



DL4000-DAS: Serial ASCII Data Interface to A-B's DF1 Protocol Send and Receive ASCII Data Packets

The DL4000-DAS is a combined ASCII data interface to Allen-Bradley's DF1 serial protocol. It provides an DC powered, freestanding, and Din Rail mountable interface for Bar Code Scanners, Printers and other ASCII devices to the CH0 port of PLC's and SLC's. It is practically helpful in interfacing devices without a built in ASCII port, such as, A-B's ControlLogix.

In Scanner operation the ASCII data is stored in the units buffer until either a terminating character (CR, LF, CR & LF) or 240 bytes are received. Once that happens the packet of ASCII data is sent to an integer file in the PLC.

In Printer operation data stored in PLC ASCII files can be outputted to Printers or message displays with a simple write command to the DL4000. [Contact us](#) for more information.

Easy Configuration

Using the supplied configuration program the DL4000-DAS is easily configured.

Serial Interfacing

DF1: Interfacing using RS232C, RS422 and RS485 with speeds upto 230.4 Kbaud

DF1: Full Duplex (Point to Point), BCC or CRC error checking

ASCII: Interfacing using RS232C, RS422 and RS485 with speeds upto 230.4 Kbaud

Physical Dimensions

Size: 1.2"H x 4.75"L x 3.2"W

(30.4 mm x 120.7 mm x 81.3 mm)

Weight: 0.45lbs (0.205 kg)

Power: DC: 9-27 VDC; Less than 2 Watts

Indicators

Green LED for power-on

Red/Green BI-Color LED's for communications

Pushbuttons

Reset and Configure/Diagnostics mode pushbuttons

Installation

Metal enclosure; Freestanding, DIN rail mounting clips, or #8 bolts

Connectors

CHA: 9-pin RS232, 4-pin RS422/RS485

CHB: 9-pin RS232, 4-pin RS422/RS485

Power: 2-pin Phoenix Euro

Environment

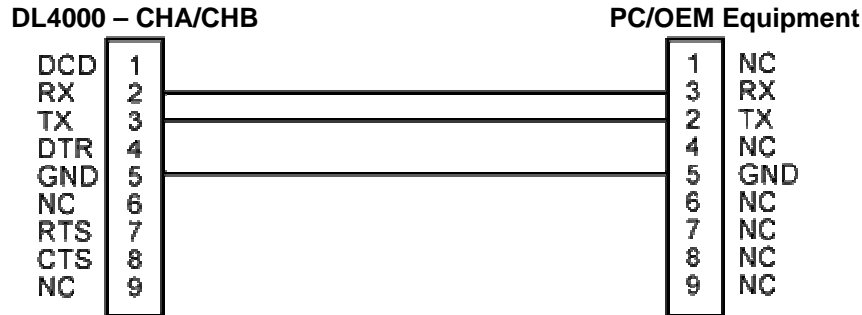
Operating: +32 F to 122 F (0 C to +50 C)

Storage: -40 F to +185 F (-40 C to +85 C)

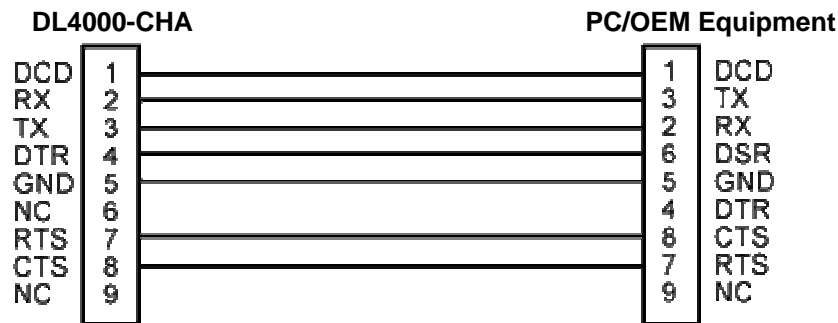
Humidity: 5% to 95% non-condensing

Wiring Diagrams:

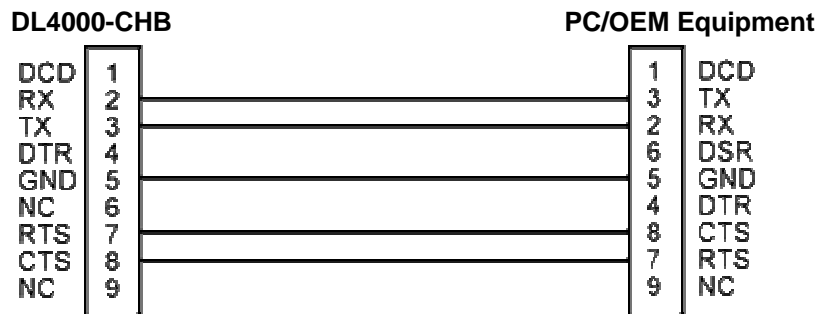
1. Configuration Cable DL4000-CHA RS-232
2. Online Cable DL4000-CHA – No Handshaking
3. Online Cable DL4000-CHB – No Handshaking



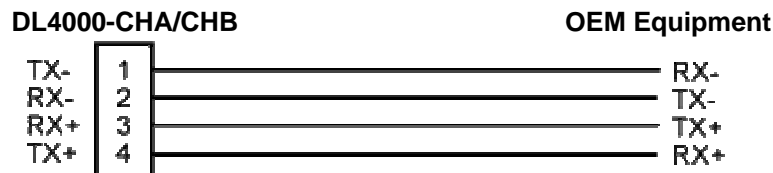
4. Online Cable DL4000-CHA RS-232C – With Handshaking



5. Online Cable DL4000-CHB RS-232 – With RTS/CTS Handshaking



6. Online Cable DL4000-CHA RS422/RS485
7. Online Cable DL4000-CHB RS422/RS485



**Note: 4 Pin Connectors are numbered from Left to Right
For RS485 Jumper Pins 1-2 and 3-4 for - and + wires**

Connection Diagram Example:

