



## **DL4000-DFX: Two Serial DF1 Devices to a PLC/SLC CH0 or other DF1 Device**

The DL4000-DFX has three communication ports. Channel A is designed to connect to a PC(MMI/HMI/RSLINX) or like device that has the DF1 protocol. Channel B and Channel C are designed to connect to PLC's, SLC's, Micrologix's, PanelView's or other equipment that uses the DF1 protocol.

### **Easy Configuration**

See attached example for configuration of the Operating Parameters for a common use of the DL4000-DFX.

### **Serial Interfacing**

CHA – RS232, RS422 and RS485 Interface to DF1 (Full Duplex) device  
CHB – RS232, RS422 and RS485 Interface to DF1 (Full Duplex) device  
CHC – RS232 Interface to DF1 (Full Duplex) device (SLC/PLC CH0)

### **Physical Dimensions**

Size: 1.2"H x 4.75"L x 3.2"W  
(30.4 mm x 120.7 mm x 81.3 mm)  
Weight: 0.45lbs (0.205 kg)  
Power: DC: 9-27 VDC; Less than 2 Watts

### **Installation**

Metal enclosure; Freestanding, DIN rail mounting clips, or #8 bolts

### **Environment**

Operating: +32 F to 122 F (0 C to +50 C)  
Storage: -40 F to +185 F (-40 C to +85 C)  
Humidity: 5% to 95% non-condensing

### **Indicators**

Green LED for power-on  
Red/Green BI-Color LED's for communications

### **Pushbuttons**

Reset and Configure/Diagnostics mode pushbuttons

### **Communications**

CHA: Full Duplex DF1, 300 b to 230.4 Kb  
CHB: Full Duplex DF1, 300 b to 230.4 Kb  
CHC: Full Duplex DF1, 300 b to 38.4 Kb

### **Connectors**

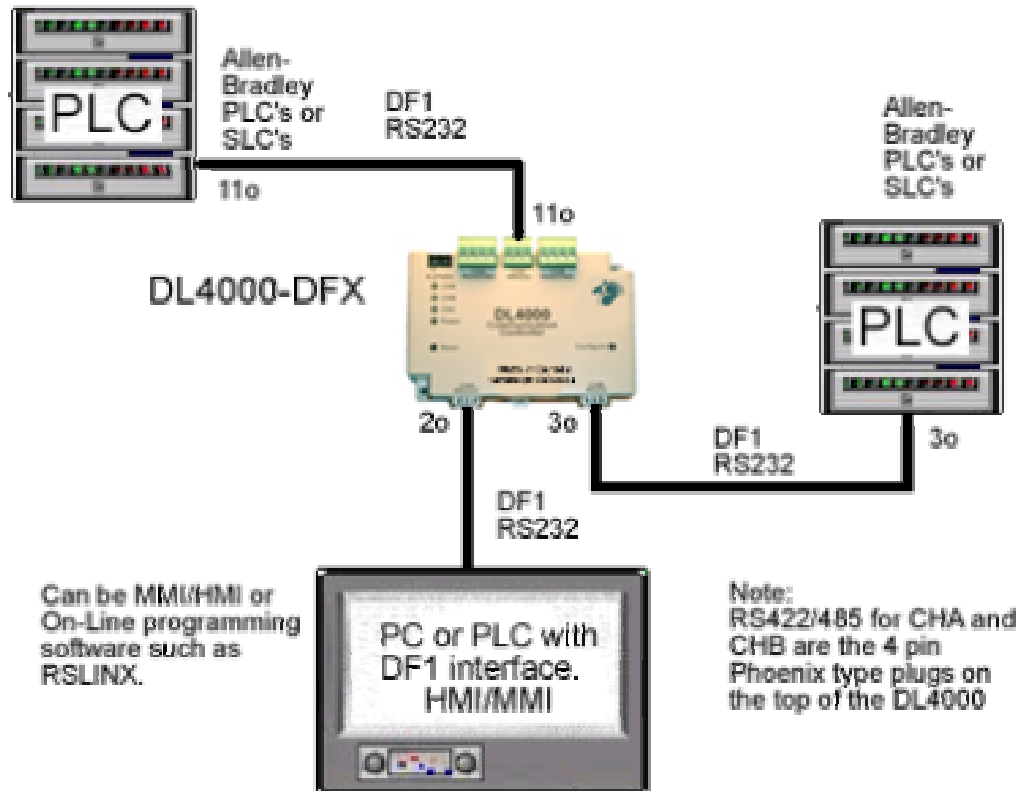
CHA: 9-pin RS232, 4-pin RS422/RS485  
CHB: 9-pin RS232, 4-pin RS422/RS485  
CHC: 3-pin Euro RS232  
Power: 2-pin Phoenix Euro



8. Online Cable DL4000-CHC RS232



Connection Diagram Example:



April 21, 2004

## **DL4000-DFX Configuration Example Using RSLINX to Communicate with a PLC via two PC's**

In this example the DL4000-DFX 's three communication ports will be setup as follows. Channel A and Channel C will be used to connect to the two PC's using RSLINX and RSLOGIX5 to go online with a PLC connected to Channel B.

DL32 V3.X is the configuration software needed to setup the channels; the latest version is available from the Equustek Solutions Inc. website at:

<http://www.equustek.com/Downloads.html>

### **General Information of the DL4000-DFX's communication Channels**

Channel A and B are full RS232-C / RS 422/RS485 channels. Channel C is only RS232 3 Wire.

The following addresses are allowed for each channel.

<b>Channel</b>	<b>Address Range (Octal)</b>
A	00-76
B	01-77
C	00-77

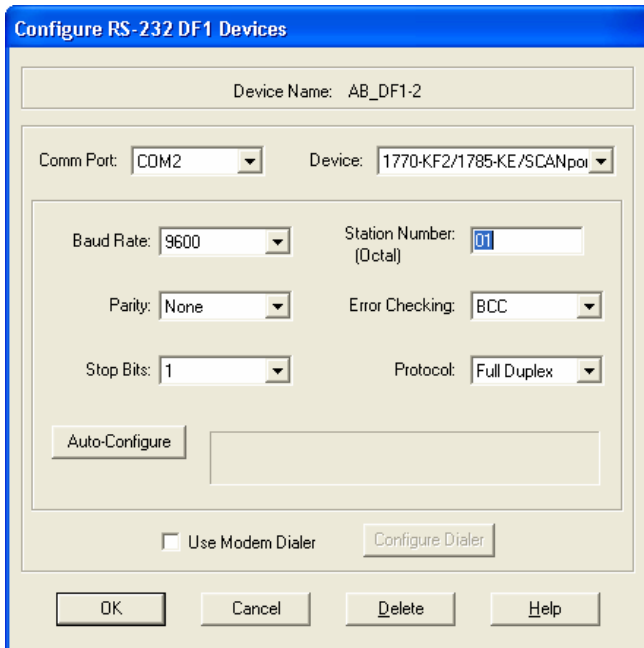
NOTE: Devices connected to each Channel MUST have the same address!

**In this example Configuration of DL4000 is as follows:**

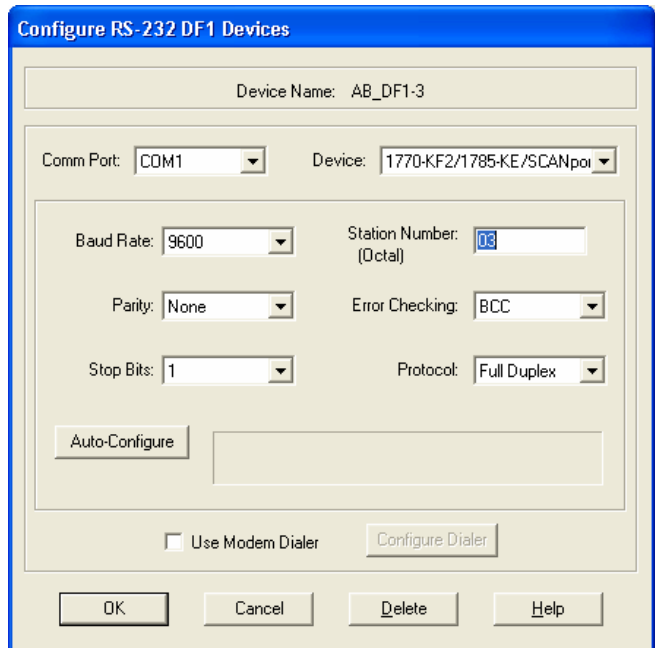
- Channel A – Address 1o - Connected to RSLINX
- Channel B– Address 2o - Connected to PLC CH0
- Channel C– Address 3o - Connected to RSLINX

Note: For RSLINX... Use the Serial DF1 Driver and then choose 1770-KF2 Device. Baud rates, Parity, Error Checking all have to match. **WHO ACTIVE DOES NOT WORK!!!**

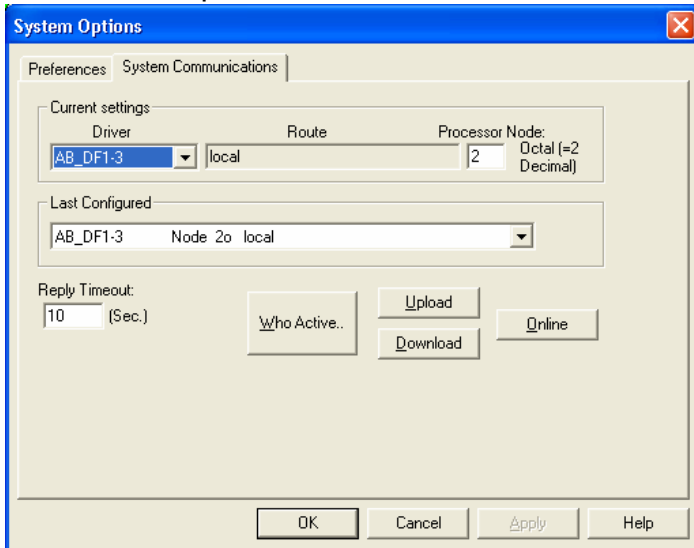
Setting For DF1 driver for Channel A



Setting for DF1 Driver Channel C



**Then Setup RSLOGIX 5 as follows:**



The Processor node is the setting for Channel B, or node 2 in this example. Both RSLOGIX5's on both PC's will have the same settings.