



DL4000-MAS: Modbus RTU Master interface for Receiving Floating Point Numbers

The DL4000-MAS is a Modbus RTU Master interface for Receiving Floating Point ASCII numbers. The DL4000-MAS receives the Floating Point ASCII number (1.2345) and will then write the data to the specified Modbus RTU slave device and Register. [Contact us](#) for more information.

Easy Configuration

Using the supplied configuration program the DL4000-MAS is easily configured.

Serial Interfacing

Modbus: Interfacing using RS232C, RS422 and RS485 with speeds upto 230.4 Kbaud

ASCII: Interfacing using RS232C, RS422 and RS485 with speeds upto 230.4 Kbaud

Physical Dimensions

Size: 1.2"H x 4.75"L x 3.2"W

(30.4 mm x 120.7 mm x 81.3 mm)

Weight: 0.45lbs (0.205 kg)

Power: DC: 9-27 VDC; Less than 2 Watts

Indicators

Green LED for power-on

Red/Green BI-Color LED's for communications

Pushbuttons

Reset and Configure/Diagnostics mode pushbuttons

Installation

Metal enclosure; Freestanding, DIN rail mounting clips, or #8 bolts

Connectors

CHA: 9-pin RS232, 4-pin RS422/RS485

CHB: 9-pin RS232, 4-pin RS422/RS485

Power: 2-pin Phoenix Euro

Environment

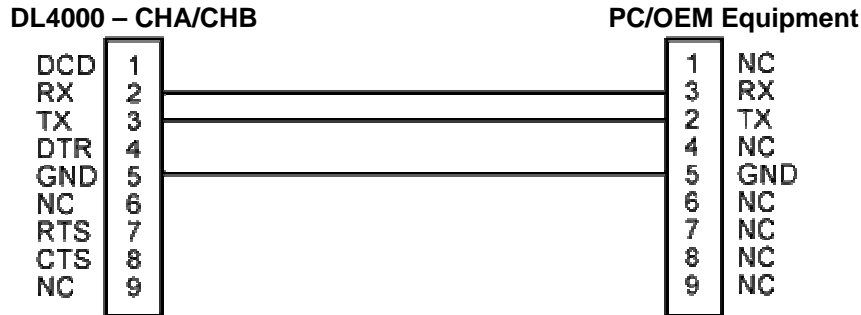
Operating: +32 F to 122 F (0 C to +50 C)

Storage: -40 F to +185 F (-40 C to +85 C)

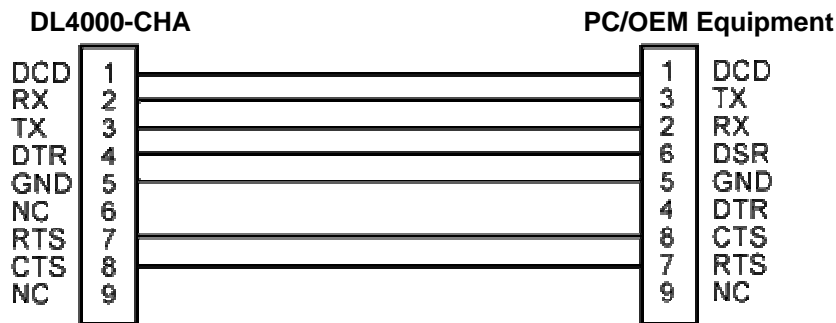
Humidity: 5% to 95% non-condensing

Wiring Diagrams:

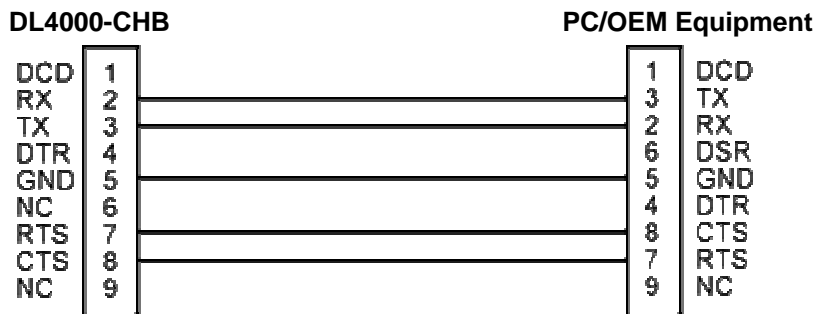
1. Configuration Cable DL4000-CHA RS-232
2. Online Cable DL4000-CHA – No Handshaking
3. Online Cable DL4000-CHB – No Handshaking



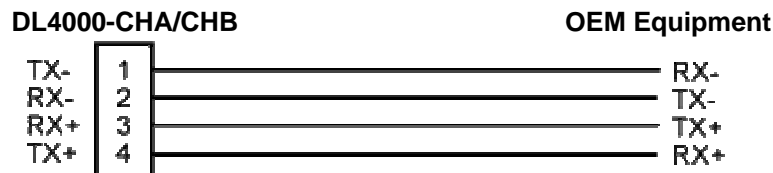
4. Online Cable DL4000-CHA RS-232C – With Handshaking



5. Online Cable DL4000-CHB RS-232 – With RTS/CTS Handshaking



6. Online Cable DL4000-CHA RS422/RS485
7. Online Cable DL4000-CHB RS422/RS485



Note: 4 Pin Connectors are numbered from Left to Right
For RS485 Jumper Pins 1-2 and 3-4 for - and + wires

Connection Diagram Example:

