



Quickstart Procedure

DLPCIE (PCIe Bus DH+/DH-485 Interface Cards)

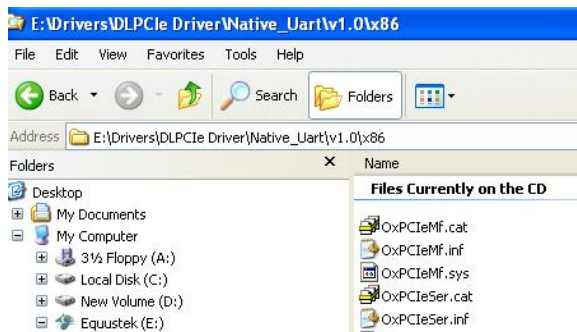
Using EQ32vX.Y for Windows VISTA/XP/2000

Please ensure that you have the Equustek Configuration CD available when installing the DLPCIE card.
Please see the DLPCIE user's manual or spec sheet for cable diagrams and more in depth greater descriptions.

Step 1 – Install DLPCIE in your PC

1. With the Power Off, insert the DLPCIE card in an available slot of your PCIe bus.
2. Replace cover and power up you PC, the DLPCIE LED's should go through the following startup sequence:
ERROR LED on for ½ second, then NETWORK LED on for ½ second, then BUS LED on for ½ second.

Step 2 – Installing the Driver on Power UP



1. New Hardware wizard should automatically detect the DLPCIE card and start-up.
2. Select Have Disk when it is looking for the (Driver) file. Browse the Equustek CD and locate the appropriate file.

Step 3 – Install and Run the EQ32 Configuration Software

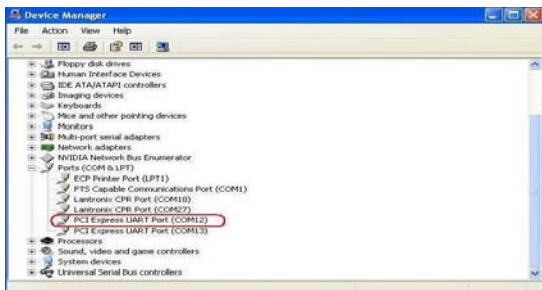


If it does not start automatically, select *Run* from the Start Menu and enter “D:\Autorun.exe” where “D” is the drive letter of your CD drive.

1. Insert the Equustek CD. The selection screen (left) should start up automatically.

2. From the selection screen, choose *Install Software* → *Install EQ32 Configuration Software* → *Install Latest EQ32 Software* to install the latest version of EQ32.
3. To run the EQ32 software, Press the *Start Button* (bottom left of screen) then select *Programs* → *Equustek Solutions Inc.* → *EQ32*.

Step 4 – Configuration Settings



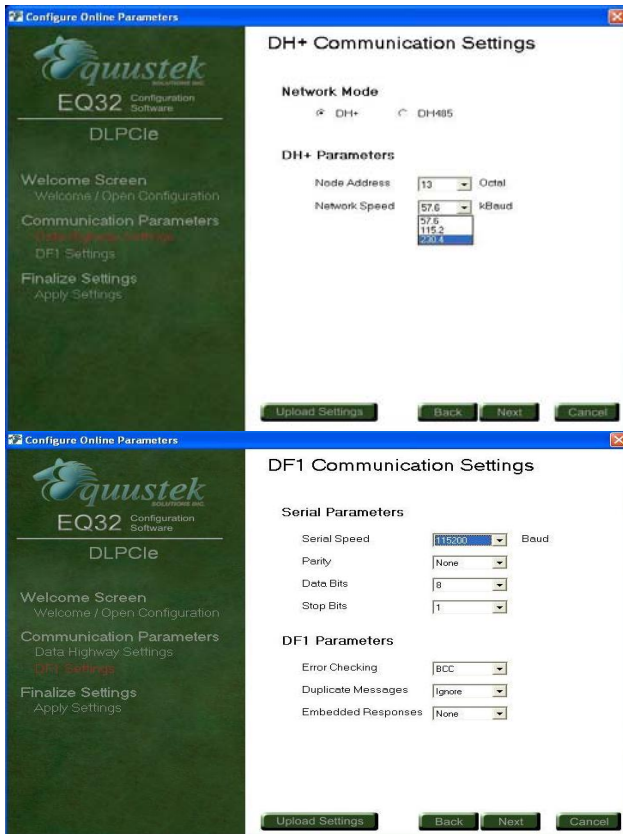
1. Before Starting the EQ32 Configuration Software, find out what COM port has been assigned to the DLPCIE. To do this, open the Device Manager (from the Control Panel, select System, then on the Hardware tab in the System Properties window, select Device Manager). Under *Ports (COM & LPT)* you will see the two COM ports assigned to the DLPCIE Use the 1st one, as the second one is the DB9 pin RS232 general purpose serial COM PORT .



2. From the EQ32 Welcome Screen, click on the *DL-PCIE* button.



3. From the EQ32 Main Menu, select the COM Port that has been assigned to the DLPCIE and then click the *Configure* button.



4. From the Configuration Menu:
 - a. Select the Network Protocol (based on the model of DLPCIE you have ordered).
 - b. Select the network parameters you want to assign to the card (Node address and the Network baud rate).
 - c. Under the DF1 Communication settings Select the DF1 Bus Protocol settings, select the error checking method and other DF1 parametres. Typical users will want to leave the settings at their default values.

5. After all of the parameters are chosen, click on next then press the *DOWNLOAD to DL* button to send the parameters to the DLPCIE. An “A-OK Parameters Transferred Successfully” will appear if the parameters were successfully downloaded. The DLPCIE will automatically reset after transferring the configuration and go online.
6. If you wish to save the configuration settings, press the *Configuration Settings* button and select *Save Configuration Settings*.
7. Select *Return to Main Menu* and the select *Exit EQ32* to exit the program. The DLPCIE is now ready for online operation.