



EQ-DCM

User Manual

Contents



INTRODUCTION.....	5
ABOUT THIS MANUAL.....	5
INTENDED AUDIENCE	5
HARDWARE SPECIFICATIONS	6
PHYSICAL SPECIFICATIONS.....	6
HARDWARE LAYOUT.....	6
OPERATING SPECIFICATIONS	6
LED OPERATION	9
POWER-UP SEQUENCE.....	9
ONLINE LED OPERATION.....	9
OFFLINE LED OPERATION.....	10
LED ERROR SEQUENCES.....	10
INSTALLATION.....	11
INSTALLING THE EQ-DCM.....	11
EQ32 SOFTWARE.....	12
OVERVIEW.....	12
INSTALLING THE SOFTWARE.....	12
STARTING THE SOFTWARE.....	12
CONFIGURE	13
UPGRADE FIRMWARE	13
DEVICE INFORMATION.....	14
OFFLINE MANAGER.....	14
CONFIGURATION.....	15
CONFIGURING THE EQ-DCM	15
OPEN A SAVED CONFIGURATION.....	15
SERIAL COMMUNICATION SETTINGS	15
<i>Baud Rate</i>	16
<i>Data Bits</i>	16
<i>Stop Bits</i>	16
<i>Parity</i>	16
<i>Handshaking</i>	16
ETHERNET COMMUNICATION SETTINGS	16
<i>DHCP</i>	16

<i>IP Address</i>	17
<i>Subnet Mask</i>	17
<i>Default Gateway</i>	17
<i>Speed</i>	17
<i>Socket Timeout</i>	17
SERIAL PROTOCOL SETTINGS	17
<i>Allan-Bradley DFI</i>	17
<i>Communication Mode</i>	18
<i>Error Detection</i>	18
<i>ASCII</i>	18
ETHERNET PROTOCOL SETTINGS	18
<i>AB Ethernet</i>	18
ROUTING TABLE SETUP	19
<i>Add Route</i>	19
<i>Source Port</i>	19
<i>Destination Address Range</i>	19
<i>Destination Port</i>	20
<i>IP Address</i>	20
<i>Edit Route</i>	20
<i>Delete Route</i>	20
<i>Clear Routing Table</i>	20
PROTOCOL CONVERSION SETTINGS	21
<i>ASCII – DFI</i>	21
<i>File Number</i>	21
<i>Element Number</i>	21
<i>File Type</i>	21
<i>Message Function</i>	21
DOWNLOADING AND SAVING SETTINGS	22

UPGRADING FIRMWARE.....23

UPGRADING FIRMWARE IN THE EQ-DCM	23
--	----

OFFLINE MANAGER.....25

OVERVIEW	25
RESTORE EEPROM TO FACTORY DEFAULTS	25
WRITE NEW FIRMWARE	26
MEMORY DUMP.....	27
DIAGNOSTICS	27
DEBUG.....	27
SHOW FIRMWARE VERSION	27
GO ONLINE.....	27

WIRING.....28

RS-232 CONNECTION	28
<i>No Handshaking</i>	28
<i>RTS/CTS Handshaking</i>	28
RS-422 CONNECTION	29
RS-485 CONNECTION	29
ETHERNET CONNECTION	30
<i>Straight Through Cable</i>	30
<i>Cross Over Cable</i>	30

TYPICAL APPLICATIONS	31
AB ETHERNET TO DF1	31

Introduction

About This Manual

This manual is designed to assist with installation and configuration of the EQ-DCM gateway device. It is recommended that this manual be read before configuring the EQ-DCM gateway device.

Intended Audience

This manual is intended for the person responsible for installing and configuring the EQ-DCM gateway. It is assumed that the person configuring the device is familiar with the protocols they will be working with and has experience configuring network devices.

Hardware Specifications

Physical Specifications

Dimensions:	1.2" H x 4.75" D x 3.2" W (30.4 x 120.7 x 81.3 mm)
Weight:	0.56 lbs (0.2 kg)
Installation:	Metal Enclosure; Desktop, #8 Bolts, or Din Rail
Operating Environment:	32 to 122°F (0 to 50°C)
Storage:	-40 to 185°F (-40 to 85°C)
Humidity:	5% to 95% non-condensing
Power:	9 – 27 Volts DC, 1.8 Watts

Hardware Layout

The EQ-DCM gateway consists of the following hardware components:

- Power Supply
- Two RS-232, RS-422, or RS-485 serial communications ports
- 10/100BaseT Ethernet Port
- Two pushbuttons (Reset and Configure)
- Seven LED's

Operating Specifications

The following section describes the operation of the EQ-DCM hardware.

Channel A (CHA)

Channel A is a serial communications port, capable of RS-232, RS-422 and RS-485 wire modes. Channel A can communicate with both the Ethernet port and Channel B. This channel can be configured for the following communication settings:

- Speeds: 2400, 9600, 19200, 38400, 57600, or 115200 Baud
- Data Bits: 7 or 8
- Parity: None, Even, or Odd
- Stop Bits: 1 or 2
- Handshaking: None or RTS/CTS flow control

This channel currently supports the DF1 Full Duplex protocol and ASCII protocol. Other protocols will be available in the future.

Channel B (CHB)

Channel B is a serial communications port, capable of RS-232, RS-422 and RS-485 wire modes. Channel B can communicate with both the Ethernet port and Channel A. This channel can be configured for the following communication settings:

- Speeds: 2400, 9600, 19200, 38400, 57600, or 115200 Baud
- Data Bits: 7 or 8
- Parity: None, Even, or Odd
- Stop Bits: 1 or 2
- Handshaking: None

This channel currently supports the DF1 Full Duplex protocol and ASCII protocol. Other protocols will be available in the future.

Ethernet 10/100BaseT

The Ethernet port can be capable of speeds of 10 or 100 Mbits/sec and uses twisted pair cables for connecting to the RJ45 port. The Ethernet port is capable of communicating with both Channel A and Channel B.

This channel currently supports the AB Ethernet protocol. Other protocols will be available in the future.

The EQ-DCM is limited to a maximum of 15 simultaneous TCP connections.

LED's

The EQ-DCM has seven LED's located on the top of the device. Four LED's on the left and three LED's on the right. Below is a list of the LED's.

Left Side LED's

- CHA
- CHB
- Diagnostic
- Power

Right Side LED's

- ETH/Rx
- ETH/Tx
- Link

Pushbuttons

The EQ-DCM has two pushbuttons: Reset and Configure. The description of each is located below.

Reset

The reset button is located on the left side of the EQ-DCM and is used to perform a hardware reset.

Configure

The configure button is located on the right side of the EQ-DCM and is used to put the EQ-DCM into its Offline operating mode.

LED Operation

Power-Up Sequence

When the EQ-DCM powers up, it performs a self diagnostic check to ensure that everything is working properly. During power-up, the LED's will blink in a specific sequence and then start its online operation. Below is the LED power-up sequence.

CHA: Green
↓
CHB: Green
↓
Diagnostic: Green
↓
CHA, CHB, Diagnostic: Green

After the power-up sequence has completed the EQ-DCM will be online.

Online LED Operation

When the EQ-DCM is in its online operation, the LED's will perform as shown in the table below.

LED	Description
CHA: Green	CHA is transmitting and/or receiving data packets.
CHA: Red	CHA received a bad data packet or transmitted a NAK.
CHB: Green	CHB is transmitting and/or receiving data packets.
CHB: Red	CHB received a bad data packet or transmitted a NAK.
Diagnostic: Off	The diagnostic led should never be on in online operation unless a hardware error has occurred.
ETH/Rx: Green	Blinks when data packets are received.
ETH/Tx: Green	Blinks when data packets are transmitted.
Link: Green	Ethernet port is connected
Link: Off	Ethernet port is not connected

Offline LED Operation

When the *Configure* button on the EQ-DCM is pressed, the device is put into its offline mode. For more information about the offline mode, see the chapter regarding the Offline Manager. The following table shows the possible LED sequences for offline operation.

LED Sequence	Description
CHA and CHB: Red Diagnostic GREEN	Configure Mode
CHA, CHB, and Diagnostic: Green	Debug mode

LED Error Sequences

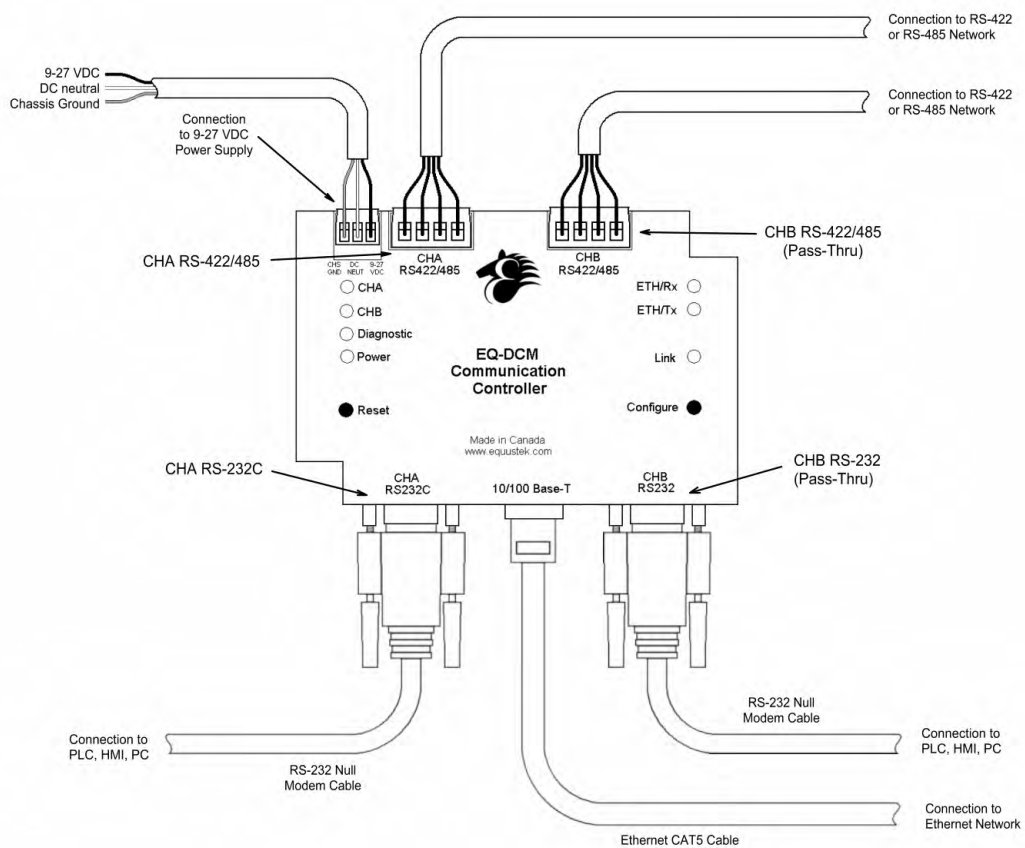
When the EQ-DCM self diagnostic check encounters a problem, the LED's will blink in a particular sequence depending on the error that occurred. Below is a table that outlines the possible errors and their LED sequence.

LED Sequence	Error	Description
Diagnostic: Solid Red CHA and CHB: Blinks Green 1x	Data Bus	An error has occurred with the data bus. Contact technical support for assistance.
Diagnostic: Solid Red CHA and CHB: Blinks Green 2x	Address Bus	An error has occurred with the address bus. Contact technical support for assistance.
Diagnostic: Solid Red CHA and CHB: Blinks Green 3x	RAM	A problem has occurred with the RAM and will need to be replaced. Contact technical support for assistance.
Diagnostic: Solid Red CHA and CHB: Blinks Green 4x	UART	A problem has occurred with one of the UART's Tx, Rx, CTS, or RTS lines. Contact technical support for assistance.
Diagnostic, CHA, and CHB: Blinks Green and Red	Firmware	The model of EQ-DCM does not support the installed firmware. Contact technical support to obtain the correct firmware.

Installation

Installing the EQ-DCM

The diagram below shows the connections for installing the EQ-DCM. Note that it is not possible to have both the RS-232 and RS-422/485 connected at the same time for CHA and CHB.



EQ32 Software

Overview

The EQ32 Configuration Software is used to configure the EQ-DCM online operating parameters and upgrade the firmware. The software can also be used to view the serial number, model number, hardware number, and version of firmware in the EQ-DCM. The following section explains how to use the EQ32 Configuration Software with the EQ-DCM gateway.

Installing the Software

The EQ32 Configuration Software must be installed on a PC before using the software.

Starting the Software

The EQ32 Configuration Software is located by default under the **Programs Menu** in the **Equustek Solutions Inc.** folder.

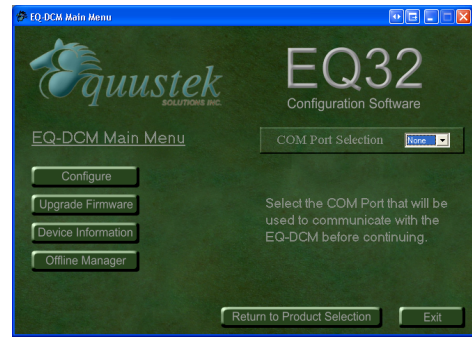
Start → Programs → Equustek Solutions Inc. → EQ32

Once the program has been started, the Product Selection screen will appear. From this screen, select the product that you wish to configure or upgrade.



After selecting the EQ-DCM from the product menu, the EQ-DCM Main Menu will appear. From this screen, choose one of the four options available.

- Configure
- Upgrade Firmware
- Device Information
- Offline Manager



Each of the options listed are explained in the following sections.

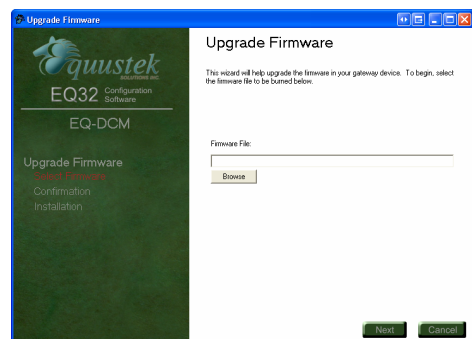
Configure

The *Configure* option is used to configure the online operating parameters of the EQ-DCM. These options include serial parameters, protocol parameters, IP address, and routing tables. For more information about configuring the EQ-DCM, see the chapter dedicated to configuring the EQ-DCM.



Upgrade Firmware

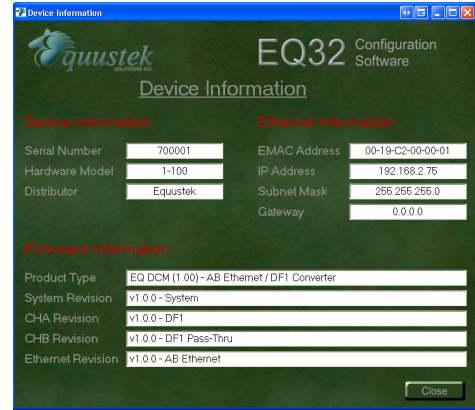
The *Upgrade Firmware* option is used to install firmware to the EQ-DCM. When new firmware upgrades are available, use this option to install the firmware. For more information about upgrading the firmware in the EQ-DCM, see the chapter dedicated to upgrading the firmware in the EQ-DCM.



Device Information

The *Device Information* option is used to view information about the EQ DCM gateway device. The information shown here will be needed if you call for technical support. Below is a list of the information that is displayed when selecting the Device Information option.

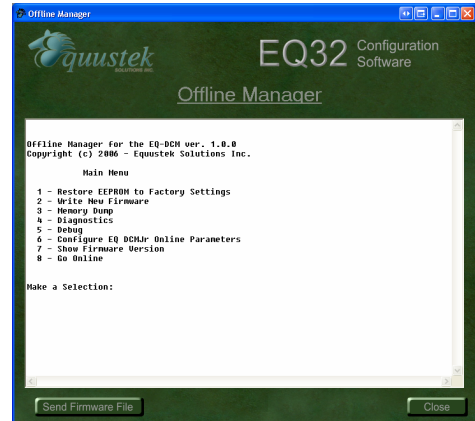
- Serial Number
- Hardware Model
- Distributor
- EMAC Address
- IP Address
- Subnet Mask
- Gateway IP Address
- Firmware Information



Offline Manager

The *Offline Manager* option is used to access the OFFLINE Manager and offline options available on the EQ-DCM. The OFFLINE Manager for the EQ-DCM can also be accessed by opening a Hyper Terminal window with the following communication settings.

- Bits Per Second: 38400 bps
- Data Bits: 8
- Stop Bits: 1
- Parity: None
- Handshaking: Xon/Xoff



For more information regarding the EQ-DCM Offline Manager, see the chapter dedicated to the Offline Manager.

Configuration

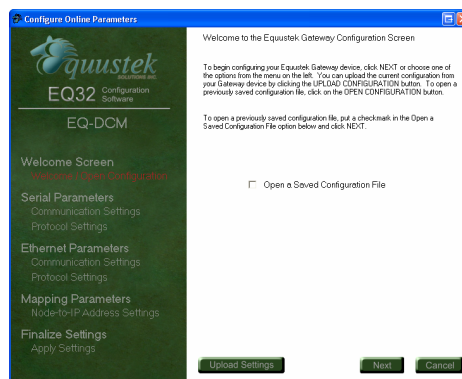
Configuring the EQ-DCM

Before using the EQ-DCM, the online operating parameters must be configured. These parameters include serial parameters, protocols and protocol parameters, Ethernet parameters (such as IP address), and routing tables. Use the EQ32 Configuration Software to configure the EQ-DCM. The following sections explain the available options.

Open a Saved Configuration

When the Configure option is selected from the EQ32 main menu, the first screen will give the option to open a saved configuration file. To open a saved configuration file, put a check beside the *Open a Saved Configuration File* option.

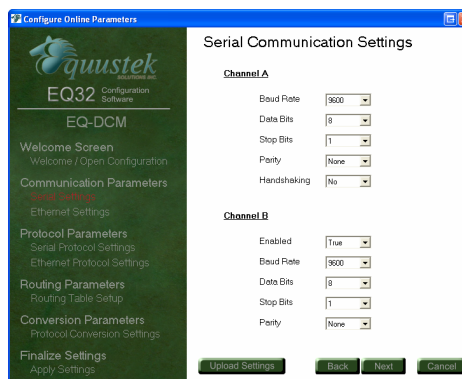
The current configuration that is stored in the EQ-DCM can be uploaded by pressing the configure button on the EQ-DCM and then clicking the *Upload Settings* button.



Serial Communication Settings

The Serial Communication Settings are used to setup CHA and CHB serial parameters for communicating with a PLC, HMI, or other serial devices. The available options are listed and explained below.

- Baud Rate
- Data Bits
- Stop Bits
- Parity
- Handshaking



Baud Rate

CHA and CHB can be configured for the following baud rates: 2400, 4800, 9600, 19200, 38400, 57600, and 115200 bps. The default setting is 9600 bps.

Data Bits

CHA and CHB can be configured for either 7 or 8 data bits. The default setting is 8 data bits.

Stop Bits

CHA and CHB can be configured for either 1 or 2 stop bits. The default setting is 1 stop bit.

Parity

CHA and CHB can be configured for even parity, odd parity, or no parity. The default setting is no parity.

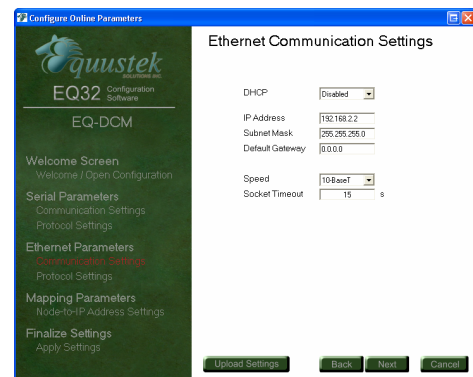
Handshaking

CHA can be configured to use RTS/CTS handshaking or no handshaking. CHB can only be configured for no handshaking. The default setting is no handshaking.

Ethernet Communication Settings

The Ethernet Communication Settings is where the IP address, subnet mask, and default gateway are configured. Below is a list of settings that can be adjusted.

- DHCP
- IP Address
- Subnet Mask
- Default Gateway
- Speed
- Socket Timeout



DHCP

The DHCP option can be used to have the DHCP server automatically assign an IP address to the EQ-DCM.

IP Address

The IP address is used to identify the EQ-DCM on the network. The default IP address is 192.168.2.2.

Subnet Mask

The subnet mask is used to separate the network address from host address. The default subnet mask is 255.255.255.0.

Default Gateway

The default gateway is the IP address of the gateway that connects the local area network to the internet. This value can be left blank. The default value for the gateway is 192.168.2.1.

Speed

The EQ-DCM can be configured to have the Ethernet connection operate at 10 Mbits/s or 100 Mbits/s. The default setting is 10 Mbits/s.

Socket Timeout

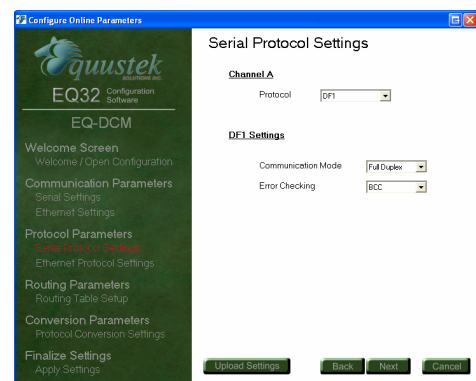
The socket Timeout is the length of time a socket will remain open while there is no activity. The default value is 30 seconds.

Serial Protocol Settings

Currently, the EQ-DCM supports Allan-Bradley's DF1 protocol and the ASCII protocol. After choosing the protocol, the available options for that protocol will be displayed.

Currently available serial protocols are listed below.

- Allan-Bradley DF1
- ASCII



Allan-Bradley DF1

The DF1 protocol is a serial protocol developed by Allan-Bradley for communicating with PLC's, HMI's, and other DF1 capable devices. The currently available options are as follows:

Communication Mode

Currently only the *Full Duplex* mode is available. The *Half duplex* mode will be available in the near future.

Error Detection

There are two methods of error detection available for the DF1 protocol, BCC and CRC error checking.

ASCII

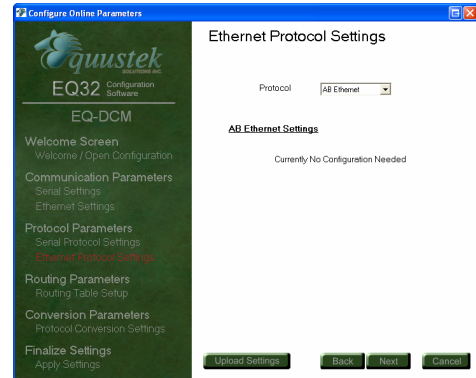
The ASCII protocol is a serial protocol used to communicate with scanners, printers, and other ASCII devices. There is no protocol setup needed for the ASCII protocol. The EQ-DCM will continue to receive data until a carriage return is received.

Ethernet Protocol Settings

Currently only Allan-Bradley's AB Ethernet protocol is available. After choosing the protocol, the available options for that protocol will be displayed.

Currently available protocols are listed below.

- AB Ethernet



AB Ethernet

AB Ethernet (or CSP as it is referred to by Allan-Bradley) is an Ethernet protocol developed by Allan-Bradley for communicating with PLC's, HMI's, and other AB Ethernet capable devices. There is currently no protocol setup needed for the AB Ethernet protocol.

Routing Table Setup

The routing table is a feature used by the EQ-DCM to determine where incoming message requests are to be routed. Messages can be routed to either of the serial ports or to the Ethernet port. When the EQ-DCM searches through its routing table, it will use the first table entry that matches the criteria in the incoming message. Because of this, the order in which the data is entered is important. The routing table can support up to a maximum of 20 routes.

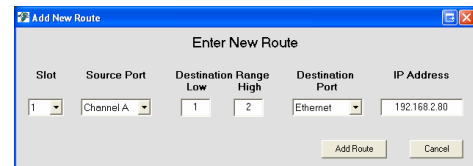
To define a route in the table, the following information is needs to be entered.

- Source Port
- Destination Address Range
- Destination Port



Add Route

The *Add Route* button is used to create a new route in the routing table. When adding new routes, the slot number automatically defaults to the next available slot in the routing table. If multiple routes are present, the slot number can be changed to insert a new route between existing entries.



Source Port

The source port is the port where incoming message requests will be received.

Destination Address Range

The destination address range is used to determine where messages need to be routed. The address range can be a single value or a range of values. In order to select a single address, enter the same value for both the *low* and *high* addresses. Any messages that fall into the defined range will be routed to the appropriate destination port. Messages that are received and do not fall within the defined range are discarded.

When messages are received from the Ethernet port, the remote destination value is examined to see if the message falls within the defined range in the routing table.

The allowed values for the destination range are 0 to 255.

Destination Port

The destination port is the port that messages will be routed to if they meet the criteria defined in the routing table.

IP Address

The IP address is only used if the Ethernet port is entered as the destination port. The IP address is the address of the Ethernet device that messages will be sent to.

Edit Route

The *Edit Route* button is used to edit an existing route. When the slot of the route to be edited is selected, the information about that entry is displayed and can be changed.

Delete Route

The *Delete Route* button is used to remove a single entry from the table.

Clear Routing Table

The *Clear Routing Table* button is used to remove all of the entries from the routing table.

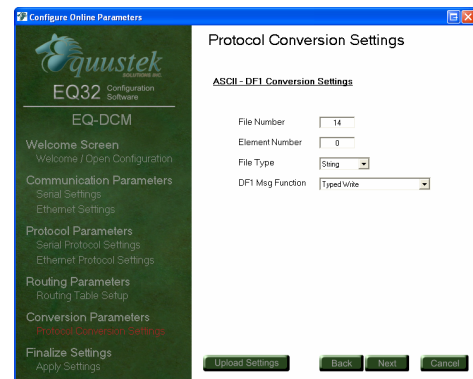
Protocol Conversion Settings

When communicating to devices that use different protocols, it is sometimes necessary to setup protocol conversion parameters. These conversion parameters are in addition to the protocol setup of each port. Below is an explanation of conversion parameters for converting between certain protocols.

ASCII – DF1

When converting between ASCII and DF1, the following conversion parameters are needed for proper communication. When data is received from the port that is configured for the ASCII protocol, the *low address* defined in the *destination address range* of the routing table will be used as the destination byte when formatting the DF1 message. The following are the conversion parameters required for converting between ASCII and DF1.

- File Number
- Element Number
- File Type
- Message Function



File Number

This is the file number that ASCII data will be sent to.

Element Number

This is the element number for the specified file number that ASCII data will be sent to.

File Type

The file type identifies the type of data file that ASCII data will be sent to. The available file types are listed below.

- Integer
- String

Message Function

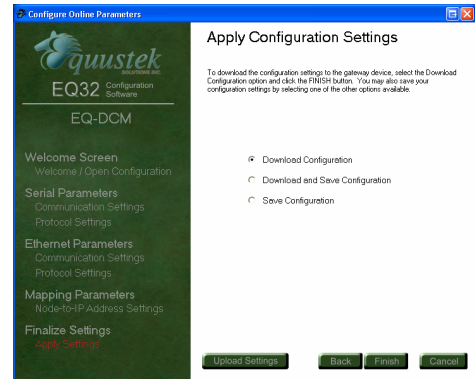
The message function defines the type of DF1 message that will be formatted. The available functions are listed below.

- Typed Write
- Protected Typed Logical Write

Downloading and Saving Settings

After the settings have been configured, the last step is to download or save them. The three options available are listed below.

- Download Configuration
- Download and Save Configuration
- Save Configuration

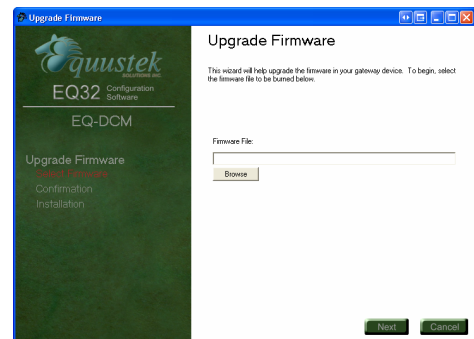


Upgrading Firmware

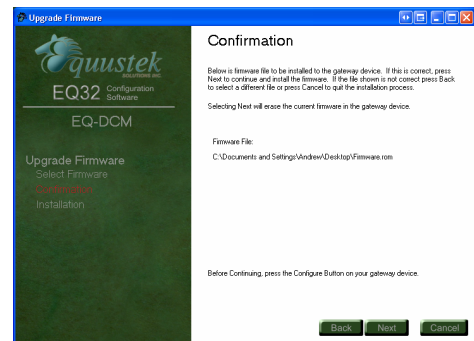
Upgrading Firmware in the EQ-DCM

When new firmware updates are available for the EQ-DCM, the firmware can be installed by using the Upgrade Firmware Option from the main menu in the EQ32 Configuration software. The following steps show how to upgrade the firmware in the EQ-DCM.

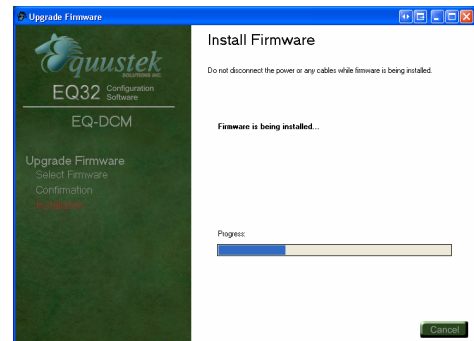
1. After choosing the Upgrade Firmware option from the main menu, you will be prompted for the firmware file (the firmware file will have a .rom extension). Choose the firmware file by clicking the *Browse* button or entering the path of the file. Click *Next* to continue.



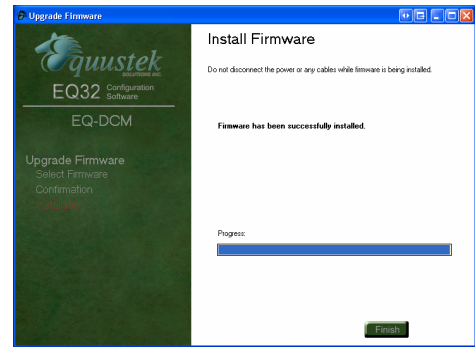
2. The next screen will ask you to confirm the file that has been chosen. If the file chosen is correct, click *Next* to start the installation process.



3. While the firmware is being installed, a progress bar will show how far along the installation is.



4. After the firmware has been downloaded and installed, a message will appear showing the status of the upgrade.



Offline Manager

Overview

The Offline Manager is an offline utility program that is started when the Configure button on the EQ DCM is pressed. This utility program allows a user access to the offline options for the EQ DCM such as upgrading firmware and running offline diagnostics. The list of available options is listed below.

1. Restore EEPROM to factory defaults
2. Write New Firmware
3. Memory Dump
4. Diagnostics
5. Debug
6. Show Firmware
7. Go Online

The OFFLINE Manager can be accessed by using the Offline Manager in the EQ32 Configuration Software or by starting a hyper terminal session in Windows. If the hyper terminal is going to be used, then configure the port settings as shown below.

- Bits per second: 38400 bps
- Data Bits: 8
- Parity: None
- Stop Bits: 1
- Flow Control: Xon/Xoff

The OFFLINE Manager should only be used by those who understand what they are doing or have been instructed to by a trained individual.

Restore EEPROM to Factory Defaults

The *Restore EEPROM to Factory Defaults* option will erase all the parameters that were configured using the EQ32 Configuration Software and return them to the factory default settings. The factory defaults for EQ DCM are as follows. *Note that these defaults may be different depending on the version of BIOS that is currently installed in your gateway device.*

CHA and CHB serial Settings

- Baud Rate: 9600 bps
- Data Bits: 8
- Parity: None
- Stop Bits: 1
- Handshaking: None

Note: Handshaking is only available for CHA

Serial Protocol Settings

Protocol: DF1
Communication Mode: Full-Duplex
Error Checking: BCC
CHB Enabled: Disabled

Ethernet Settings

DHCP: Disabled
IP Address: 192.168.2.2
Subnet Mask: 255.255.255.0
Gateway: 0.0.0.0
Speed: 10 Mbits/s
Socket Timeout: 15 seconds

Ethernet Protocol Settings

Protocol: AB Ethernet
Message Timeout: 6000 ms

All units are shipped with the factory default settings.

Write New Firmware

The *Write New Firmware* option is used to upgrade the firmware in the EQ DCM. When new firmware upgrades become available, use this option to install the firmware. After selecting this option, the user will be notified by the following message.

This will erase the system code. Do you want to proceed (Y/N)?

Press Y to proceed with the upgrade and erase the current system code. The Offline Manager will then erase the Flash Memory and ask for the new firmware file.

Erasing Flash
Send flash file now

After installing the firmware, the following message will appear to alert the user that the firmware has been successfully installed.

*** Flash Burn Successful ***

If a problem occurs while installing the firmware, the following message will appear.

*** ERROR ***
Flash Burn Failed

If the firmware fails to install, repeat the process mentioned above. If the problem persists, then contact technical support for help.

Memory Dump

The *Memory Dump* option is used to display the contents of the data stored in the memory of the EQ DCM. This option should only be used by trained individuals or if instructed to by technical support staff at Equustek Solutions, Inc.

Diagnostics

The *Diagnostics* option runs a series of tests to ensure the proper operation of the EQ DCM hardware. Below is a list of the diagnostics that are performed.

- Data Bus
- Address Bus
- RAM
- EEPROM
- UART

The Diagnostics should only be run by a trained individual or if instructed to by technical support staff at Equustek Solutions, Inc.

Debug

The *Debug* option allows direct read/write access to the EEPROM. This option is used to debug problems and check hardware configuration. The Debug option should only be used by a trained individual or if instructed to by technical support staff at Equustek Solutions, Inc.

Show Firmware Version

The *Show Firmware Version* option displays the current firmware information that is installed in the EQ DCM. This option can be used to check if the firmware in the EQ DCM is up to date.

Go Online

The *Go Online* option performs a software reset and puts the unit into its normal online operation.

Wiring

RS-232 Connection



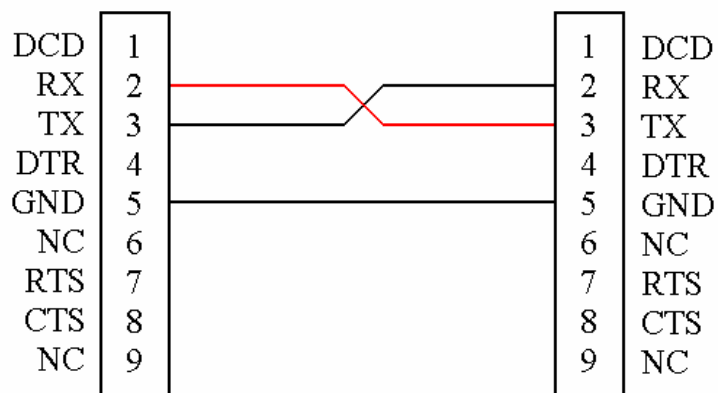
The diagrams below show the RS-232 wiring for different configurations.

No Handshaking

Both CHA and CHB can be configured for no handshaking.

EQ-DCM RS-232 Port

PC/OEM Equipment

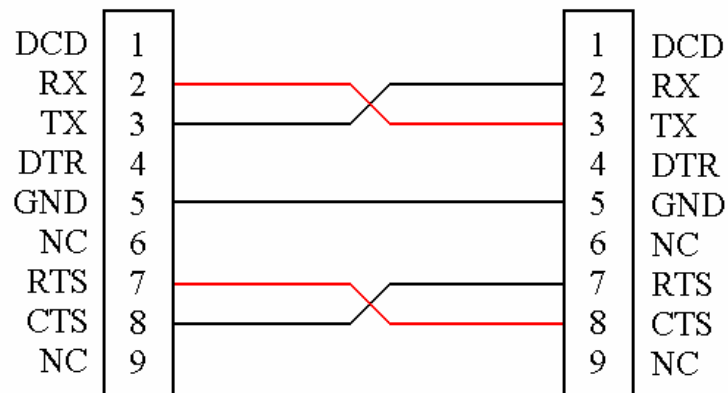


RTS/CTS Handshaking

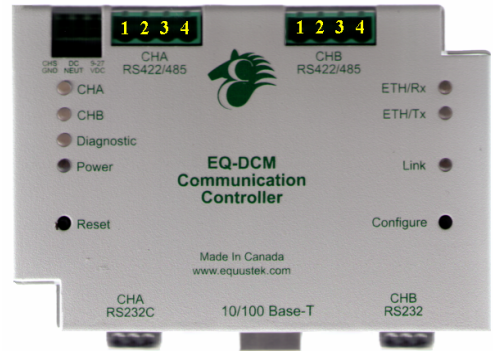
Only CHA can be configured for RTS/CTS handshaking.

EQ-DCM RS-232 Port

PC/OEM Equipment



The diagram of the EQ-DCM to the Right shows the pin numbering for the RS-422 and RS-485 connections for CHA and CHB.



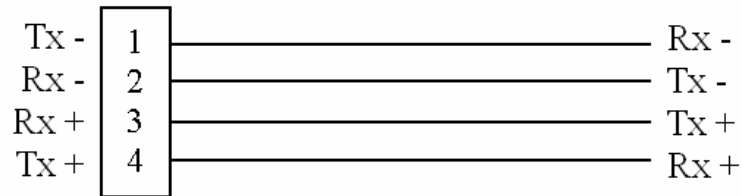
RS-422 Connection



The diagrams below show the RS-422 wiring for different configurations.

**EQ-DCM
4 pin Connector**

OEM Equipment



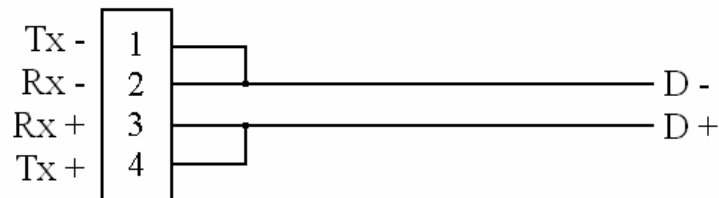
RS-485 Connection



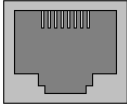
The diagrams below show the RS-485 wiring for different configurations.

**EQ-DCM
4 pin Connector**

OEM Equipment



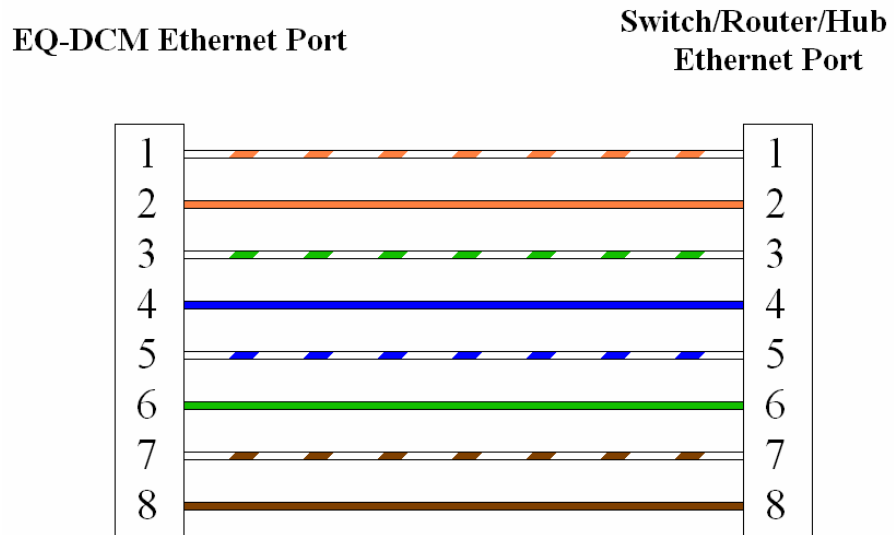
Ethernet Connection



The diagrams below show the Ethernet wiring for *straight through* and *cross over* Ethernet cables. When looking at the RJ-45 jack, as shown to the left, pin 1 is the leftmost pin.

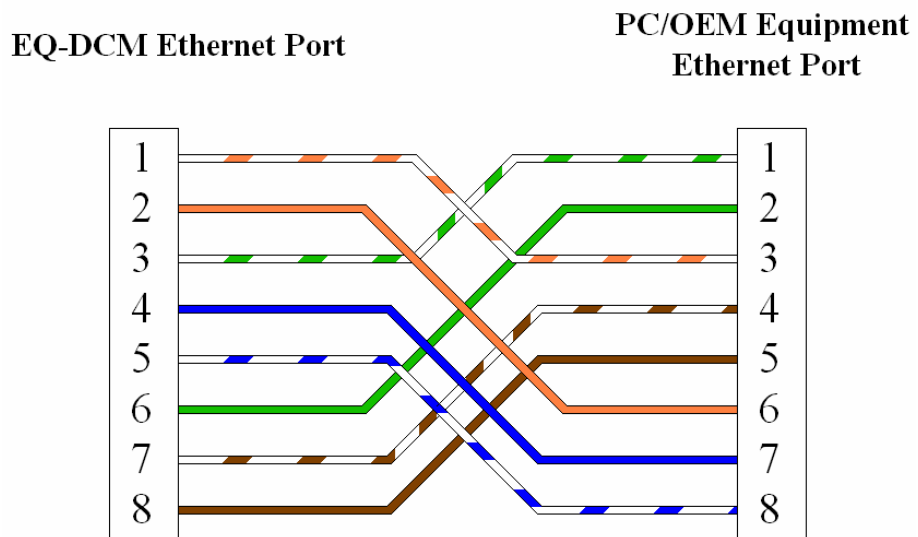
Straight Through Cable

The straight through cable is used when connecting the EQ-DCM to a switch, router, or hub.



Cross Over Cable

The cross over cable is used when connecting the EQ-DCM to a PC or other equipment without going through a switch, router, or hub.



Typical Applications

AB Ethernet to DF1

