



## **DL4000-MMX: Modbus MASTER RTU Serial to Modbus SLAVE ASCII Interface**

The DL4000-MMX allows for Modbus Master RTU devices to communicate to multiple Modbus Slave ASCII Devices. This will allow a Modbus RTU (Master) to communicate with multiple Modbus ASCII Slaves.

### **Easy Configuration**

See attached [app note](#) for configuration of the Operating Parameters

### **Serial Interfacing**

CHA - RS232, RS422 and RS485 Interface to Modbus RTU

CHB - RS232, RS422 and RS485 Interface to Modbus ASCII

### **Physical Dimensions**

Size: 1.2"H x 4.75"L x 3.2"W  
(30.4 mm x 120.7 mm x 81.3 mm)

Weight: 0.45lbs (0.205 kg)

Power: DC: 9-27 VDC; Less than 2 Watts

### **Installation**

Metal enclosure; Freestanding, DIN rail

mounting clips, or #8 bolts

### **Environment**

Operating: +32 F to 122 F (0 C to +50 C)

Storage: -40 F to +185 F (-40 C to +85 C)

Humidity: 5% to 95% non-condensing

### **Indicators**

Green LED for power-on

Red/Green BI-Color LED's for communications

### **Pushbuttons**

Reset and Configure/Diagnostics mode pushbuttons

### **Communications**

CHA: Modbus RTU, 300 baud to 230.4 Kbaud

CHB: Modbus ASCII, 300 baud to 230.4 Kbaud

### **Connectors**

CHA: 9-pin RS232, 4-pin RS422/RS485

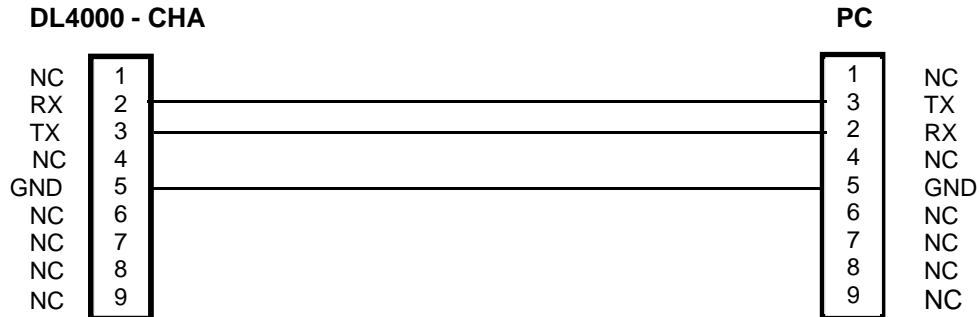
CHB: 9-pin RS232, 4-pin RS422/RS485

Power: 2-pin Phoenix Euro

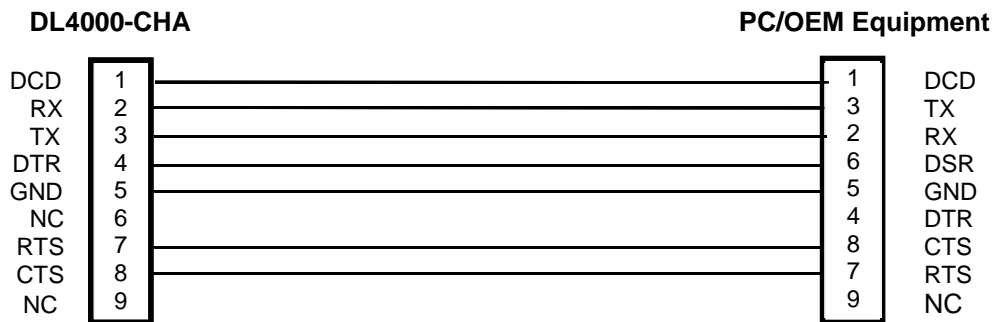


**Wiring Diagrams:**

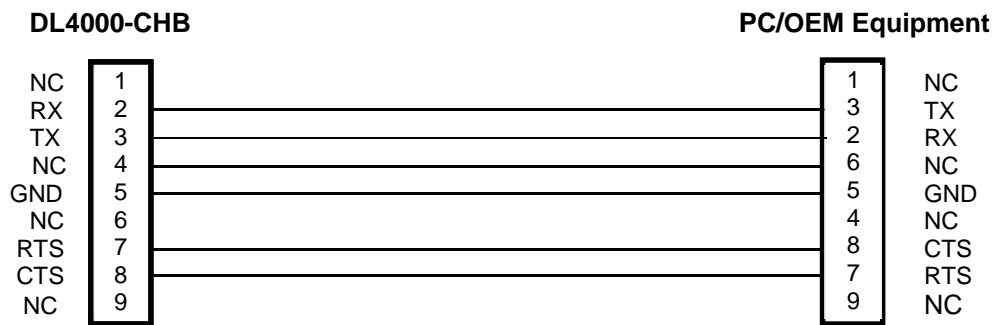
1. Configuration Cable DL4000-CHA RS-232
2. Online Cable DL4000-CHA – No Handshaking
3. Online Cable DL4000-CHB – No Handshaking



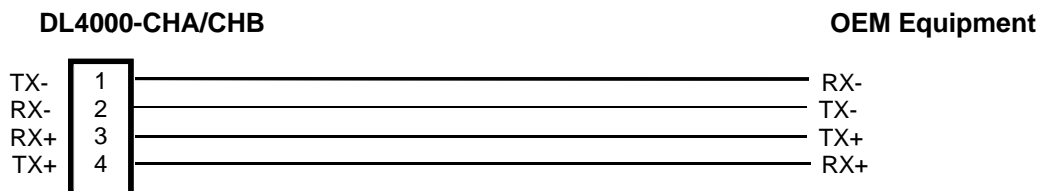
**4. Online Cable DL4000-CHA RS-232C – With Handshaking**



**5. Online Cable DL4000-CHB RS-232 – With RTS/CTS Handshaking**



**6. Online Cable DL4000-CHA/CHB RS422/RS485**



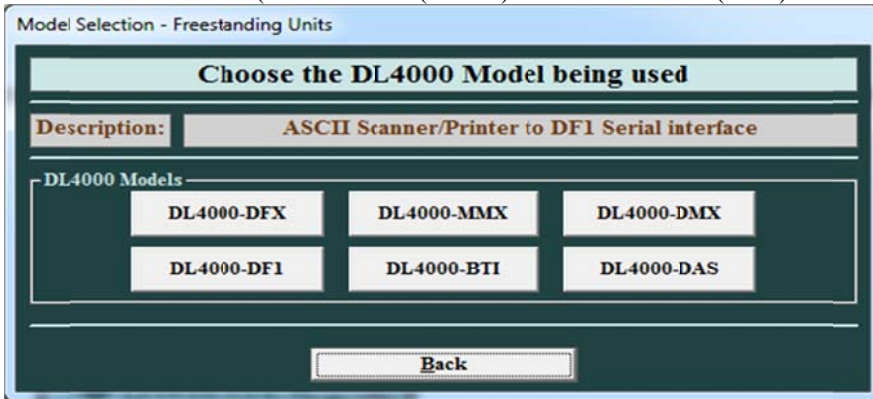
## Configuration Software for the DL4000-MMX

After installing the DL32 software and Running the Application the following screens will appear.

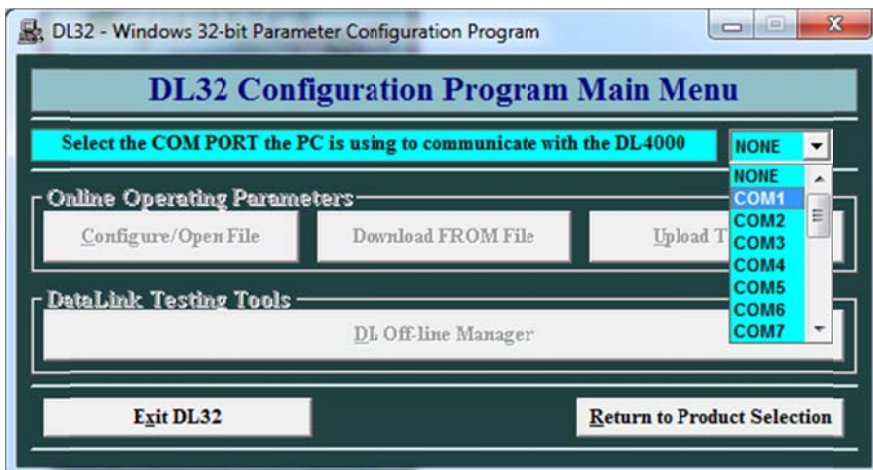
1. Select DL4000-ALL MODELS



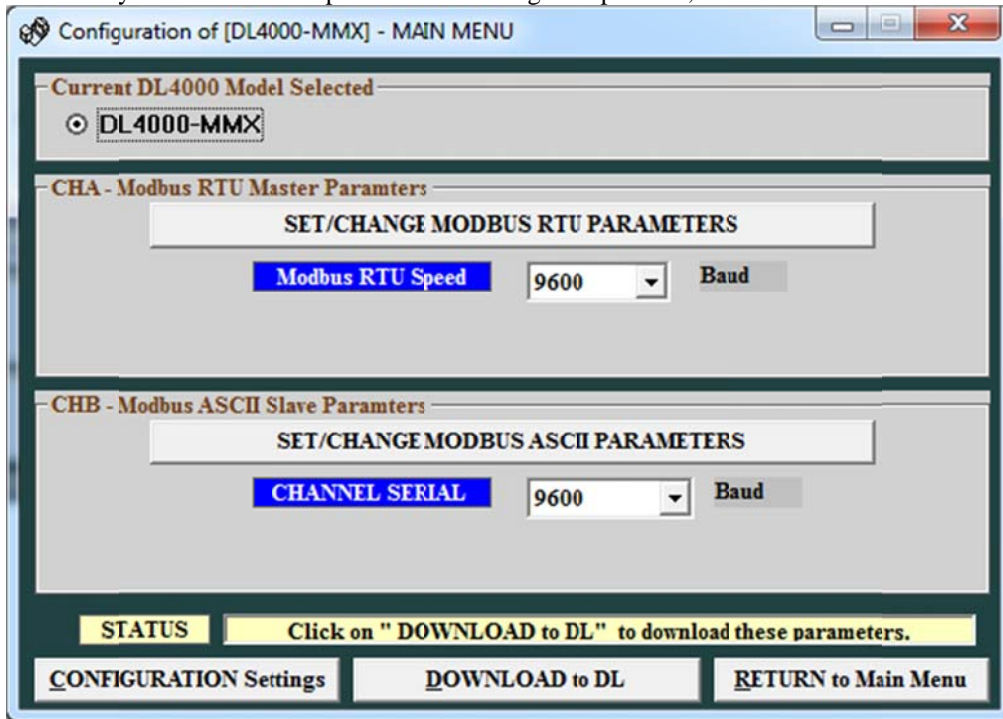
2. Select DL4000-MMX (Modbus RTU (Master) to Modbus ASCII (slave) converter)



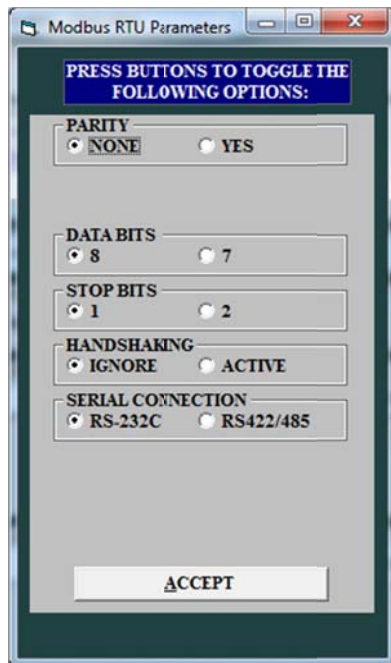
3. Select the COM PORT used to communicate with the DL4000



4. After your select the comport click on Configure Open File, then c



5. Set up the CHA – Modbus RTU Parameters



6. Set up the CHB – Modbus ASCII Parameters.



Modbus ASCII Parameters

PRESS BUTTONS TO TOGGLE THE FOLLOWING OPTIONS:

PARITY  
 NONE  YES

DATA BITS  
 8  7

STOP BITS  
 1  2

HANDSHAKING  
 IGNORE  ACTIVE

SERIAL CONNECTION  
 RS-232C  RS422/485

ACCEPT

7. Click on Download to DL.

