



Quickstart Procedure

DLPCIE (PCIe Bus DH+/DH-485 Interface Cards)

Using EQ32 for Win Server8, Win7, WinXP&Win2K

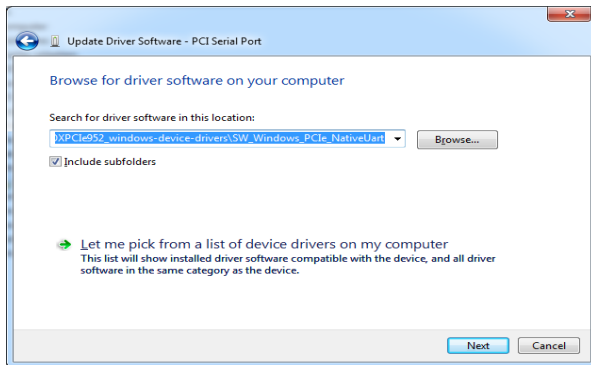
Please ensure that you have the Equustek Configuration CD available when installing the DLPCIE card.

Please see the DLPCIE user's manual or spec sheet for cable diagrams and more in depth greater descriptions.

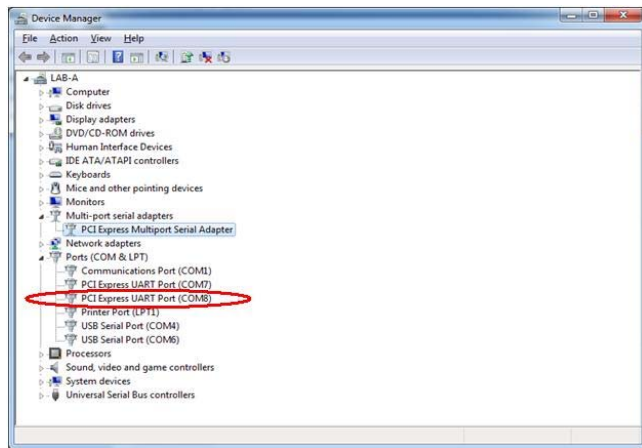
Step 1 – Install DLPCIE in your PC

1. With the Power Off, insert the DLPCIE card in an available slot of your PCI Express bus.
2. Replace cover and power up you PC, the DLPCIE LED's should go through the following startup sequence:
ERROR LED on for ½ second, then NETWORK LED on for ½ second, then BUS LED on for ½ second.

Step 2 – Installing the Driver on Power UP



1. Add New Hardware wizard should automatically detect the DLPCIE card and start-up.
2. Select Have Disk when it is looking for the (Driver) file. Browse the Equustek CD and locate the appropriate file (PCIe NativeUart folder. In this example shows it for Windows 7.



- 3- After driver installation successful, under Device Manager Ports and LPTs you should see two serial ports for the DLPCIE card, one of them is used to setup the RS232DF1 driver and the second one is for general RS232 serial port use.
- 4- Use the 1st serial port for your RS232 DF1 driver is you are using windows XP and use the second one if you are using Windows7.

Step 3 – Install and Run the EQ32 Configuration Software



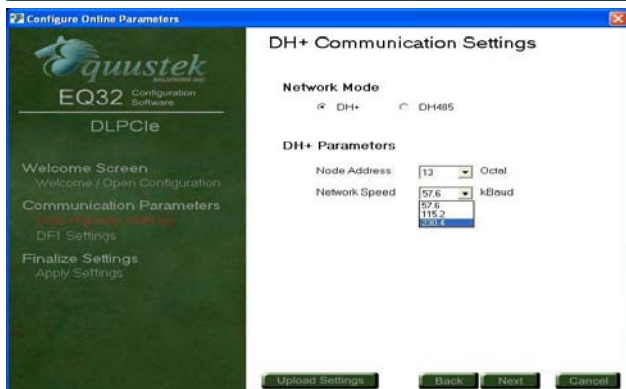
1. Insert the Equustek CD. The selection screen (left) should start up automatically. If it does not start automatically, select *Run* from the Start Menu and enter "D:\Autorun.exe" where "D" is the drive letter of your CD drive.
2. From the selection screen, choose *Install Software* → *Install EQ32 Configuration Software* → *Install Latest EQ32 Software* to install the latest version of EQ32.
3. To run the EQ32 software, Press the *Start Button* (bottom left of screen) then select *Programs* → *Equustek Solutions Inc.* → *EQ32*.



1. From the EQ32 Welcome Screen, click on the *DLPCle* button.



2. From the EQ32 Main Menu, select the COM Port that has been assigned to the DLPCIE and then click the *Configure* button.



3. From the Configuration Menu:
 - a. Select the Network Protocol (based on the model of DLPCIE you have ordered DH+ or DH485).
 - b. Select the network parameters you want to assign to the card (Node address and the Network baud rate).
 - c. Under the DF1 Communication settings Select the DF1 Bus Protocol settings, select the error checking method and other DF1 parameters. Typical users will want to leave the settings at their default values.



4. After all of the parameters are chosen, click on next then press the *DOWNLOAD to DL* button to send the parameters to the DLPCIE. An “A-OK Parameters Transferred Successfully” will appear if the parameters were successfully downloaded. The DLPCIE will automatically reset after transferring the configuration and go online.
5. If you wish to save the configuration settings, press the *Configuration Settings* button and select *Save Configuration Settings*.

Select *Return to Main Menu* and then select *Exit EQ32* to exit the program.

Now The DLPCIE is now ready for online operation, you can start your software like **RSLINX or Kepware, Wonderware or any other software you are using** and please make sure to configure the **RS232DF1 driver** not the KT driver, similar to setting our DL3500 RSLINX DF1 driver which can be shown in the link below.

<http://www.youtube.com/watch?v=v50QftpGkpW>