



DL4500-EDH+/EDH-485 Hardware Quick Start **with Device installer version 3.6**

The DL4500-EDH+/EDH-485 (now referred to as DL4500) hardware platform was designed to be a gateway, which interfaces your Ethernet TCP/IP to A-B's Data Highway Plus (DH+) or DH-485 network. It comes in a DC powered Din-Rail Mountable compact cabinet for ease of portability and installation. The DL4500 combines the Lantronix Ethernet Microprocessor with our proven A-B DH+ or DH-485 interface. This allows for one to four sockets (connections) to be running simultaneously to one DH+ or DH-485 network.

This quick start is to help you get started with your DL4500, for more in-depth configuration please refer to the DL4500 User Manual.

Install the Lantronix software (DeviceInstaller version 3.6 and Redirector)

1. Download Device Installer version 3.6 from the web
 - DeviceInstaller - (<ftp://ftp.lantronix.com/pub/DeviceInstaller/>)
 - Download Release notes for DeviceInstaller v3.6 (<ftp://ftp.lantronix.com/pub/DeviceInstaller/v3.6/Release.txt>)
2. **Device Installer requires Microsofts .NET Framwork version 1.1**
If you do not already have .NET Framework 1.1 installed, you can download it from the link below: <ftp://ftp.lantronix.com/pub/DeviceInstaller/dotnetfx.exe>
3. Redirector - <ftp://ftp.lantronix.com/pub/> inside the **redirector folder**

Note: A reboot of your PC will be required at this time.

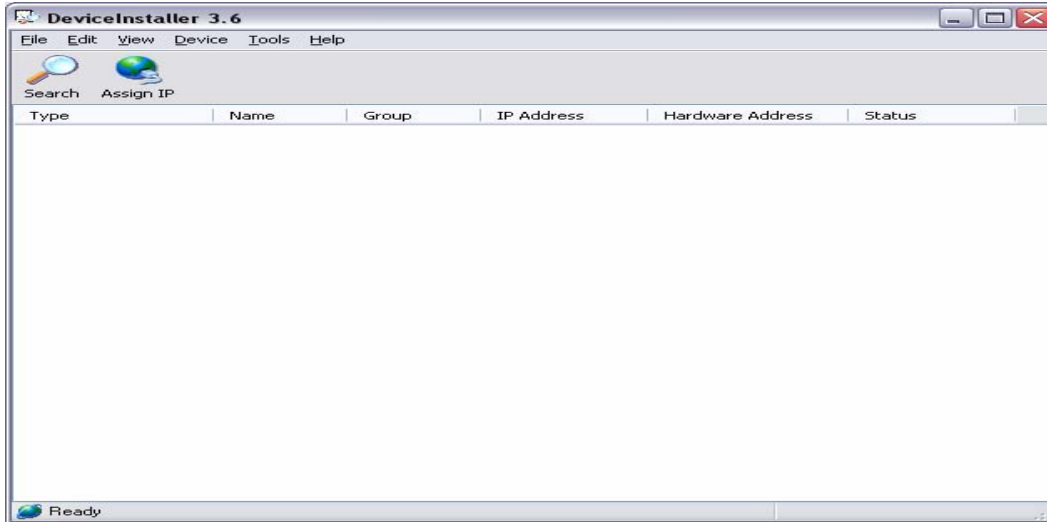
Equustek Solutions, Inc.
Suite 815 – 1200 W 73rd Ave.
Vancouver, BC, Canada – V6P 6G5
Toll Free: 888-387-3787
Tel: (604) 266-8547 Fax (604) 266-9547
Web-site: www.equustek.com




Next is to set the IP address on the internal Lantronix Ethernet Microprocessor.

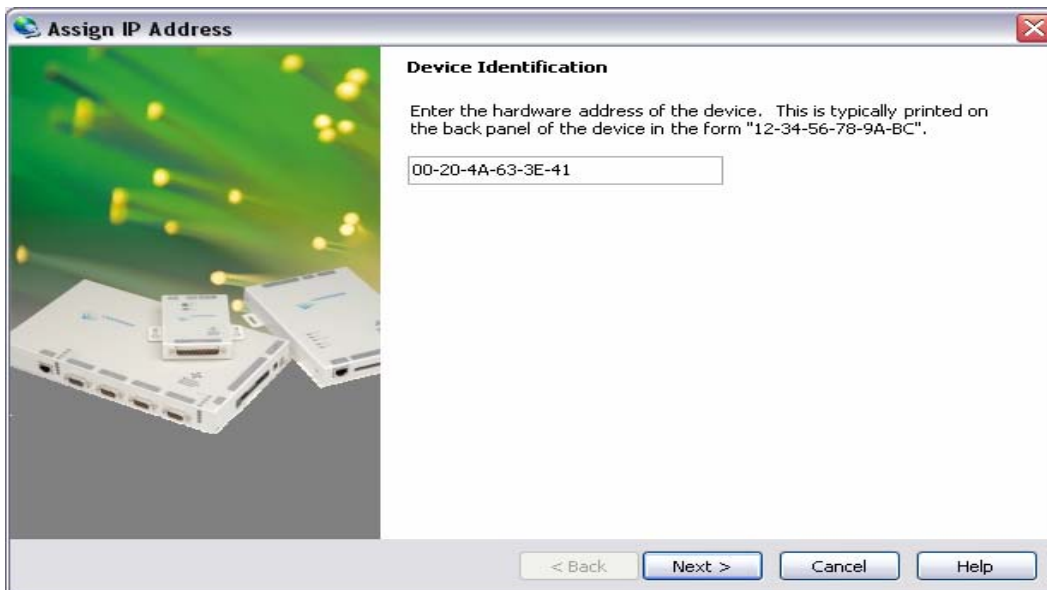
Assign IP Address and Network Class

Click the Start button on the Task Bar and select **All Programs\Lantronix\DeviceInstaller\DeviceInstaller**. The Device Installer window displays.



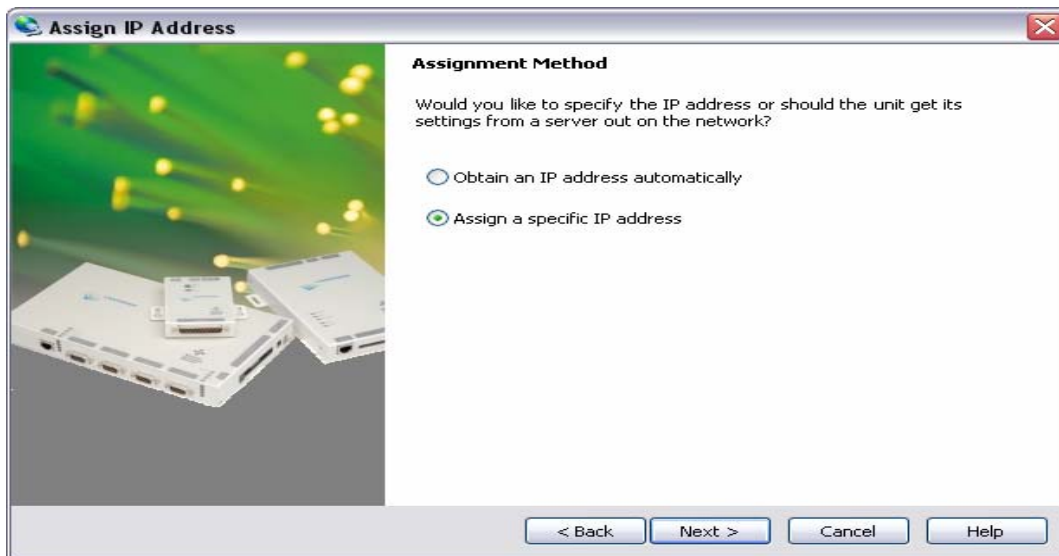
DeviceInstaller Window

1. Click the Assign IP  icon. The **Assign IP Address** window displays.

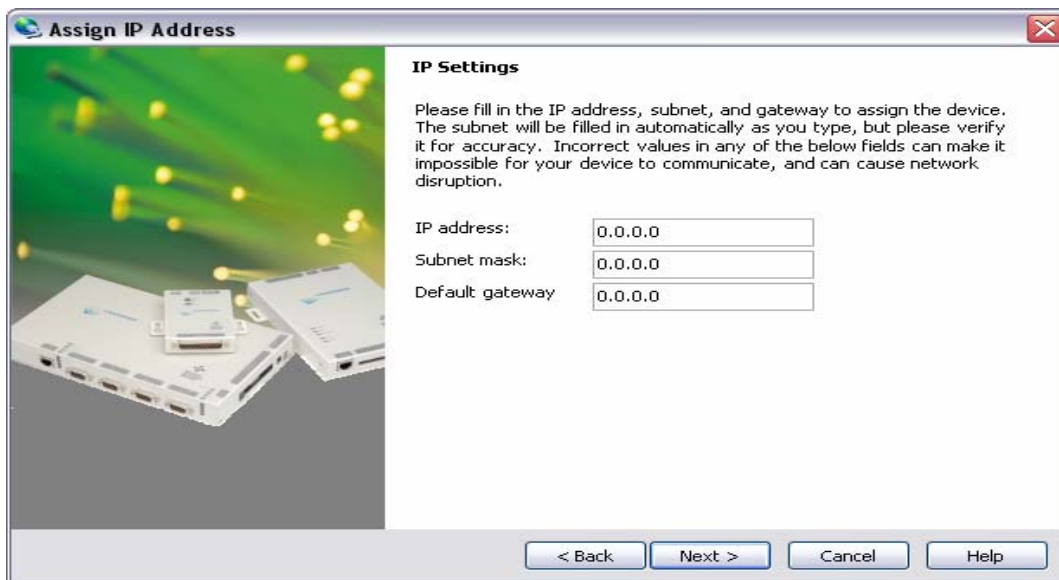


Assign IP Address Window

2. In the **Device Identification** field, enter the Ethernet Address (MAC address), which is listed on the label on the bottom of the unit.

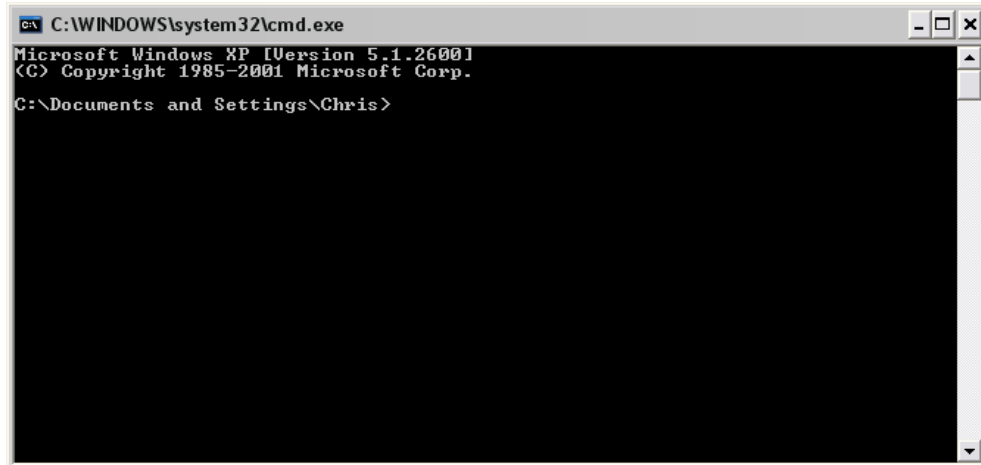


3. In the **Assignment Method** field
 - Select **Assign a specific IP address**.
 - Click next



4. In the **IP Settings** field
 - Insert your **IP address, Subnet mask, Default gateway**.
5. If you don't know how to get your **IP address, Subnet mask and Default gateway**. Follow those steps to get them.

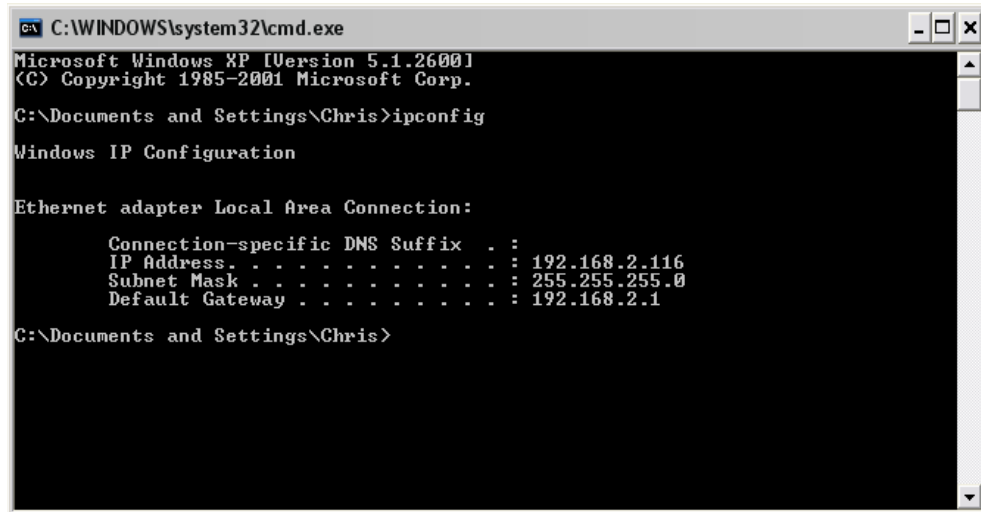
- Click the Start button on the Task Bar and select **run** and typed **cmd**



```
C:\WINDOWS\system32\cmd.exe
Microsoft Windows XP [Version 5.1.2600]
(C) Copyright 1985-2001 Microsoft Corp.
C:\Documents and Settings\Chris>
```

-

- When the window displays, typed **ipconfig** to get your IP address, Subnet mask and Default gateway.



```
C:\WINDOWS\system32\cmd.exe
Microsoft Windows XP [Version 5.1.2600]
(C) Copyright 1985-2001 Microsoft Corp.
C:\Documents and Settings\Chris>ipconfig
Windows IP Configuration

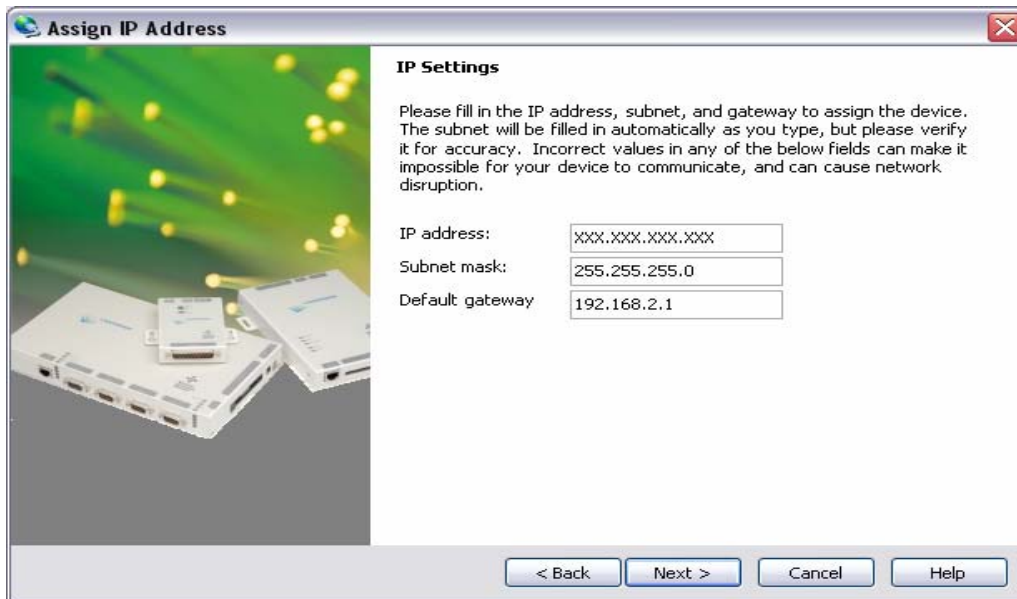
Ethernet adapter Local Area Connection:

    Connection-specific DNS Suffix . . :
    IP Address . . . . . : 192.168.2.116
    Subnet Mask . . . . . : 255.255.255.0
    Default Gateway . . . . . : 192.168.2.1

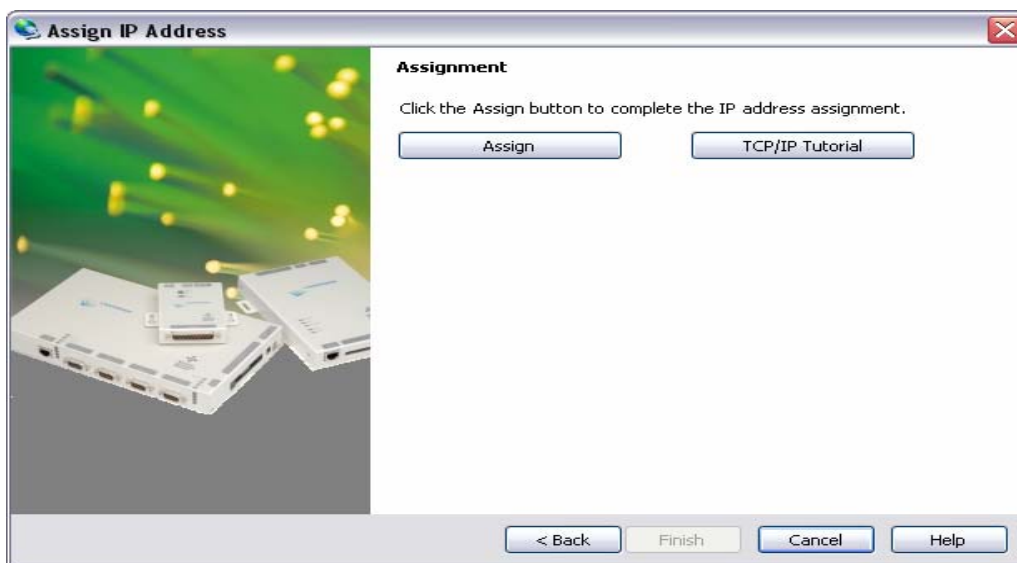
C:\Documents and Settings\Chris>
```

-

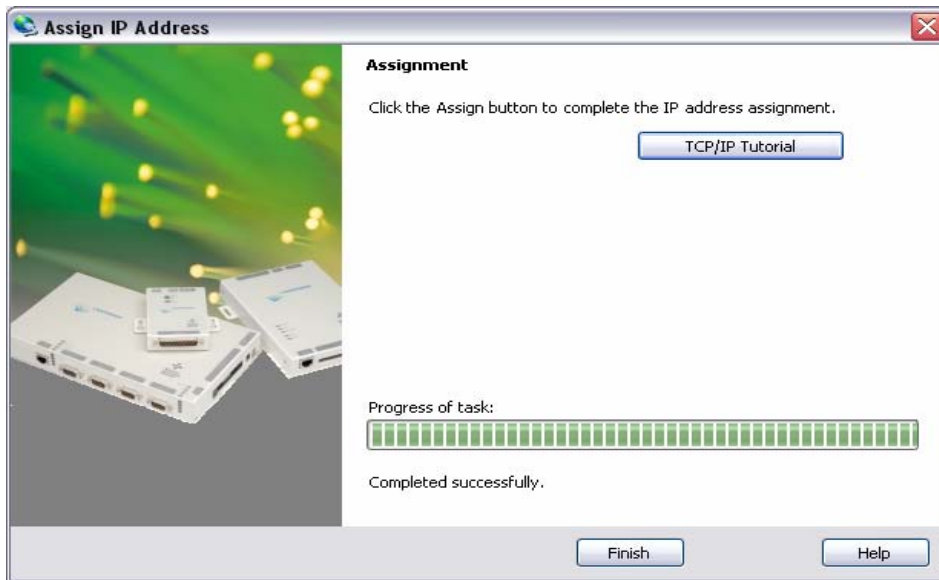
- Now you have the whole information you needed.



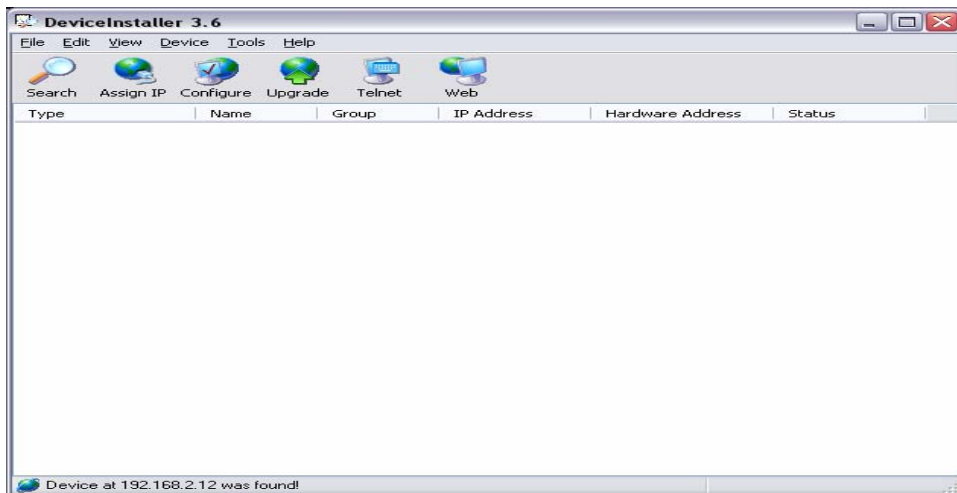
6. In the **IP Settings** field, fill in your IP address, Subnet mask, Default gateway and click next.



7. Click the **Assign** button to complete the IP address assignment



8. Click **Finish**



9. In the status bar, you should have: Device at XXX.XXX.XXX.XXX was found.



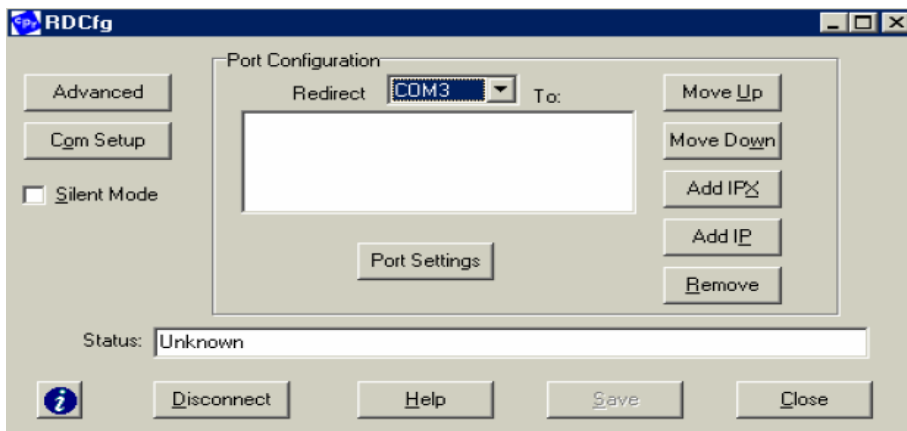
Redirect the IP address via a Virtual COM Port

The Redirector maps the IP address and Port number configured in the DL4500-EDH+ to a virtual COM port. The virtual COM port can then be used to send the Serial DF1 driver supplied by your software or MMI package (RSLINX, Kepware, Citect, etc) to tunnel the DF1 protocol to the DL4500-EDH+ where it will be interpreted and sent to the corresponding DH+ node.

1. To access the redirector software click Start/Programs/Lantronix Redirector/Configuration



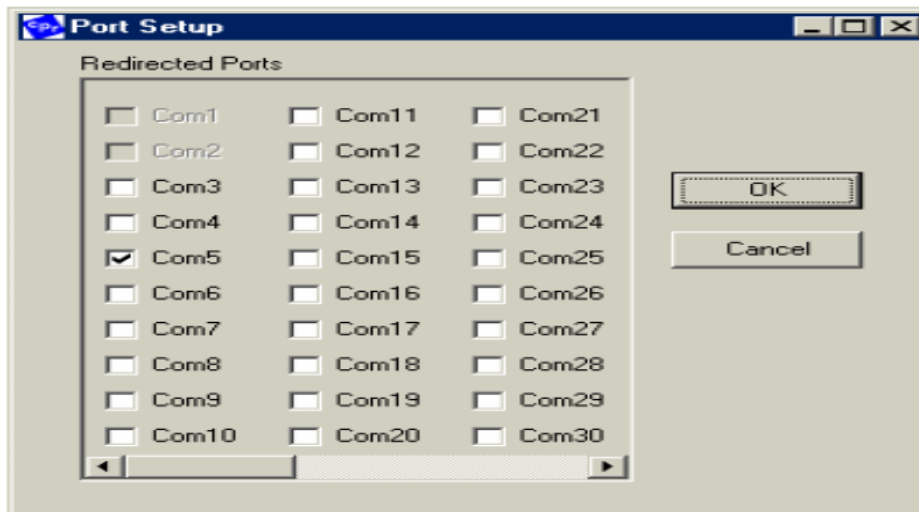
2. The next step is to select a COM port to redirect from. You will see a similar window as shown below. Select the "Com Setup" button in order to configure a COM port.



Redirector Window

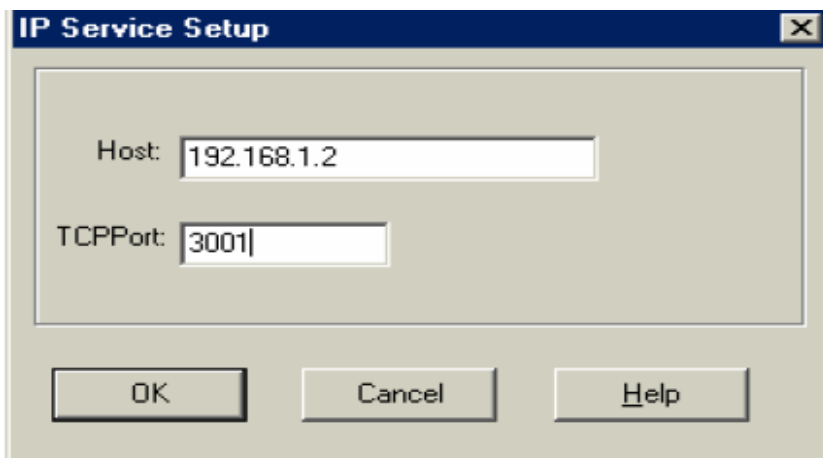
3. Start with COM5 or higher to avoid the old legacy ports of COM1 to COM4. You should also check which COM ports your application supports; some only support from COM1 to COM8. In this example I have selected COM5 to be redirected. COM1, COM2, are greyed out - this indicates that they physically exist as hardware already. This is another good reason to avoid using COM1 to COM4 for redirecting - it avoids future conflicts if you add another serial port or two.





COM Port selection Window

4. After you have selected the COM port you wish to use, press the **OK** button.
5. You will now need to assign the IP address and the Port ID to the COM port.
6. Press the **Add IP** button to configure the CoBox's details.



Add IP Window

- For example, COM5 is set to redirect to a CoBox with IP address 192.168.1.2 and a TCP Port of 3001. If you have more questions please press the **Help** button.
7. Click **OK** button
 8. Click **Save** Button
 9. Reboot system

