



DL4500-EDH+/EDH-485 Hardware Quick Start

The DL4500-EDH+/EDH-485 (now referred to as DL4500) hardware platform was designed to be a gateway, which interfaces your Ethernet TCP/IP to A-B's Data Highway Plus (DH+) or DH-485 network. It comes in a DC powered Din-Rail Mountable compact cabinet for ease of portability and installation. The DL4500 combines the Lantronix Ethernet Microprocessor with our proven A-B DH+ or DH-485 interface. This allows for one to four sockets (connections) to be running simultaneously to one DH+ or DH-485 network.

This quick start is to help you get started with your DL4500, for more in-depth configuration please refer to the DL4500 User Manual.

Install the Lantronix software (DeviceInstaller and Redirector)

1. Insert the Equustek installation product CD into your CD-ROM drive.
 - Select DL4500 Software from the menu
 - Select Install Lantronix DeviceInstaller from the menu
 - Select Install Lantronix Redirector Software from the menu
2. If Menu fails to Load
 - Click the Start button on the Task Bar and select Run.
 - Enter your CD drive letter, colon, backslash, cd-start.exe
 - (E.g., E:\cd-start.exe)
3. To Download from the web
 - DeviceInstaller - (<ftp://ftp.lantronix.com/pub/DeviceInstaller/>)
 - Redirector - <ftp://ftp.lantronix.com/pub/> inside the **redirector** folder

Note: A reboot of your PC will be required at this time.

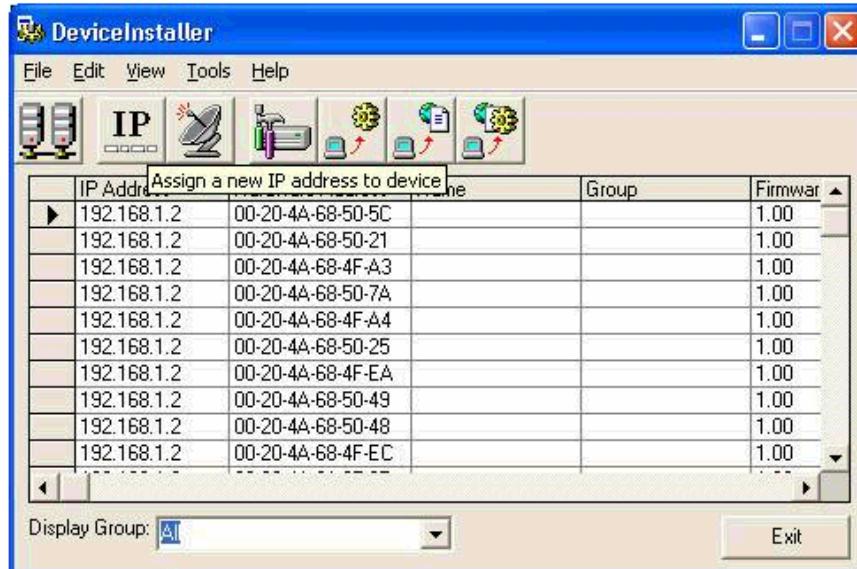
Equustek Solutions, Inc.
Suite 815 – 1200 W 73rd Ave.
Vancouver, BC, Canada – V6P 6G5
Toll Free: 888-387-3787
Tel: (604) 266-8547 Fax (604) 266-9547
Web-site: www.equustek.com



Next is to set the IP address on the internal Lantronix Ethernet Microprocessor.

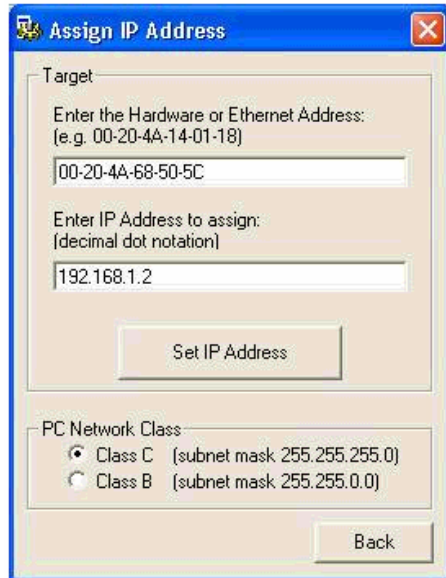
Assign IP Address and Network Class

Click the Start button on the Task Bar and select **Programs \Device Installer\DeviceInstaller**. The Device Installer window displays.



DeviceInstaller Window

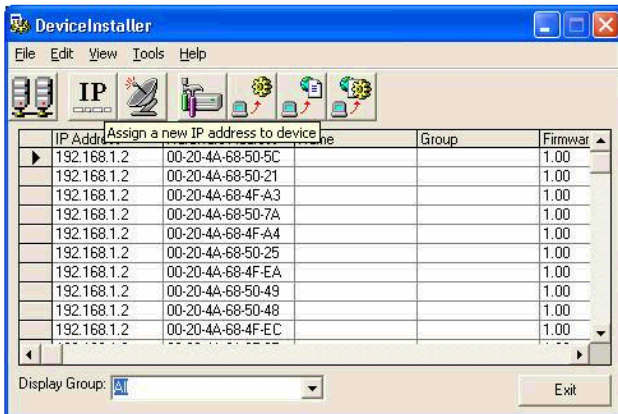
1. Click the IP icon.  The **Assign IP Address** window displays.



Assign IP Address Window


2. In the **Enter the Hardware or Ethernet Address** field, enter the Ethernet Address (MAC address), which is listed on the label on the bottom of the unit.
3. In the **Enter IP Address to assign** field, enter the unit's IP address in XXX.XXX.XXX.XXX format.

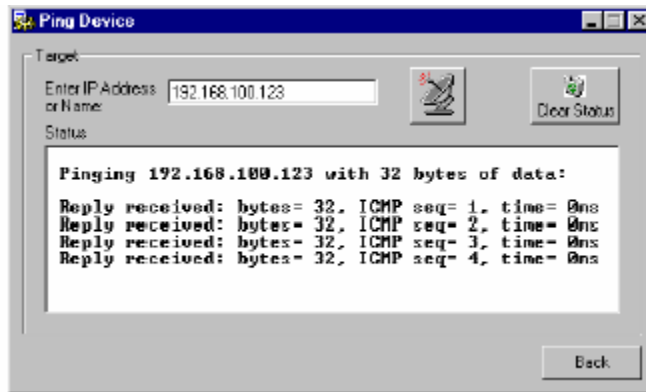
4. In the PC Network Class section, select the class (subnet mask).
(Most users select Class C).
5. Click the **Set IP Address** button.
6. Confirm that the “Successful” message displays and click OK.
7. Click the **Back** button to return to the DeviceInstaller window.



DeviceInstaller Window

Test the IP Address

1. Click the **Ping** icon.  The Ping Device window displays. Enter the IP Address and click the Ping icon.



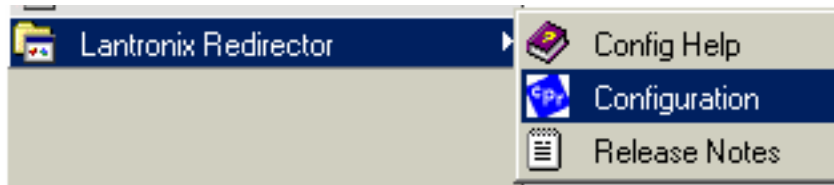
Ping Device Window

2. Confirm that “Reply received” messages display in the window, indicating that the IP address has been entered successfully.
Note: If you do not receive “Reply received” messages, make sure the unit is properly attached to the network and that the IP address assigned is valid for the particular Network segment you are working with. If you are not sure, check with your systems Administrator.
3. Click the Back button to return to the Device Installer window.

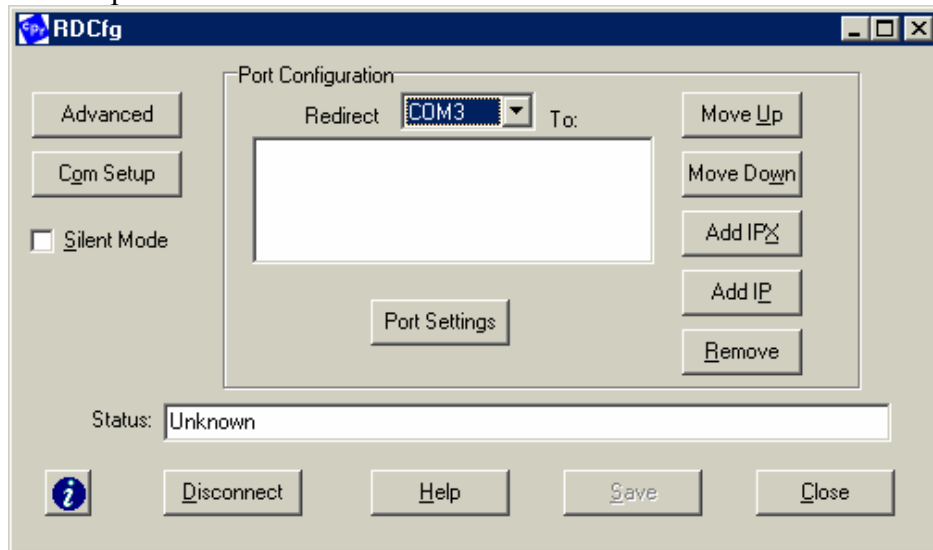
Redirect the IP address via a Virtual COM Port

The Redirector maps the IP address and Port number configured in the DL4500-EDH+ to a virtual COM port. The virtual COM port can then be used to send the Serial DF1 driver supplied by your software or MMI package (RSLINX, Kepware, Citect, etc) to tunnel the DF1 protocol to the DL4500-EDH+ where it will be interpreted and sent to the corresponding DH+ node.

1. To access the redirector software click Start/Programs/Lantronix Redirector/Configuration

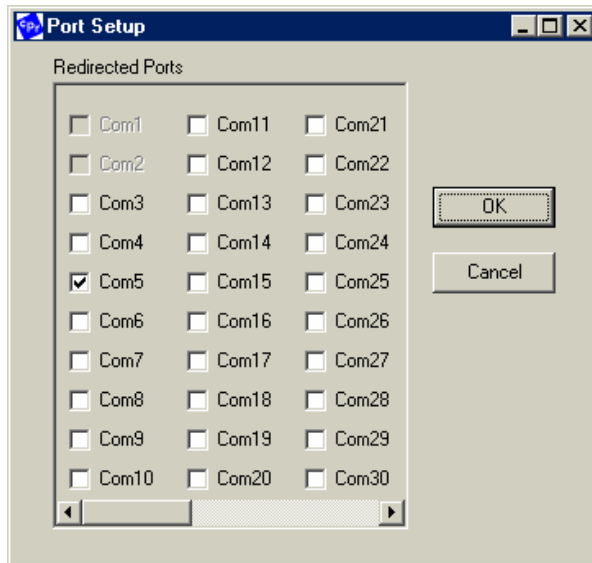


2. The next step is to select a COM port to redirect from. You will see a similar window as shown below. Select the “Com Setup” button in order to configure a COM port.



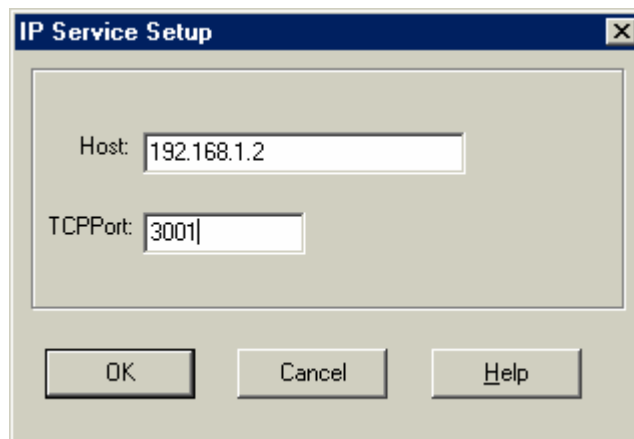
Redirector Window

3. Start with COM5 or higher to avoid the old legacy ports of COM1 to COM4. You should also check which COM ports your application supports; some only support from COM1 to COM8. In this example I have selected COM5 to be redirected. COM1, COM2, are greyed out - this indicates that they physically exist as hardware already. This is another good reason to avoid using COM1 to COM4 for redirecting - it avoids future conflicts if you add another serial port or two.



COM Port selection Window

4. After you have selected the COM port you wish to use, press the **OK** button.
5. You will now need to assign the IP address and the Port ID to the COM port.
6. Press the **Add IP** button to configure the CoBox's details.



Add IP Window

- a. For example, COM5 is set to redirect to a CoBox with IP address 192.168.1.2 and a TCP Port of 3001. If you have more questions please press the **Help** button.
7. Click **OK** button
 8. Click **Save** Button
 9. Reboot system