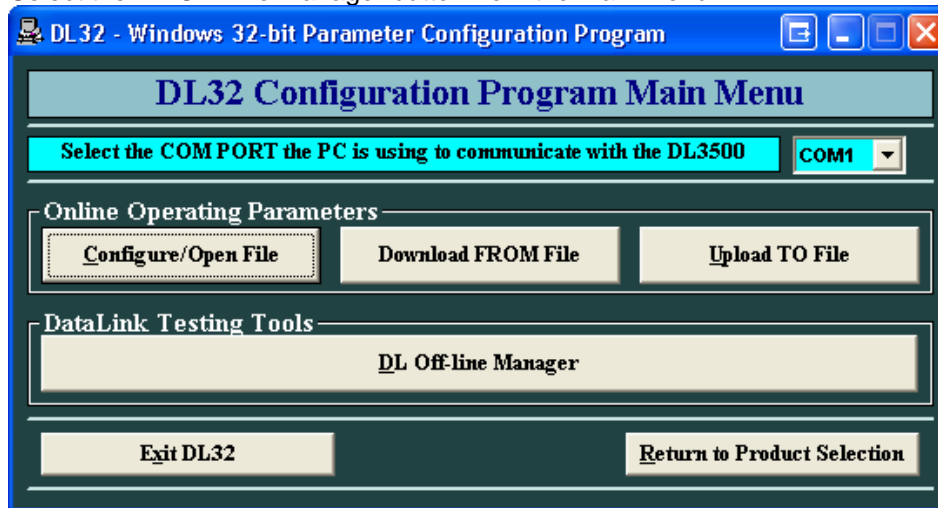


Updating Flash on DL Model Units

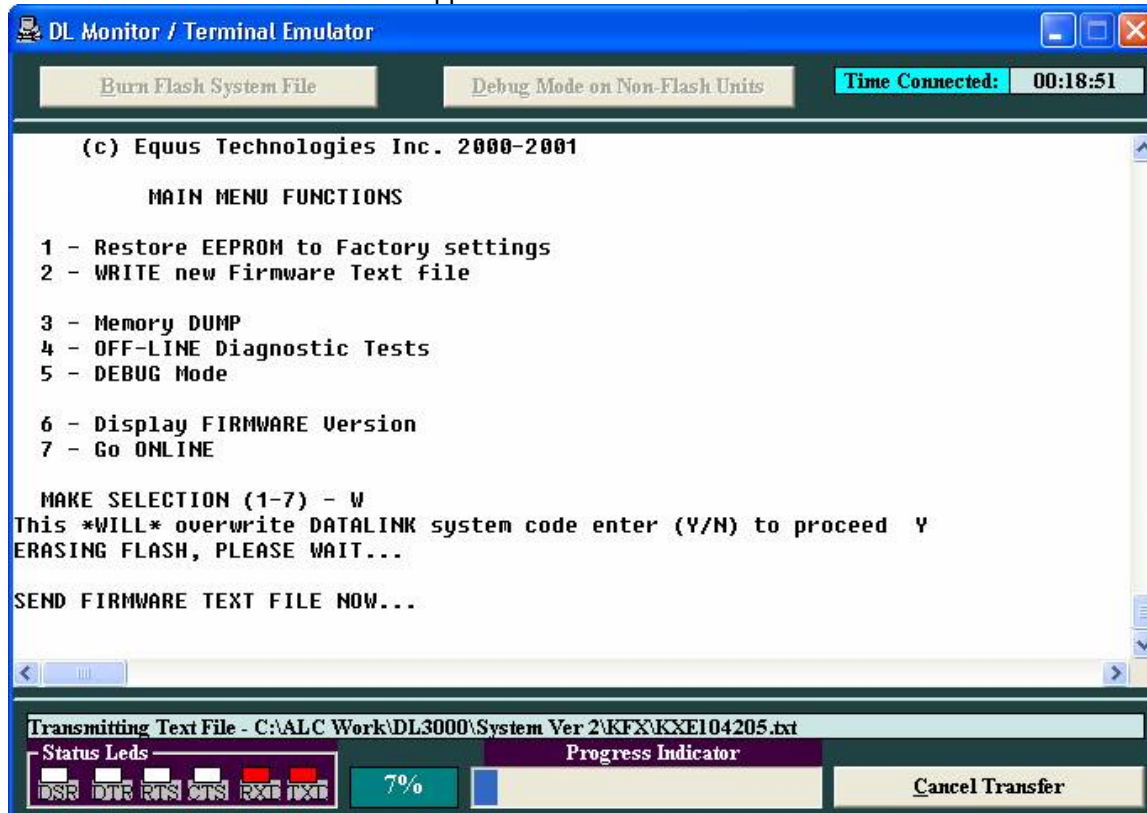
The procedure for upgrading the Flash System on all DL models is the same. Once you have obtained and unzipped (if necessary) a .txt file from Equustek Solutions you are ready to proceed with upgrading the firmware.

Upgrading the Firmware on a DL DOES NOT erase the units ONLINE configuration settings.

Select the DL Off-Line Manager button from the main menu.



The menu as shown below should appear.



Follow the following steps after the menu appears..

- **Choose option '2' or 'W' for Write, then press 'Y' for yes...**
- **The "SEND FIRMWARE TEXT FILE NOW...." Message appears**
- **Click on the Burn Flash System File button in the top left.**
- **You will select the .txt file sent to you and as shown burn the flash...**

After getting to 100 % the following will appear...

***A-OK* BURN COMPLETE!**

MAKE SELECTION (1-7) –

NOTE: It may take upto 10 secs for the A-OK to appear after the progress bar hits 100%. If you wait longer than 30 seconds hit the <ENTER> key and wait another 15 secs. Repeat to a maximum of 4 times. If the A-OK still does not appear then hit the configure button (a reset might be necessary as well, and then the configure button) to restart the process. If it fails again contact Equustek to get another file as the one might be corrupted.

Choose Option '6' to display the firmware version and you should get the version numbers of the supplied firmware:

MAKE SELECTION (1-7) - 6

**DL MODEL : -KFX DF1/BRIDGING-GSW- 1.04-Jul.29,04
SYSTEM VER: -Rev 2.05-Feb16/04**

MAKE SELECTION (1-7)

Your firmware should be updated.

**If you have any more questions please contact Tech support at Equustek Solutions Inc.
Toll Free: 1-888-387-3787 or 604-266-8547 or via email at info@equustek.com**