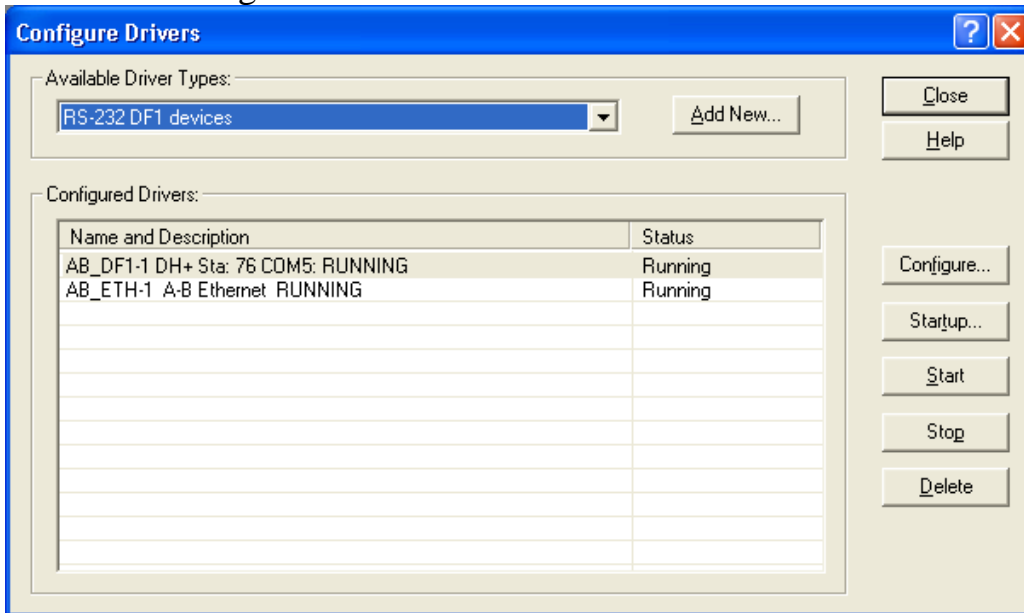


DL4500-EDH+/EDH-485 RSLINX Quick Start

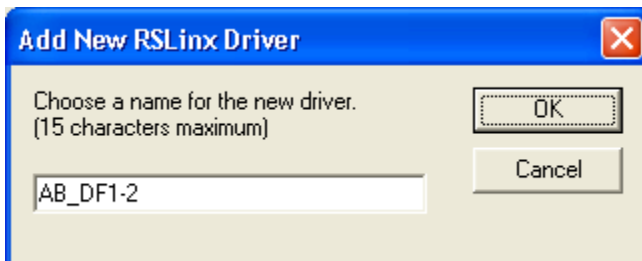
This document assumes that the DL4500-EDH+/EDH-485 (now referred to as DL4500) hardware has been installed and configured as referred to in the [DL4500-EDH+/EDH-485 Hardware Quick Start](#) document.

This quick start is to help you get started with your DL4500 using RSLINX.

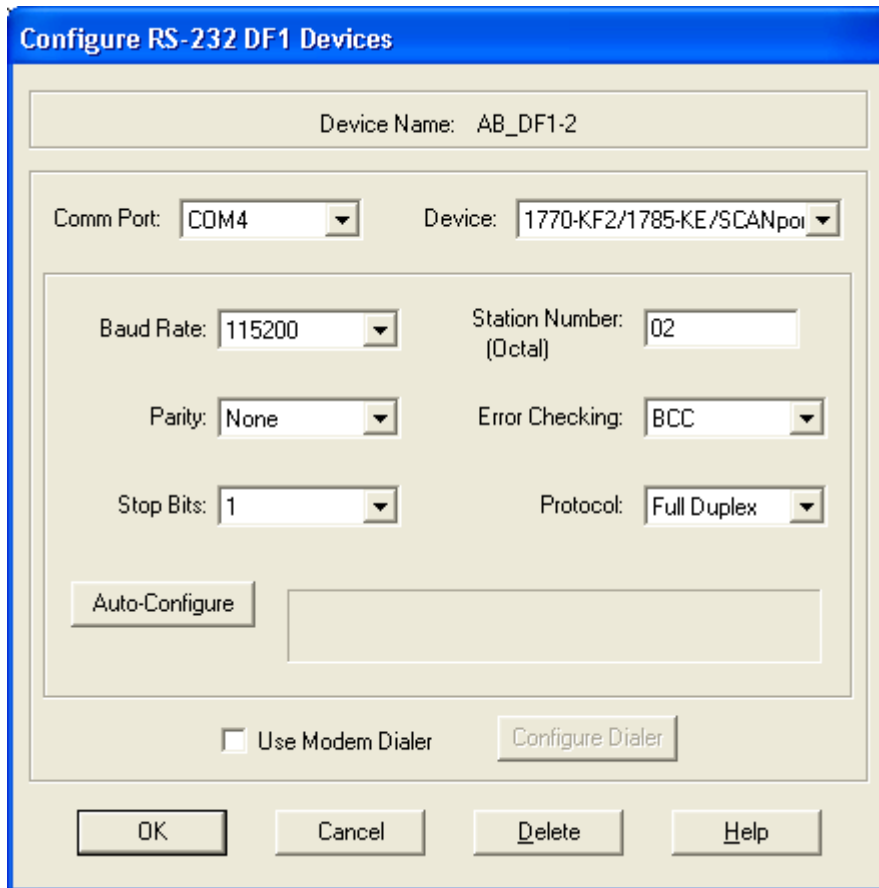
1. Start RSLINX
2. Select Configure Drivers



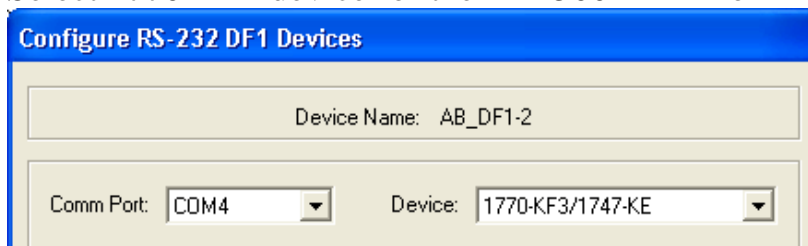
3. Choose RS-232 DF1 Devices from the Available Driver Types
4. Click on Add New



5. Type in a name for the driver or use the default
6. Click OK



7. Select the Comm Port that has been configured in your Redirector software as the Virtual Com Port for the IP address of the DL4500.
8. Select 1770-KF2 device for the DL4500-EDH+ or



1770-KF3 for the DL4500-EDH-485

9. Set the station number to the last octet of the IP address (Use the following Mapping table for the IP address to DH+/DH-485 Node number, make sure to convert it to octal).

Node Address	Last Octet of IP address
0-63	0-63
0-63	64-127
0-63	128-191
0-63	192-255

DH+ Node Table

Node Address	Last Octet of IP address
0-31	0-31
0-31	32-63
0-31	64-95
0-31	96-127
0-31	128-161
0-31	162-191
0-31	192-223
0-31	224-255

DH-485 Node Table

10. Set the Baud Rate to match the setting used in the Ethernet configuration of the DL4500.
11. Ensure Parity None, 1 Stop Bit, BCC Error Checking, and Full Duplex Protocol
12. Click OK.

The RSLINX Driver is now configured. RSWHO should show all the nodes on your DH+ or DH-485 network.