

DL4500-EDH+ STD with IGS demo reading data from PLC5 using Ethernet Encapsulated DF1 driver.

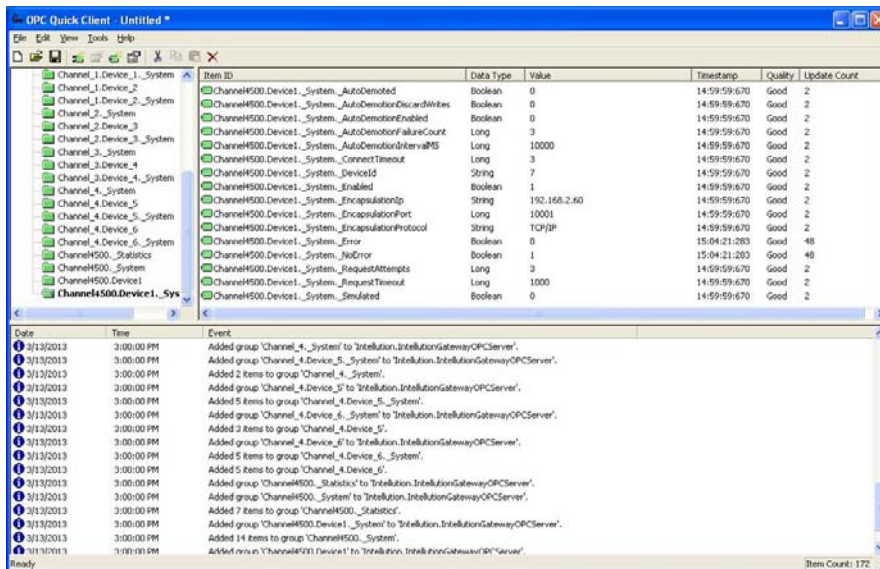
In this example we are reading 5 words from integer file 7 starting at word0

Also reading 5 words from floating file F8 starting at word 0.

IP address of the DL4500 is 192.168.2.60

Node address of the DL4500 on DH+ is 60 decimal (last octet of the IP address).

Node address of the PLC5 on DH+ is 7 in this application need to be in decimal.



Industrial Gateway OPC Server - [C:\Program Files\Industrial Gateway Server\projects\simdemo.opf]

File Edit View Users Tools Help

Channel_0_User_Defined
 Channel_1
 Channel_2
 Channel_3
 Channel_4

Tag Name	Address	Data Type	Scan Rate	Scaling	Description

Date Time User

3/13/2013	2:01:07 PM	D
3/13/2013	2:01:07 PM	D
3/13/2013	2:01:07 PM	D
3/13/2013	2:01:07 PM	D
3/13/2013	2:01:14 PM	D
3/13/2013	2:01:14 PM	D
3/13/2013	2:07:24 PM	D
3/13/2013	2:07:24 PM	D
3/13/2013	2:07:24 PM	D
3/13/2013	2:08:50 PM	D
3/13/2013	2:08:50 PM	D
3/13/2013	2:08:50 PM	D
3/13/2013	2:08:50 PM	D
3/13/2013	2:08:50 PM	D
3/13/2013	2:08:50 PM	D
3/13/2013	2:08:50 PM	D
3/13/2013	2:08:50 PM	D
3/13/2013	2:08:50 PM	D
3/13/2013	2:08:50 PM	D
3/13/2013	2:08:50 PM	D
3/13/2013	2:08:50 PM	D
3/13/2013	2:08:58 PM	D
3/13/2013	2:08:58 PM	D
3/13/2013	2:08:58 PM	D
3/13/2013	2:08:58 PM	D
3/13/2013	2:08:58 PM	D
3/13/2013	2:08:58 PM	D
3/13/2013	2:08:58 PM	D
3/13/2013	2:09:09 PM	D
3/13/2013	2:09:09 PM	D

Ready Clients: 0 Active tags: 0 of 0

New Channel - Communications



ID: COM 1

Baud rate: 19200

Data bits: 8

Parity: None

Stop bits: 1 2

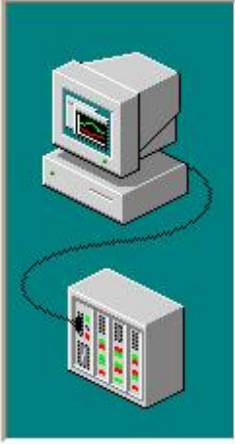
Flow control: None

Use modem Report comm. errors

Use Ethernet encapsulation

< Back Next > Cancel Help

New Channel - Network Interface

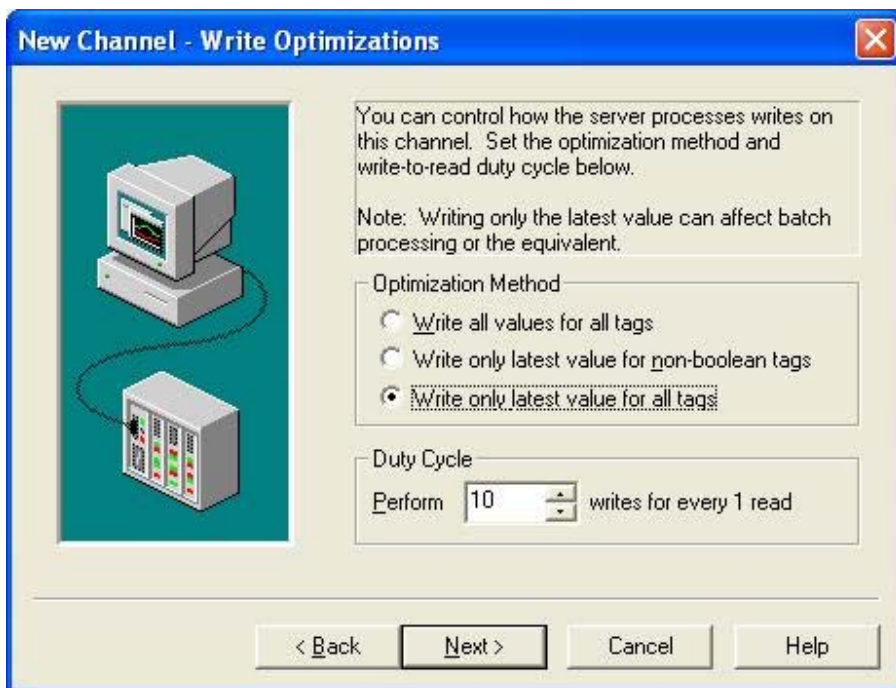


This channel is configured to communicate over a network. You can select the network adapter that the driver should use from the list below.

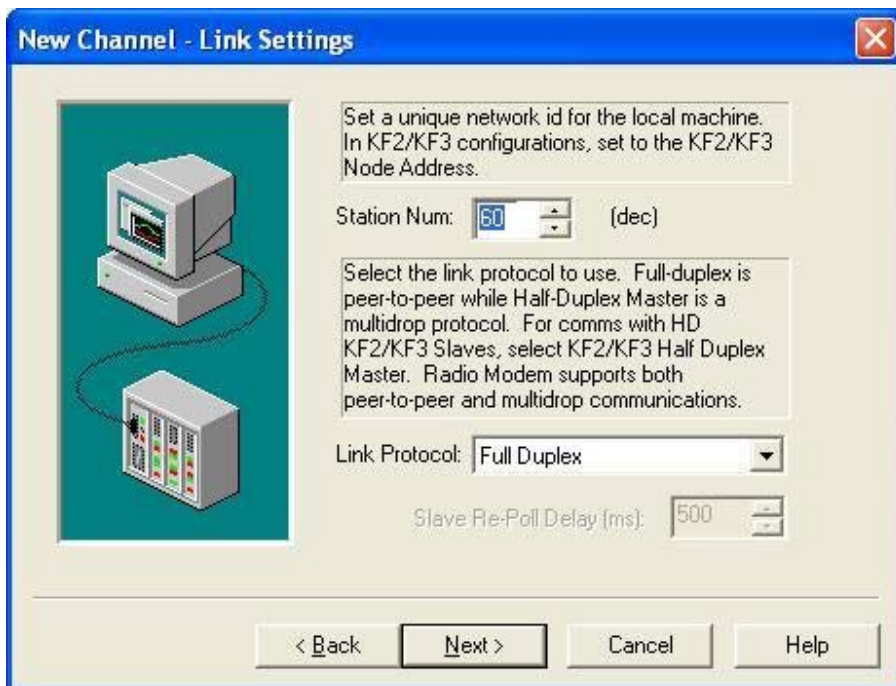
Select 'Default' if you want the operating system to choose the network adapter for you.

Network Adapter:
 Default

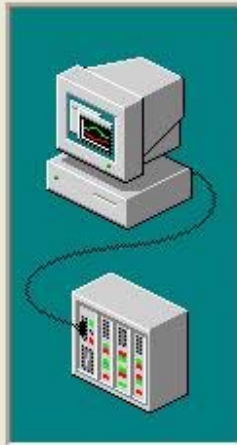
< Back Next > Cancel Help



Node address of the DL4500 on DH+ network is its last Octet in decimal, here it is 60.



New Channel - Summary



If the following information is correct click 'Finish' to save the settings for the new channel.

Name: Channel4500
Device Driver: DF1
Diagnostics: Disabled

Communications Parameters
Serial ID: Ethernet Encapsulation

Network Adapter:
Default

Write Optimization:
Write only latest value for all tags
10 writes per read

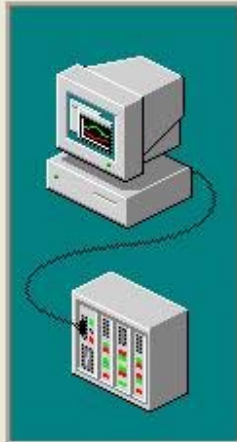
< Back

Finish

Cancel

Help

New Device - Name



A device name can be from 1 to 256 characters in length.

Names can not contain periods, double quotations or start with an underscore.

Device name:

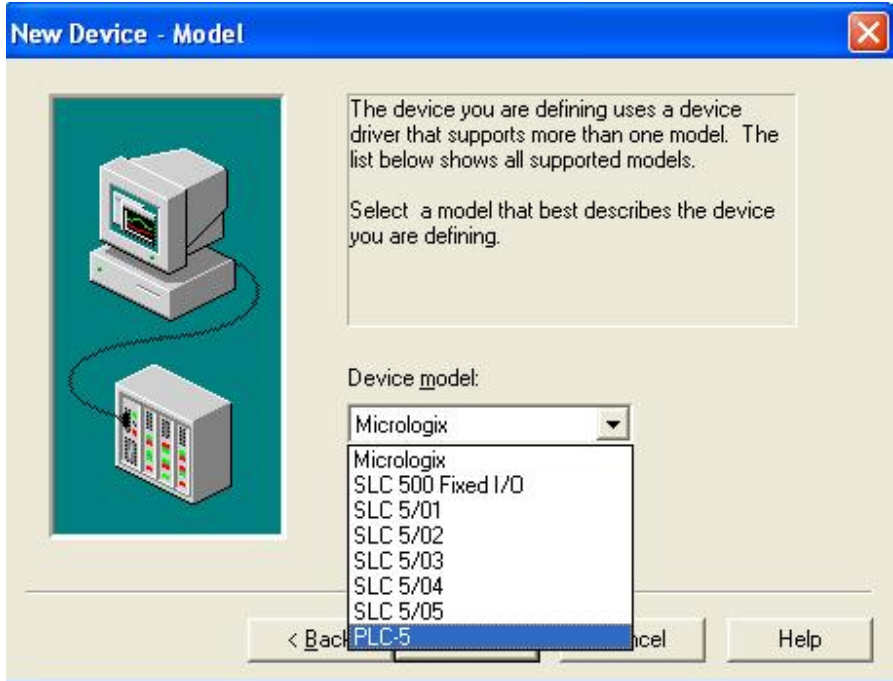
Device1

< Back

Next >

Cancel

Help



Here Node address of the PLC5 is 7 please note that this should be in decimal.

New Device - ID



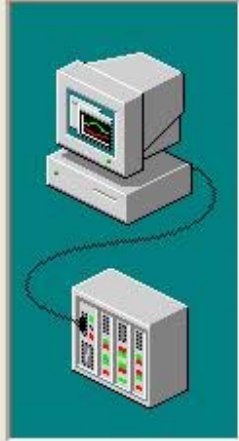
The device you are defining may be multidropped as part of a network of devices. In order to communicate with the device, it must be assigned a unique ID.

Your documentation for the device may refer to this as a "Network ID" or "Network Address."

Device ID:

< Back Next > Cancel Help

New Device - Ethernet Encapsulation



The device you are defining is on a channel using solicited ethernet encapsulation. In order to send requests to this device, you need to define the device IP address, port number and protocol type.

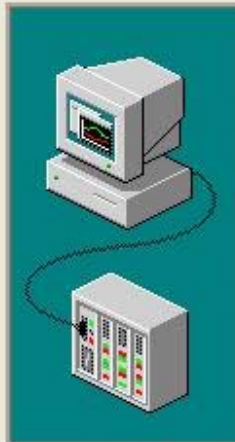
IP Address:

Port Number:

Protocol:

< Back Next > Cancel Help

New Device - Timing



The device you are defining has communications timing parameters that you can configure.

Connect timeout: seconds

Request timeout: milliseconds

Fail after: successive timeouts

Inter-request delay: milliseconds

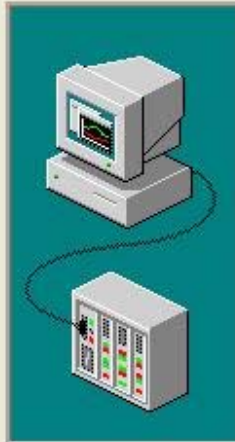
< Back

Next >

Cancel

Help

New Device - Auto-Demotion



You can demote a device for a specific period upon communications failures. During this time no read request (writes if applicable) will be sent to the device. Demoting a failed device will prevent stalling communications with other devices on the channel.

Enable auto device demotion on communication failures

Demote after: successive failures

Demote for: milliseconds

Discard write requests during the demotion period

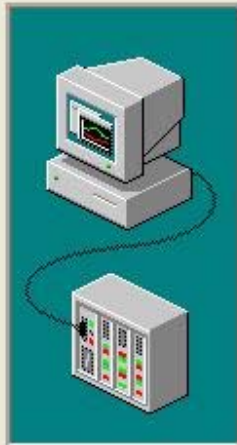
< Back

Next >

Cancel

Help

New Device - Protocol Settings



Select the appropriate error checking method for the driver to use. For PLC-5 users, select whether floats should be word swapped. A-B PLC-5 devices swap words. Some devices may not swap float words. Select request size to maximize communications speed.

Error Checking Method

CRC BCC

Swap PLC-5 Float Words?

Yes No

Request Size

Large Small

< Back

Next >

Cancel

Help

OPC Quick Client - Untitled *

File Edit View Tools Help



Item ID	Data Type	Value	Timestamp	Quality
Channel4500.Device1.FL8	Float Array	[3.87295E+028, 3.78013E+028, 8.26722E-016, 3.78016E+028, 5.80937E+006]	14:20:50:610	Good
Channel4500.Device1.Int7	Word Array	[1945, 3890, 5835, 1945, 1945]	14:20:55:797	Good

Date	Time	Event
3/13/2013	2:19:44 PM	Added 5 items to group 'Channel_3.Device_4._System'.
3/13/2013	2:19:44 PM	Added 2 items to group 'Channel_3.Device_4'.
3/13/2013	2:19:44 PM	Added group 'Channel_4._System' to 'Intellution.IntellutionGatewayOPCServer'.
3/13/2013	2:19:44 PM	Added group 'Channel_4.Device_5._System' to 'Intellution.IntellutionGatewayOPCServer'.
3/13/2013	2:19:44 PM	Added 2 items to group 'Channel_4._System'.
3/13/2013	2:19:44 PM	Added group 'Channel_4.Device_5' to 'Intellution.IntellutionGatewayOPCServer'.
3/13/2013	2:19:44 PM	Added 5 items to group 'Channel_4.Device_5._System'.
3/13/2013	2:19:44 PM	Added group 'Channel_4.Device_6._System' to 'Intellution.IntellutionGatewayOPCServer'.
3/13/2013	2:19:44 PM	Added 3 items to group 'Channel_4.Device_5'.
3/13/2013	2:19:44 PM	Added group 'Channel_4.Device_6' to 'Intellution.IntellutionGatewayOPCServer'.
3/13/2013	2:19:44 PM	Added 5 items to group 'Channel_4.Device_6._System'.
3/13/2013	2:19:44 PM	Added 5 items to group 'Channel_4.Device_6'.
3/13/2013	2:19:44 PM	Added group 'Channel4500._System' to 'Intellution.IntellutionGatewayOPCServer'.
3/13/2013	2:19:44 PM	Added group 'Channel4500.Device1._System' to 'Intellution.IntellutionGatewayOPCServer'.
3/13/2013	2:19:44 PM	Added 14 items to group 'Channel4500._System'.
3/13/2013	2:19:44 PM	Added group 'Channel4500.Device1' to 'Intellution.IntellutionGatewayOPCServer'.
3/13/2013	2:19:44 PM	Added 16 items to group 'Channel4500.Device1._System'.
3/13/2013	2:19:44 PM	Added 2 items to group 'Channel4500.Device1'.

Ready

Item Count: 165

OPC Quick Client - Untitled *

File Edit View Tools Help

Channel_1.Device1._System
 Channel_1.Device_2
 Channel_1.Device_2._System
 Channel_2._System
 Channel_2.Device_3
 Channel_2.Device_3._System
 Channel_3._System
 Channel_3.Device_4
 Channel_3.Device_4._System
 Channel_4._System
 Channel_4.Device_5
 Channel_4.Device_5._System
 Channel_4.Device_6
 Channel_4.Device_6._System
Channel4500_Statistics
 Channel4500._System
 Channel4500.Device1
 Channel4500.Device1._System

Item ID	Data Type	Value	Timestamp	Quality	Update Count
Channel4500_Statistics_...	DWord	7	15:00:34:452	Good	9
Channel4500_Statistics_...	DWord	0	14:59:59:670	Good	2
Channel4500_Statistics_...	Boolean	0	14:59:59:670	Good	2
Channel4500_Statistics_...	DWord	2491	15:00:56:483	Good	124
Channel4500_Statistics_...	DWord	42	15:00:56:436	Good	44
Channel4500_Statistics_...	DWord	0	14:59:59:670	Good	2
Channel4500_Statistics_...	DWord	1690	15:00:56:468	Good	110

Date	Time	Event
3/13/2013	3:00:00 PM	Added group 'Channel_4._System' to 'Intellution.IntellutionGatewayOPCServer'.
3/13/2013	3:00:00 PM	Added group 'Channel_4.Device_5._System' to 'Intellution.IntellutionGatewayOPCServer'.
3/13/2013	3:00:00 PM	Added 2 items to group 'Channel_4._System'.
3/13/2013	3:00:00 PM	Added group 'Channel_4.Device_5' to 'Intellution.IntellutionGatewayOPCServer'.
3/13/2013	3:00:00 PM	Added 5 items to group 'Channel_4.Device_5._System'.
3/13/2013	3:00:00 PM	Added group 'Channel_4.Device_6._System' to 'Intellution.IntellutionGatewayOPCServer'.
3/13/2013	3:00:00 PM	Added 3 items to group 'Channel_4.Device_5'.
3/13/2013	3:00:00 PM	Added group 'Channel_4.Device_6' to 'Intellution.IntellutionGatewayOPCServer'.
3/13/2013	3:00:00 PM	Added 5 items to group 'Channel_4.Device_5._System'.
3/13/2013	3:00:00 PM	Added 5 items to group 'Channel_4.Device_6'.
3/13/2013	3:00:00 PM	Added group 'Channel4500_Statistics' to 'Intellution.IntellutionGatewayOPCServer'.
3/13/2013	3:00:00 PM	Added group 'Channel4500._System' to 'Intellution.IntellutionGatewayOPCServer'.
3/13/2013	3:00:00 PM	Added 7 items to group 'Channel4500_Statistics'.
3/13/2013	3:00:00 PM	Added group 'Channel4500.Device1._System' to 'Intellution.IntellutionGatewayOPCServer'.
3/13/2013	3:00:00 PM	Added 14 items to group 'Channel4500._System'.
3/13/2013	3:00:00 PM	Added group 'Channel4500.Device1' to 'Intellution.IntellutionGatewayOPCServer'.

Ready Item Count: 172

OPC Quick Client - Untitled *

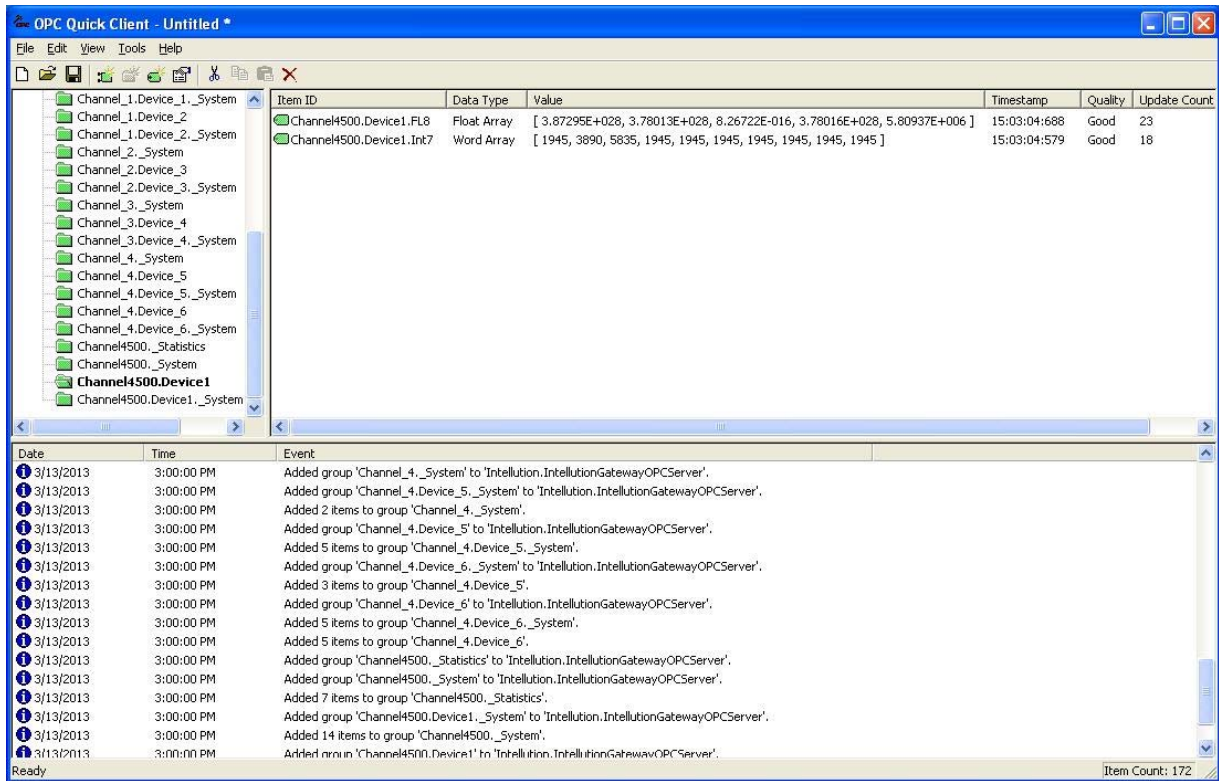
File Edit View Tools Help

Channel_1.Device1._System
 Channel_1.Device_2
 Channel_1.Device_2._System
 Channel_2._System
 Channel_2.Device_3
 Channel_2.Device_3._System
 Channel_3._System
 Channel_3.Device_4
 Channel_3.Device_4._System
 Channel_4._System
 Channel_4.Device_5
 Channel_4.Device_5._System
 Channel_4.Device_6
 Channel_4.Device_6._System
 Channel4500_Statistics
Channel4500._System
 Channel4500.Device1
 Channel4500.Device1._System

Item ID	Data Type	Value	Timestamp	Quality	Update Count
Channel4500._System_...A...	String	Default;NVIDIA nForce...	14:59:59:670	Good	2
Channel4500._System_...B...	Long	19200	14:59:59:670	Good	2
Channel4500._System_...C...	String	Ethernet Encapsulation	14:59:59:670	Good	2
Channel4500._System_...D...	Long	8	14:59:59:670	Good	2
Channel4500._System_...E...	Boolean	1	14:59:59:670	Good	2
Channel4500._System_...F...	String	None	14:59:59:670	Good	2
Channel4500._System_...N...	String	Default	14:59:59:670	Good	2
Channel4500._System_...P...	String	None	14:59:59:670	Good	2
Channel4500._System_...R...	Boolean	1	14:59:59:670	Good	2
Channel4500._System_...R...	Long	10	14:59:59:670	Good	2
Channel4500._System_...R...	Long	10	14:59:59:670	Good	2
Channel4500._System_...R...	Long	10	14:59:59:670	Good	2
Channel4500._System_...S...	Long	1	14:59:59:670	Good	2
Channel4500._System_...T...	Long	10	14:59:59:670	Good	2

Date	Time	Event
3/13/2013	3:00:00 PM	Added group 'Channel_4._System' to 'Intellution.IntellutionGatewayOPCServer'.
3/13/2013	3:00:00 PM	Added group 'Channel_4.Device_5._System' to 'Intellution.IntellutionGatewayOPCServer'.
3/13/2013	3:00:00 PM	Added 2 items to group 'Channel_4._System'.
3/13/2013	3:00:00 PM	Added group 'Channel_4.Device_5' to 'Intellution.IntellutionGatewayOPCServer'.
3/13/2013	3:00:00 PM	Added 5 items to group 'Channel_4.Device_5._System'.
3/13/2013	3:00:00 PM	Added group 'Channel_4.Device_6._System' to 'Intellution.IntellutionGatewayOPCServer'.
3/13/2013	3:00:00 PM	Added 3 items to group 'Channel_4.Device_5'.
3/13/2013	3:00:00 PM	Added group 'Channel_4.Device_6' to 'Intellution.IntellutionGatewayOPCServer'.
3/13/2013	3:00:00 PM	Added 5 items to group 'Channel_4.Device_5._System'.
3/13/2013	3:00:00 PM	Added 5 items to group 'Channel_4.Device_6'.
3/13/2013	3:00:00 PM	Added group 'Channel4500_Statistics' to 'Intellution.IntellutionGatewayOPCServer'.
3/13/2013	3:00:00 PM	Added group 'Channel4500._System' to 'Intellution.IntellutionGatewayOPCServer'.
3/13/2013	3:00:00 PM	Added 7 items to group 'Channel4500_Statistics'.
3/13/2013	3:00:00 PM	Added group 'Channel4500.Device1._System' to 'Intellution.IntellutionGatewayOPCServer'.
3/13/2013	3:00:00 PM	Added 14 items to group 'Channel4500._System'.
3/13/2013	3:00:00 PM	Added group 'Channel4500.Device1' to 'Intellution.IntellutionGatewayOPCServer'.

Ready Item Count: 172



For DL4500 STD Telnet settings please see in the link below or just search on YouTube DL4500.

http://www.youtube.com/watch?v=CiM_fg98drs