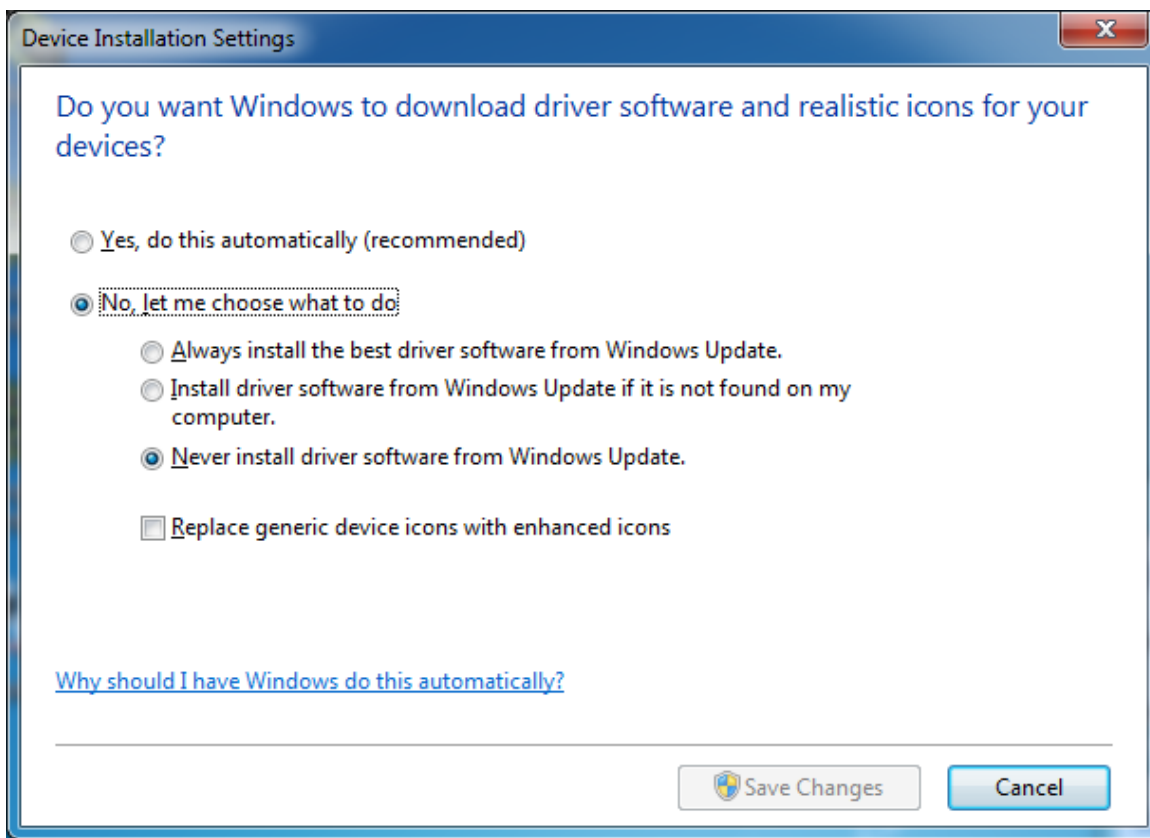
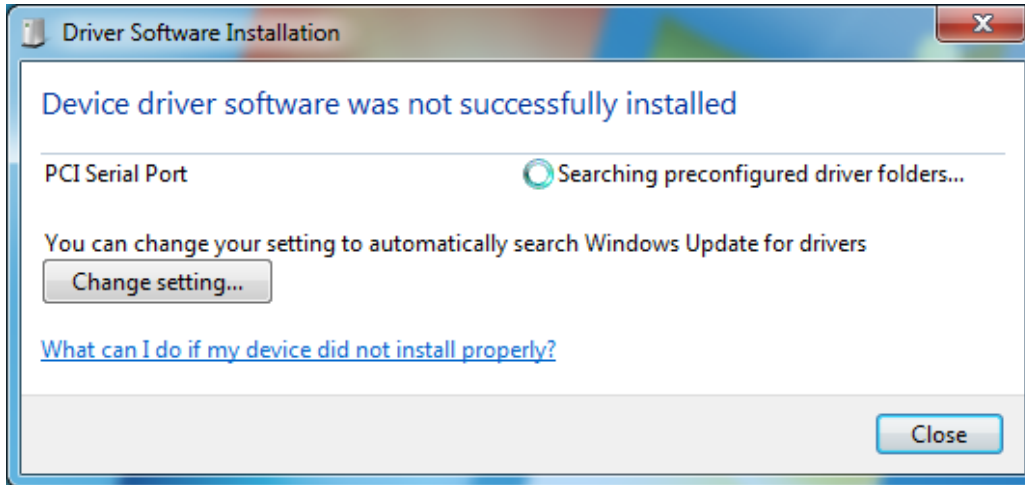


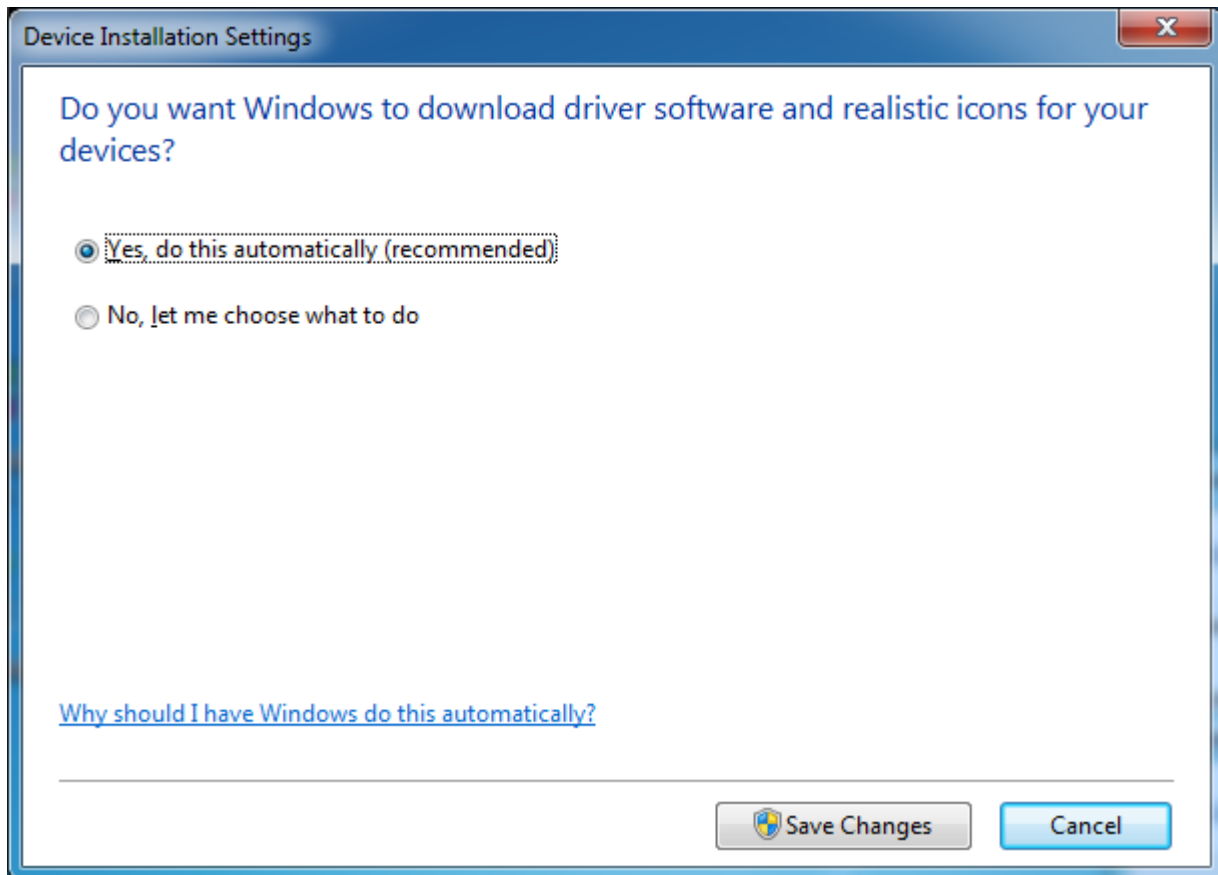
Equustek DLPCIe (Allen BradleyDF1 to DH+ / DH485) PCI Express Bus Card with Windows 7

In case Windows 7 does not successfully install the DLPCIe driver like what you see in the following screen shots.

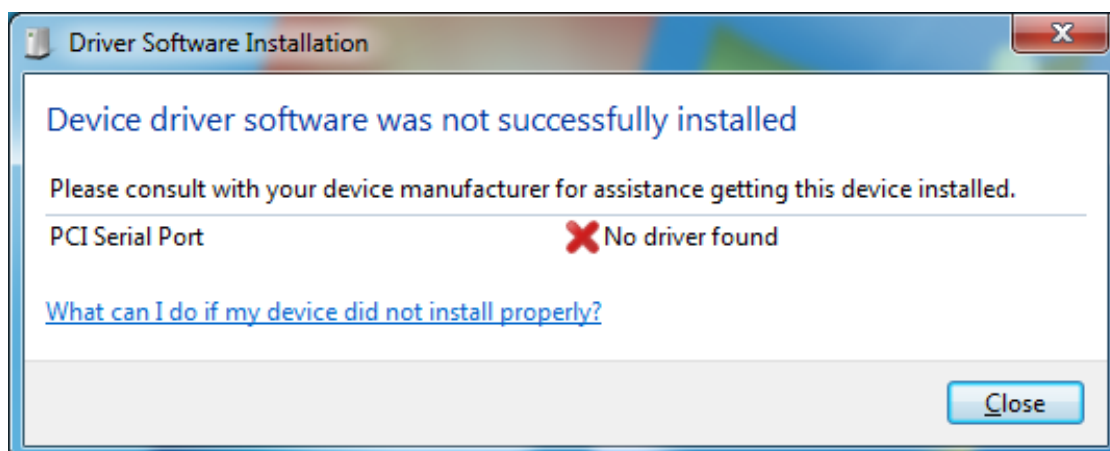
Click on Change setting..



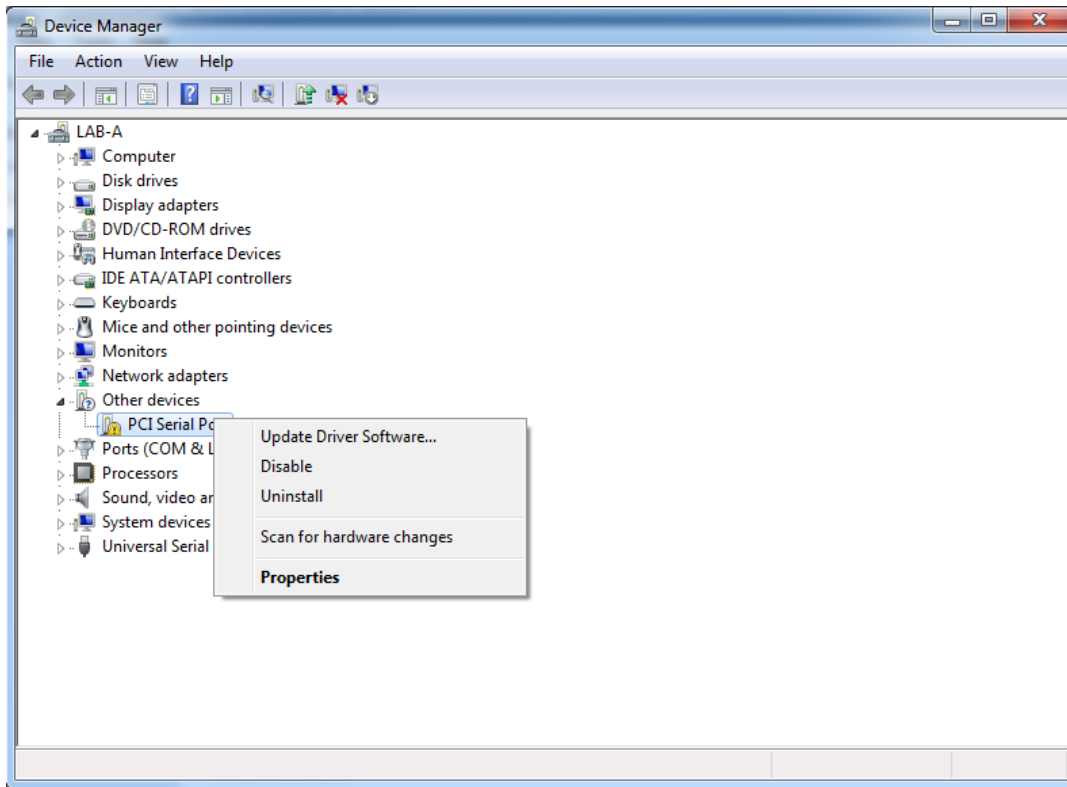
Change it to Automatic update.



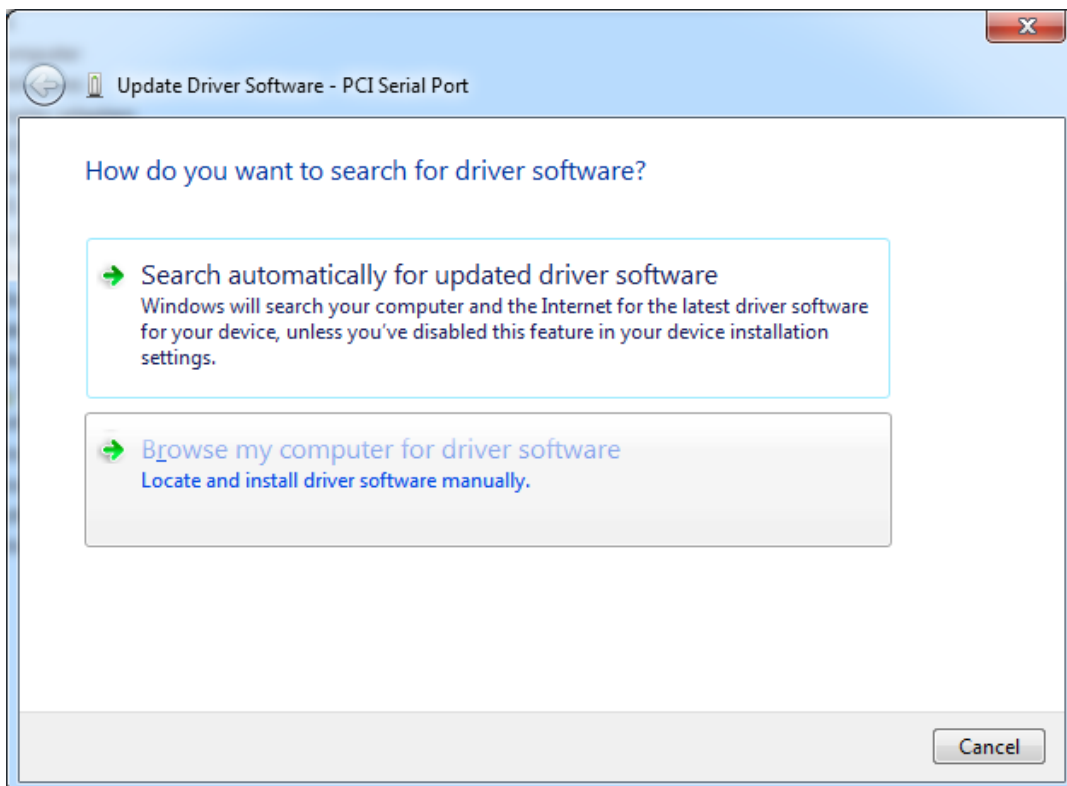
And if it still does not find the driver like what you see below.



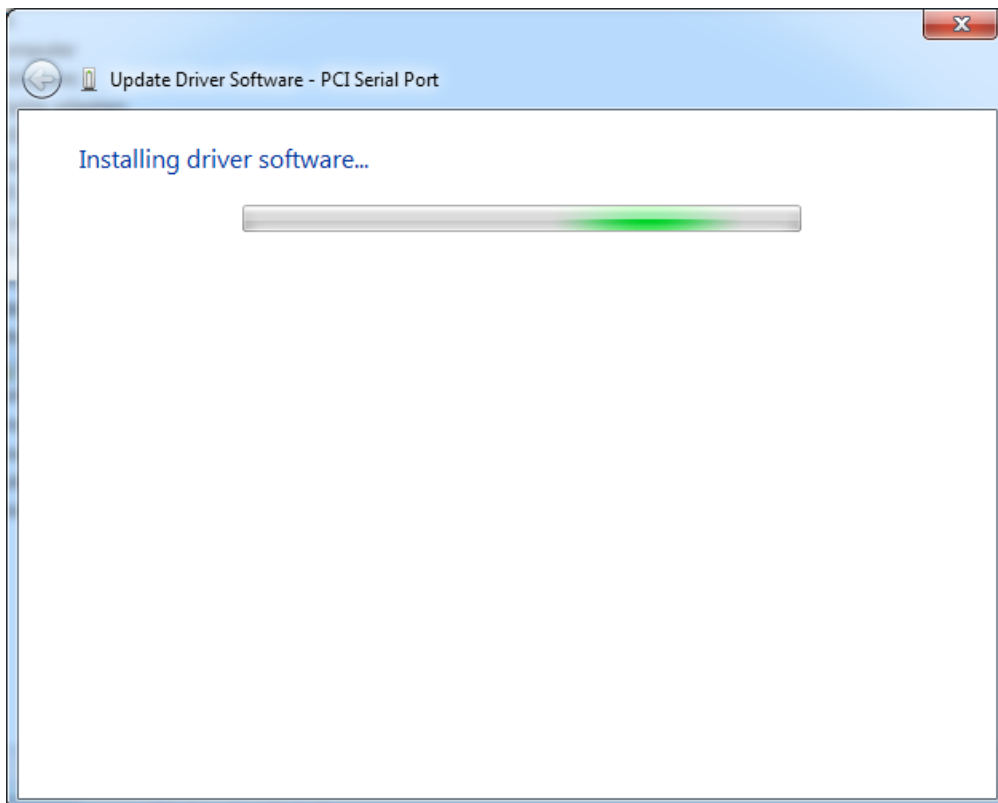
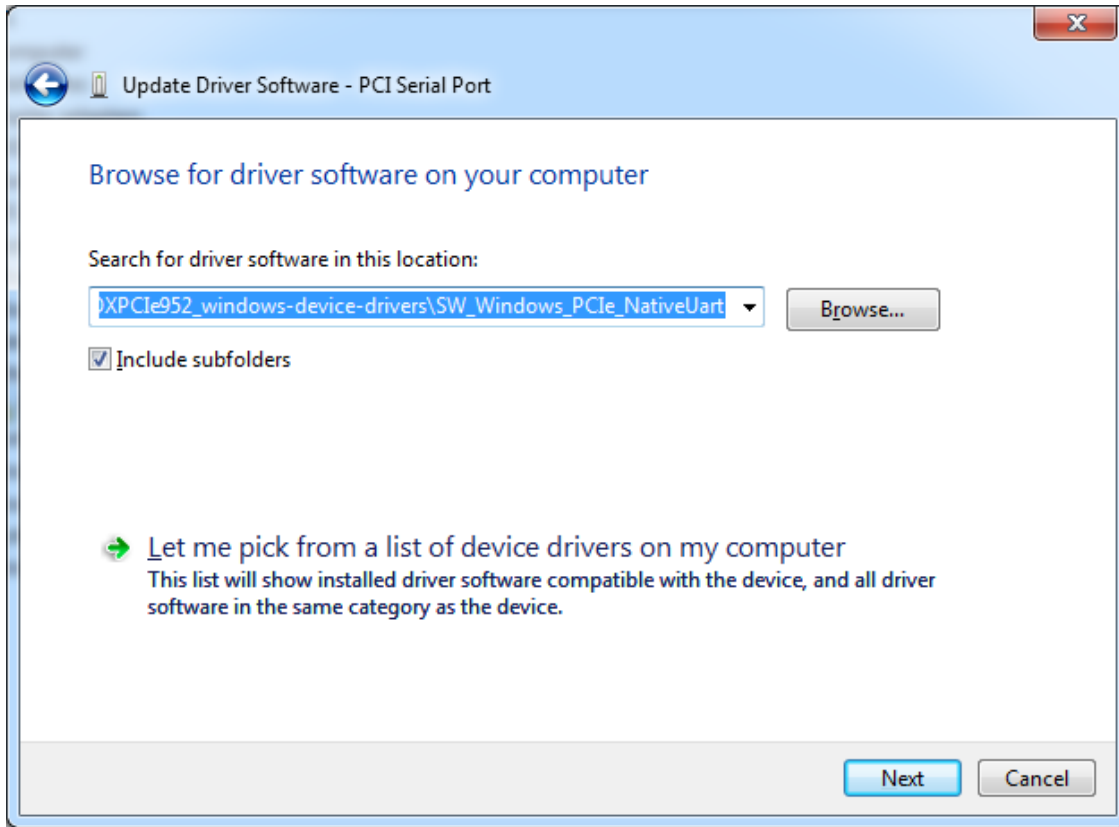
Then go to your device manager and look under ports and LPTs and click on update driver software.



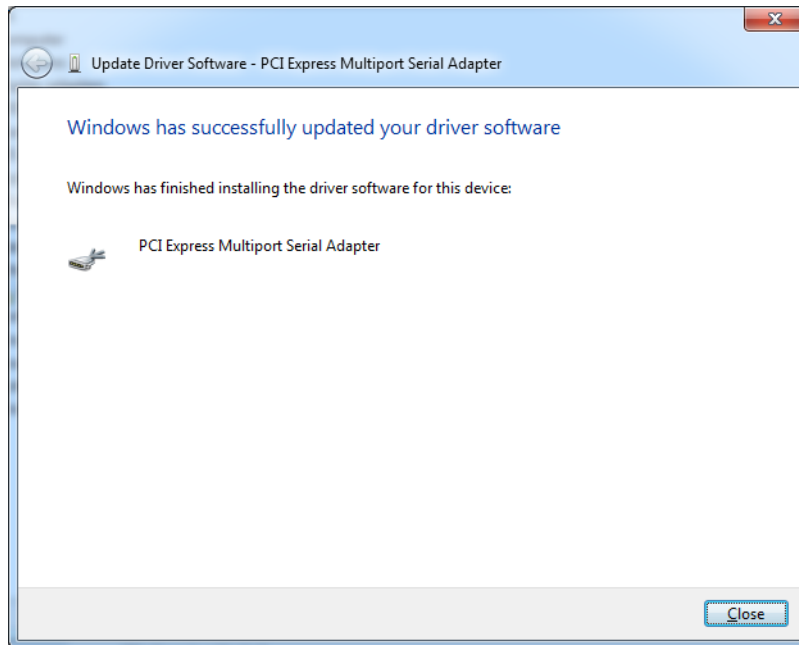
Choose Browse my computer.



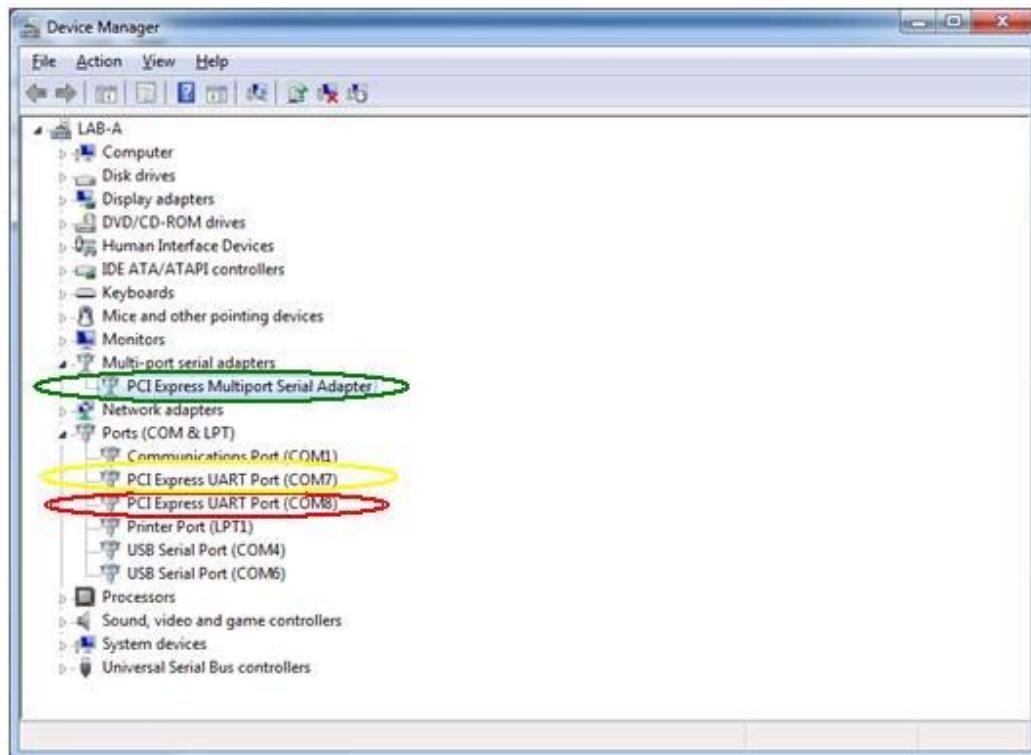
Browse to where the SW_Windows_PClE_NativeUart folder is on your CD and click on Next



Wait until you see



The two serial port numbers will differ from one PC to another and you can change the number to your desired available one.



That will complete the installation of the PCI Express driver for the card.

please note that in Win7 the second port is used for setting up the DF1 drive, later on.