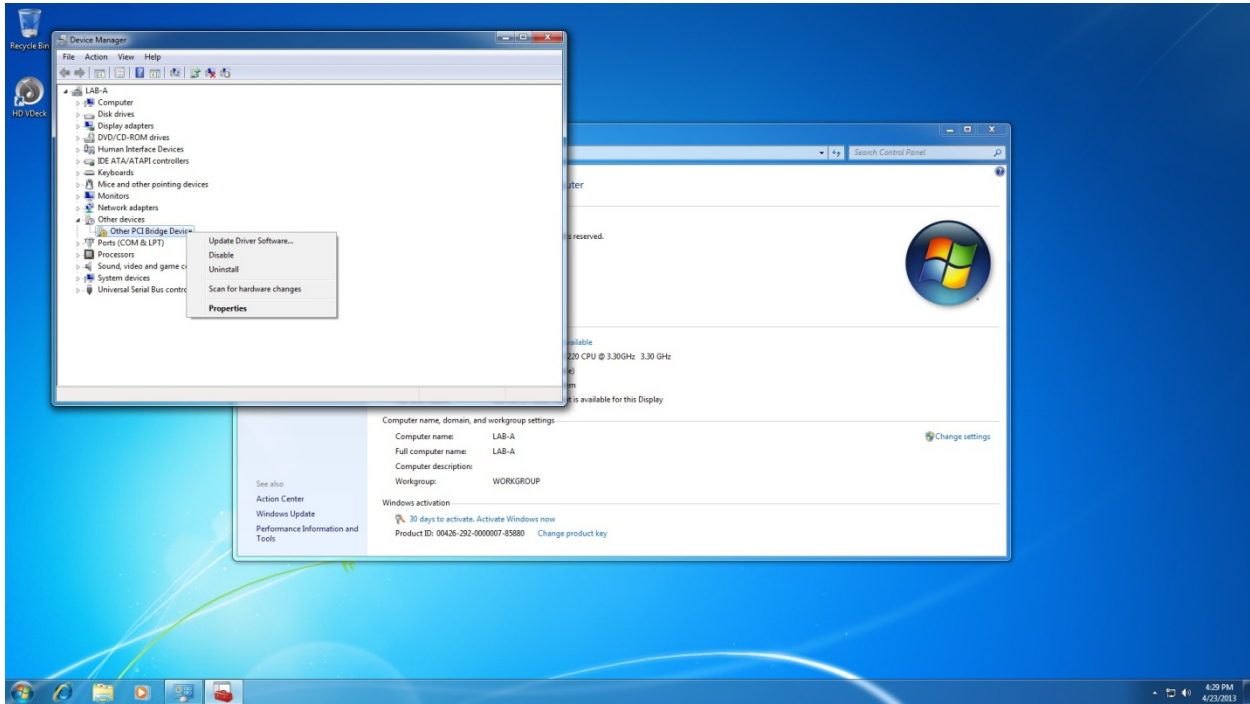
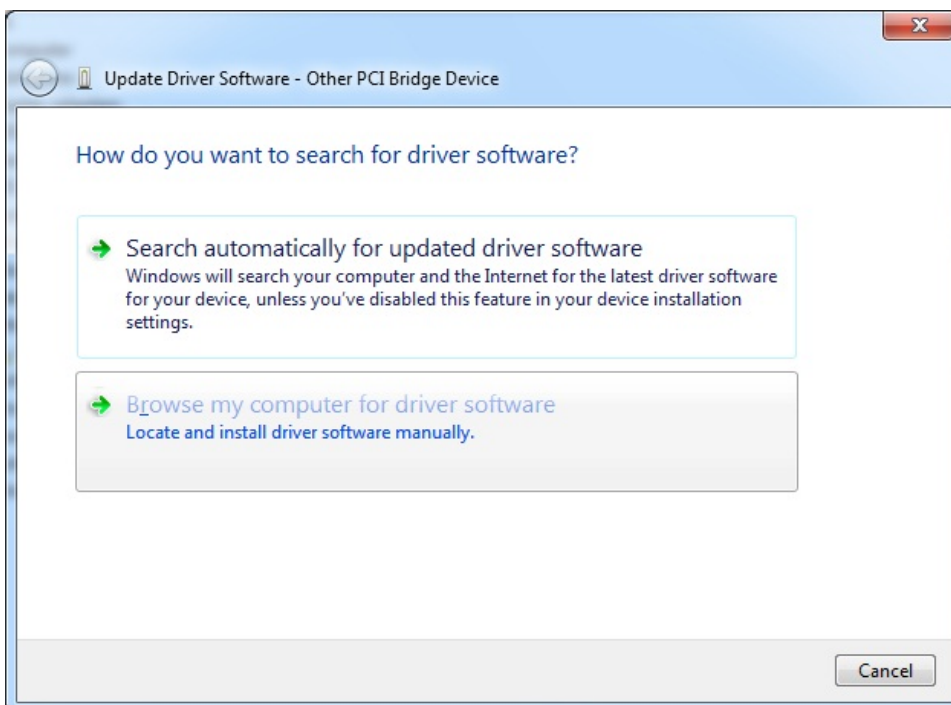


DLPCI Windows 7 32 bit driver installation.

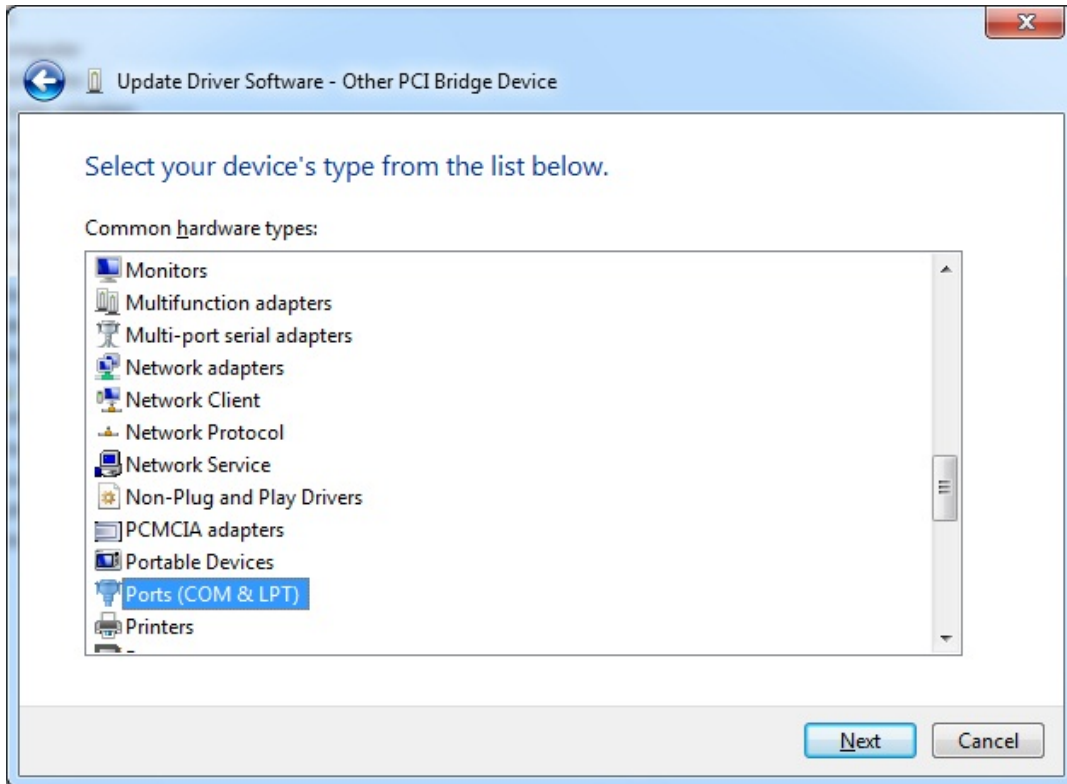
After the DLCPI is installed in the PC the driver installation will fail, so you need to go to device manager you will find the failed device with yellow exclamation mark(Other PCI bridge) as shown below.



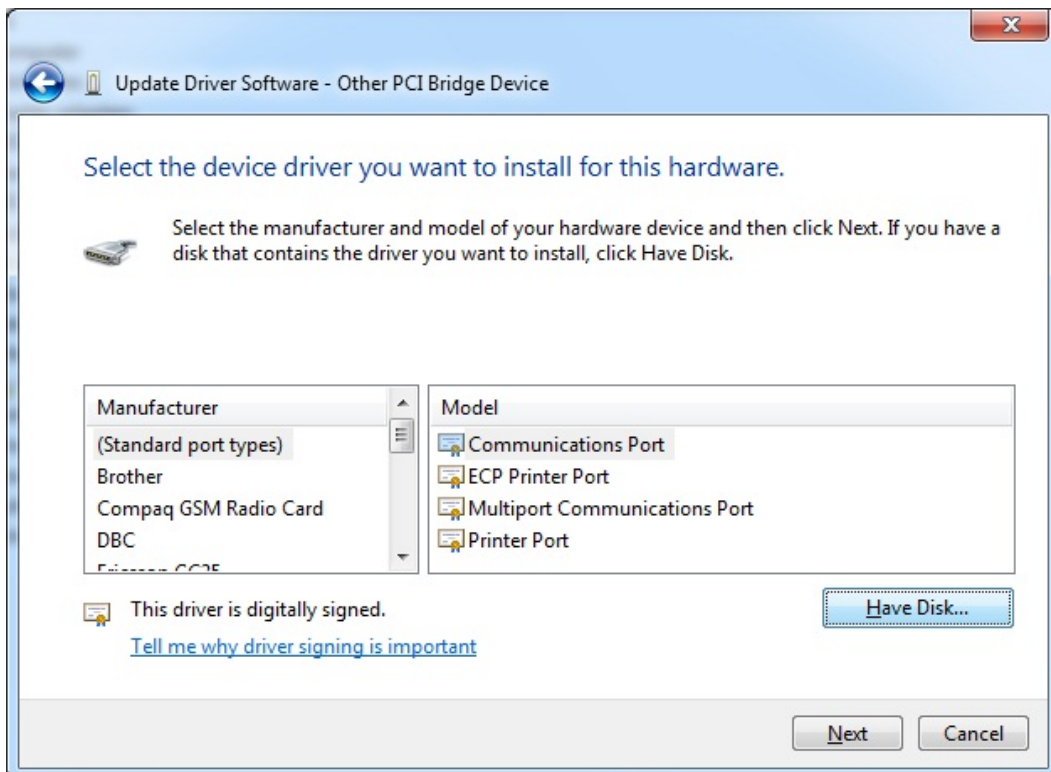
Right click on Other PCI bridge device and click on update driver, then click on Browse my computer for driver software.



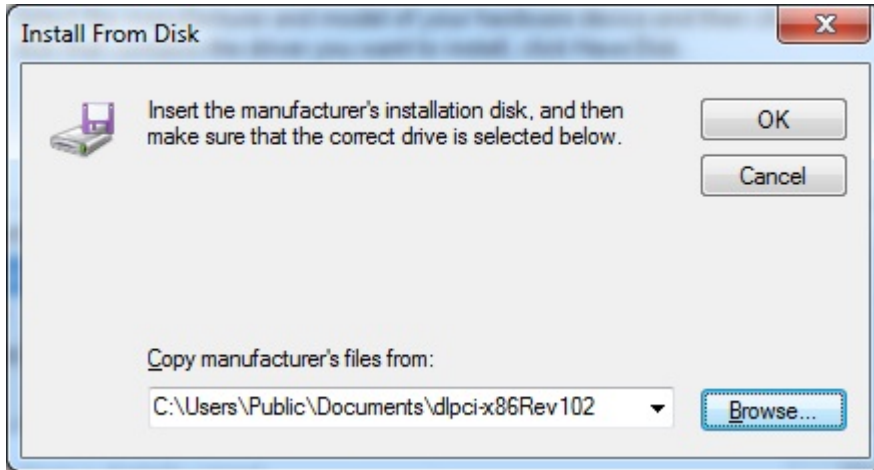
It will come up with the windows shown below scroll down, select Ports(COM & LPT) and click Next.



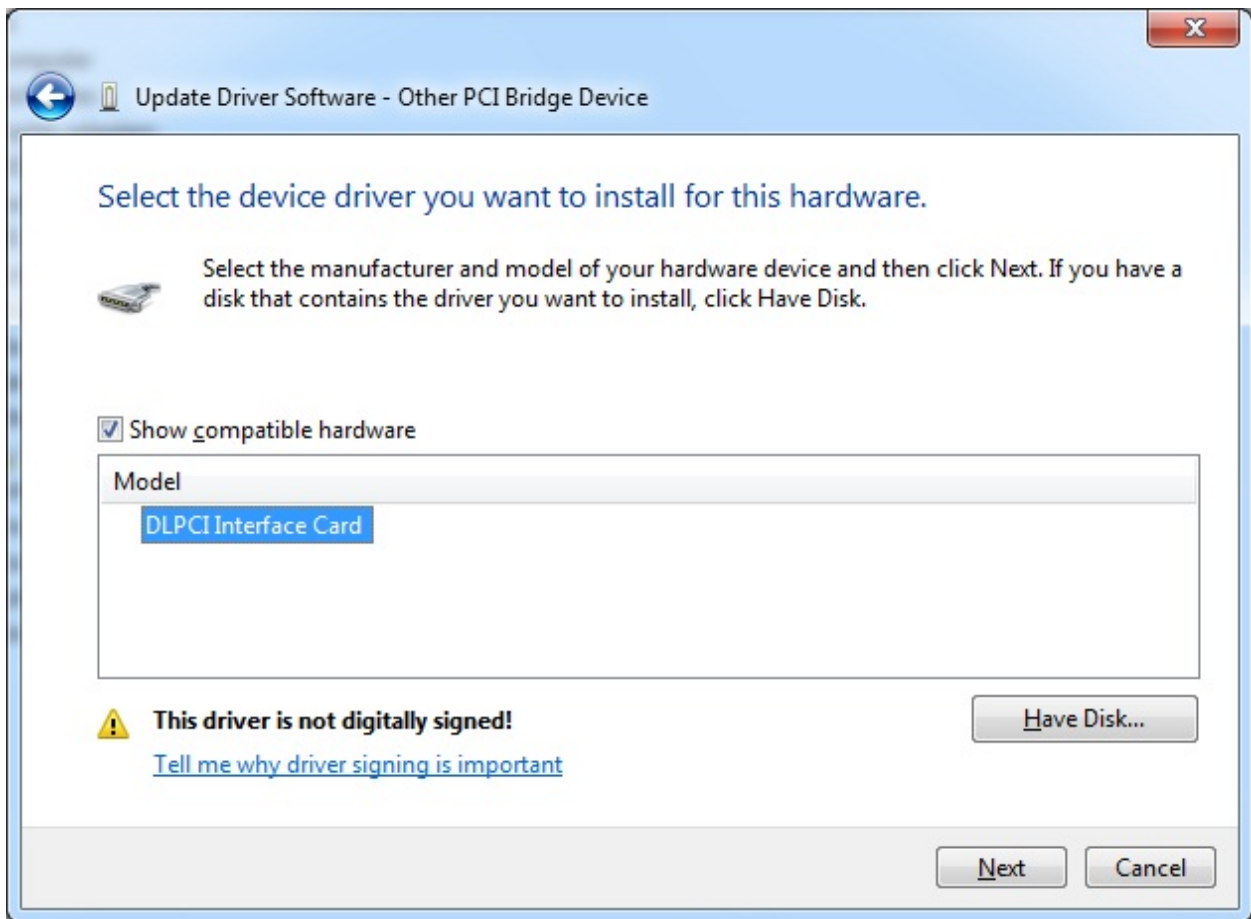
From the window shown below click on Have Disk...



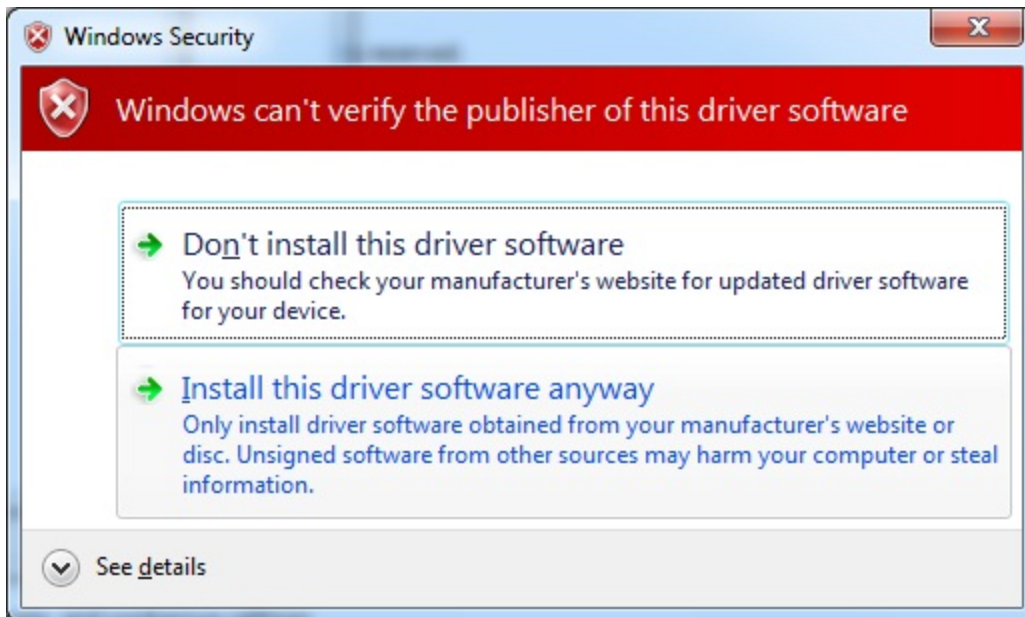
It will come up with a window where you can browse to the location of the driver file saved on your hard drive or CD.



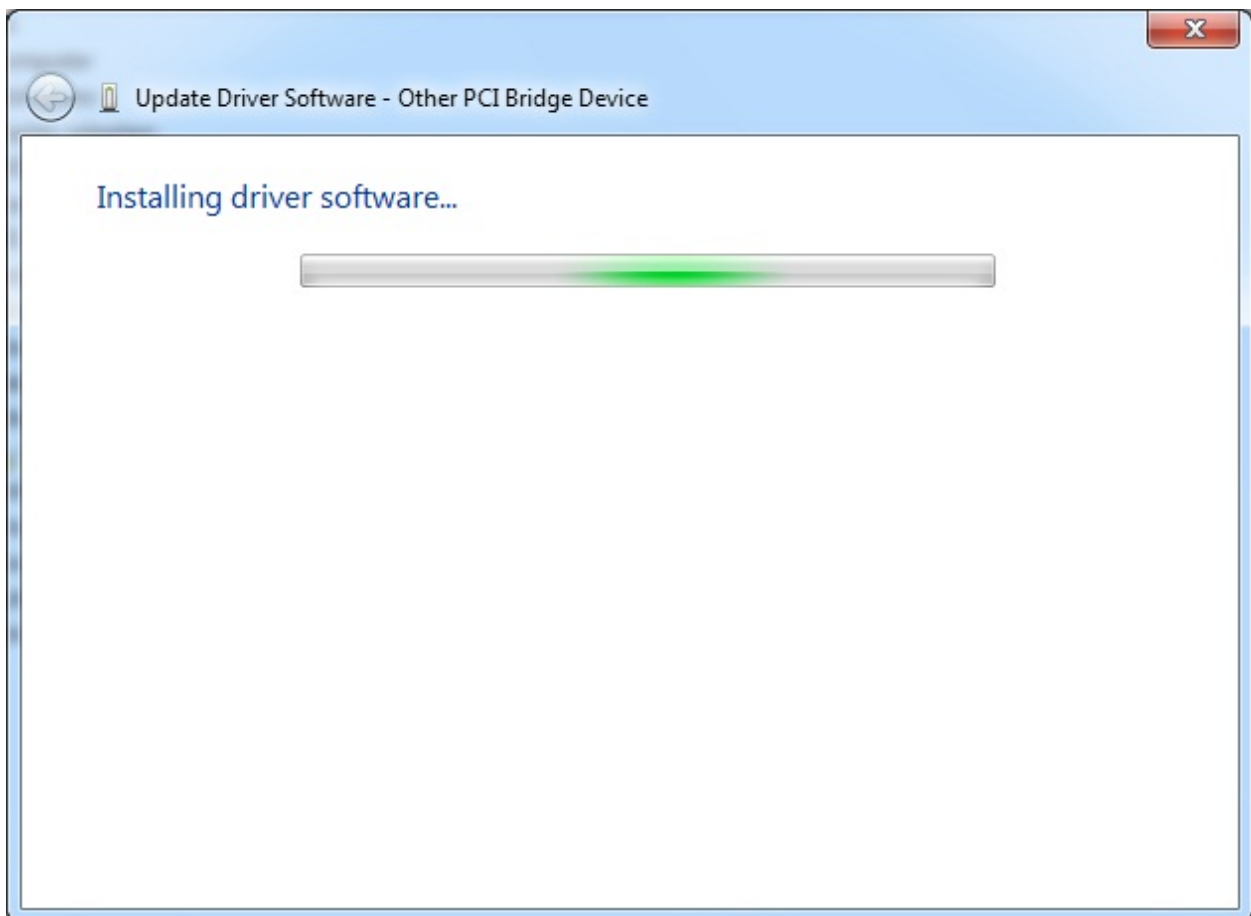
Here it will show the DLPCI Interface card high light it and click Next.



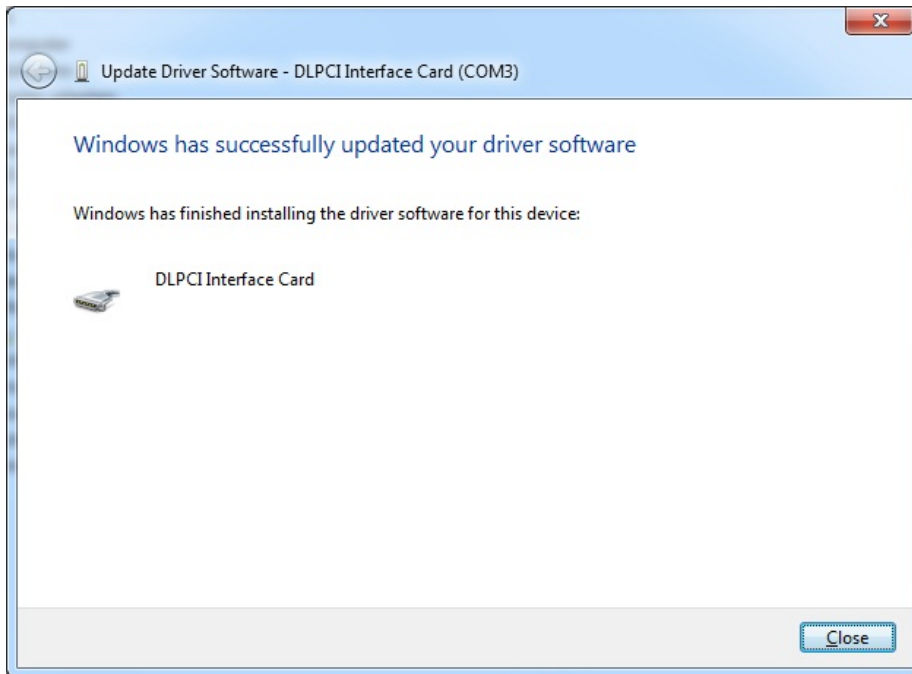
To continue installing the driver click on Install this driver software anyway as shown below.



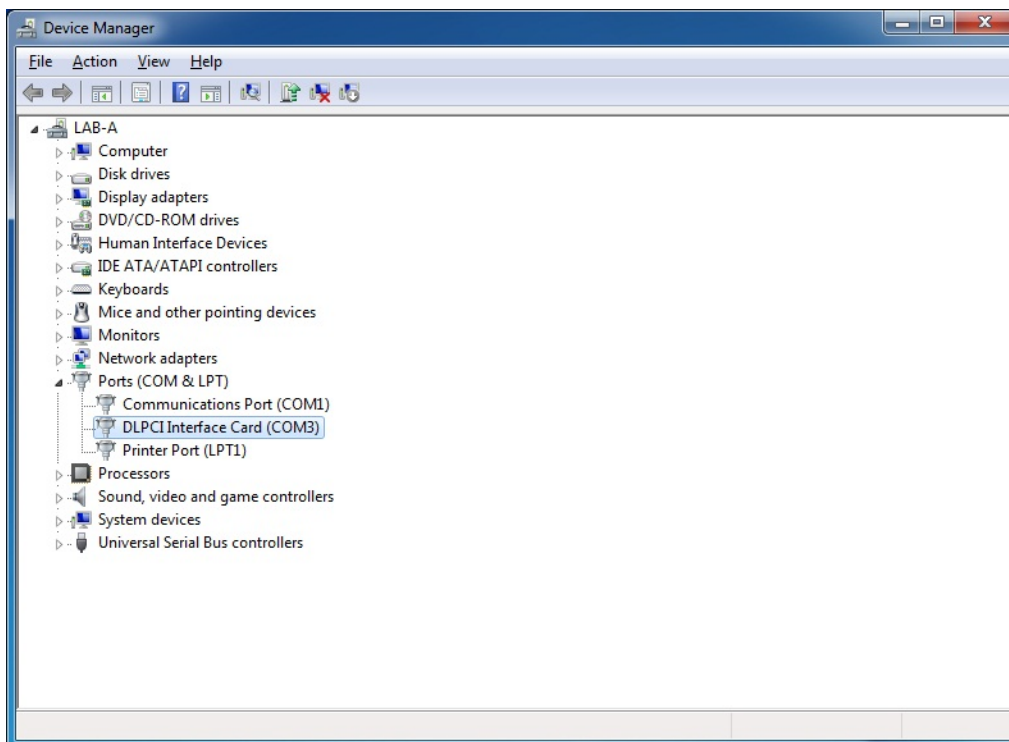
Wait for the driver to complete installation.



Here you will see the successfully completed message.



Go back to your Device Manager under Ports (COM & LPT) you should see the DLPCI Interface card with specific COM port number that you will use with your Allen Bradley DF1 driver.



Now you can restart your PC and if you encounter any issue just shut down the PC and move the DLPCI to another PCI slot it will resolve that issue if any exists.