

To configure EQ7000 first start the EQ32 configuration software, and select EQ7000.

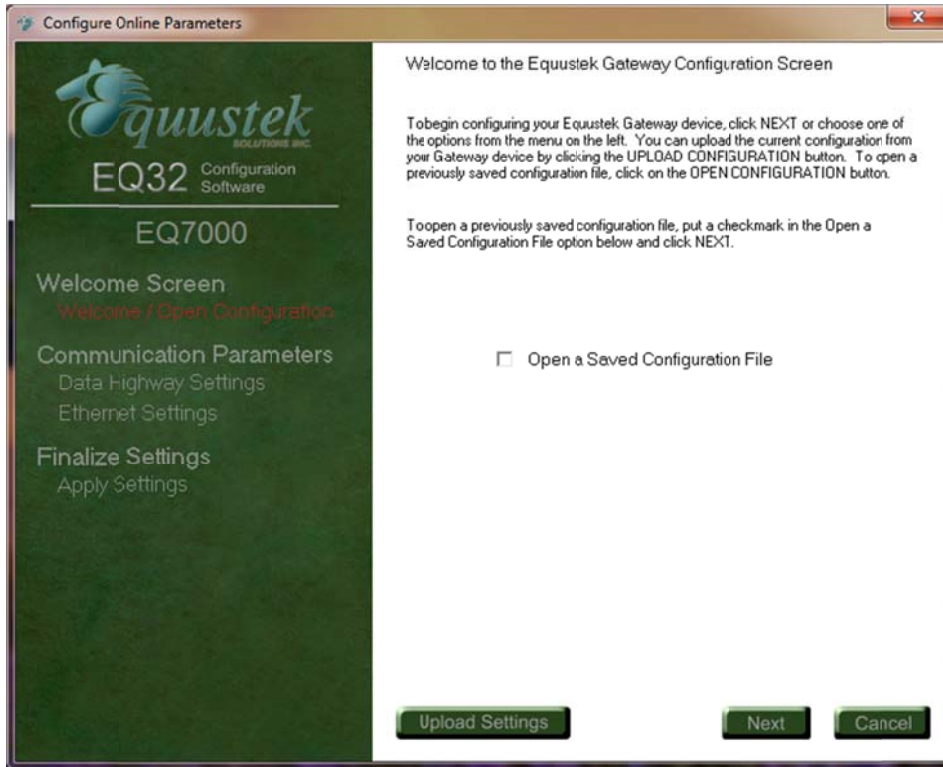


Select the serial port that the USB occupies under your Device Manager.

After selecting the right serial port, click on Configure.



Click on Next



Select your network Mode DH+ or DH485.



Select a unique node address for the EQ7000.



Select the network speed.



Click on Next.

The screenshot shows a window titled "Configure Online Parameters" with a sub-header "Data Highway Communication Settings". On the left is a dark green sidebar with the Quustek logo and navigation options: "EQ32 Configuration Software", "EQ7000", "Welcome Screen", "Communication Parameters" (with "Data Highway Settings" highlighted), and "Finalize Settings". The main area contains three settings: "Network Type" set to "DH+", "Node Address" set to "13" with "Octal" as the unit, and "Network Speed" set to "57.6" with "kBaud" as the unit. At the bottom are four buttons: "Upload Settings", "Back", "Next", and "Cancel".

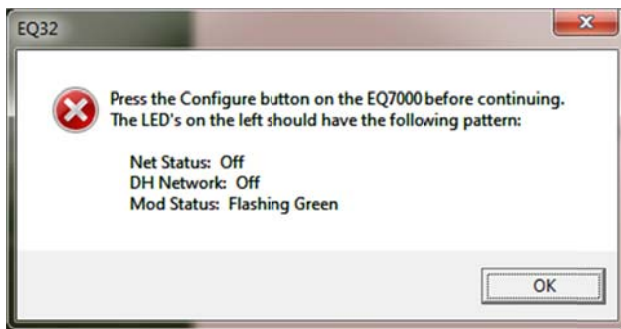
Enter an IP address for the EQ7000, and the Net mask as well as the Gateway.

The screenshot shows a window titled "Configure Online Parameters" with a sub-header "Ethernet Communication Settings". The sidebar is identical to the previous window, but "Ethernet Settings" is highlighted under "Communication Parameters". The main area contains five settings: "DHCP" set to "Disabled", "IP Address" set to "192.168.2.171", "Subnet Mask" set to "255.255.255.0", "Default Gateway" set to "192.168.2.1", and "Speed" set to "Auto Detect". The "Socket Timeout" is set to "30" with a unit of "s". At the bottom are four buttons: "Upload Settings", "Back", "Next", and "Cancel".

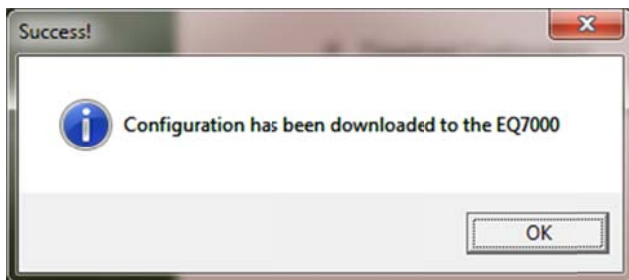
Click on finish.



Press on the Configure push button switch on the right hand side of the unit and click OK.



Once you have downloaded OK to the EQ7000 you should get the Success message shown below click on OK



Click on Ok and close the EQ32 program.

Press the RESET push button on the left hand side of the unit to put it in online Mode.