

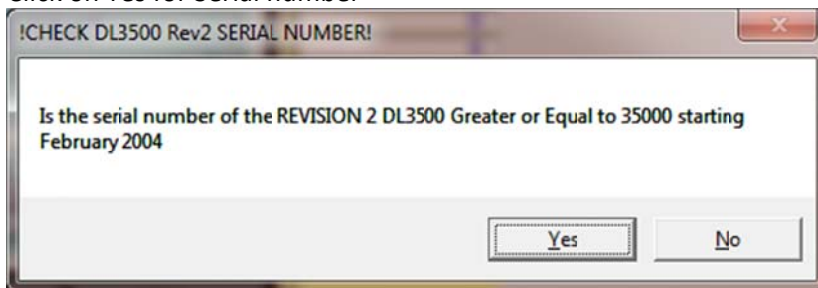
To put the DL3500 in offline mode power on and press the configure push button switch on the right hand side of the unit, then connect it to your PC either through a null MODEM cable to the RS232 or use a USB cable, please make sure that only one of them is connected not both, since they are both multiplexed to one Channel and that nothing is connected to the 5 pin connector, also make sure that no other application is communicating to the DL3500 on the serial side, here CHA and CHC LEDs will be RED while CHB LED OFF and Power LED solid Green.



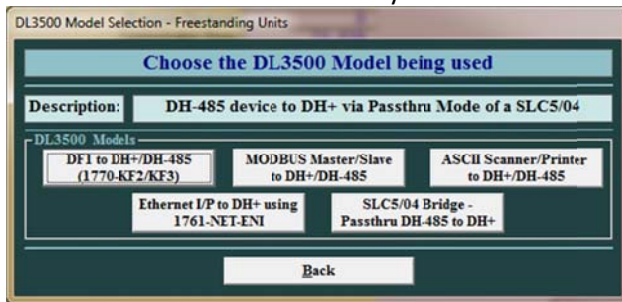
1- Start DL32 configuration software and Select DL3500 Models.



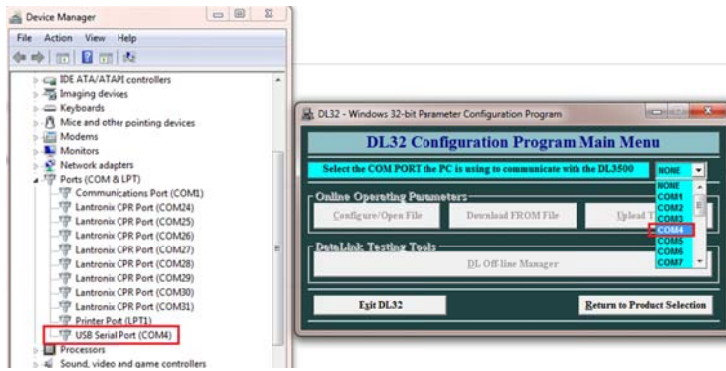
Click on Yes for Serial number



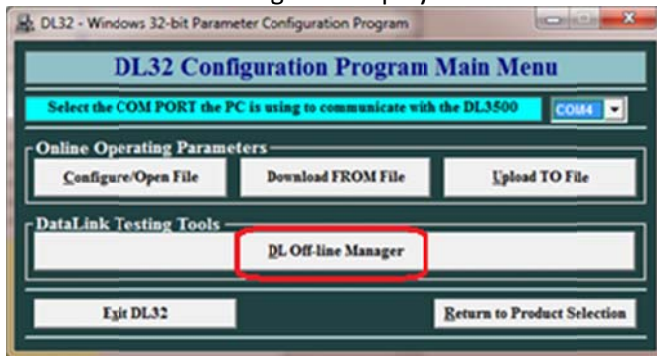
Click on the DL3500 Model that you have.



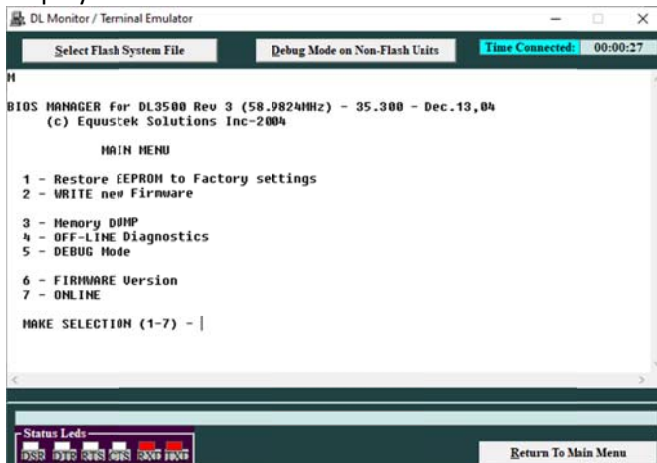
Select the comport and if you are not using the RS232 connection, find the USB Com Port the PC is using to communicate with the DL3500, look under device manager and select it from the drop menu in DL32 similar to screen shots below.



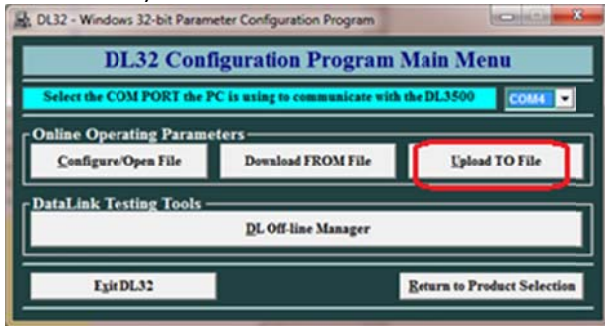
Click on Off-line Manager to display the offline menu.



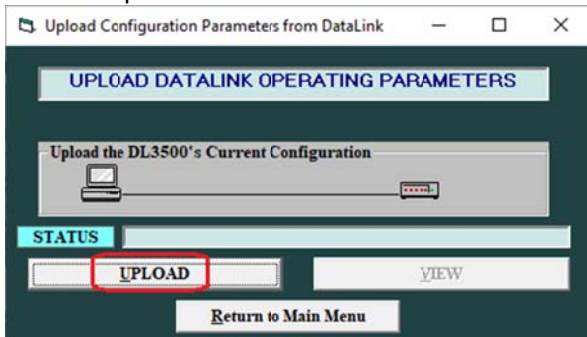
Here you should see the offline manager Menu as shown below, if you type 6 that should show and display the firmware version.



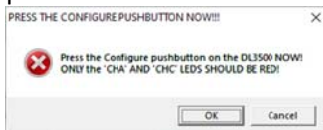
- 2- To Upload the existing configuration, click on (Return To Main Menu), then click on (Upload To File)



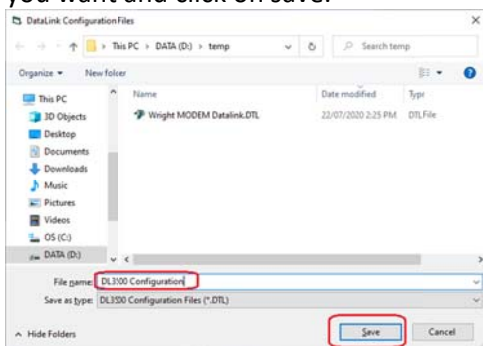
Click on Upload



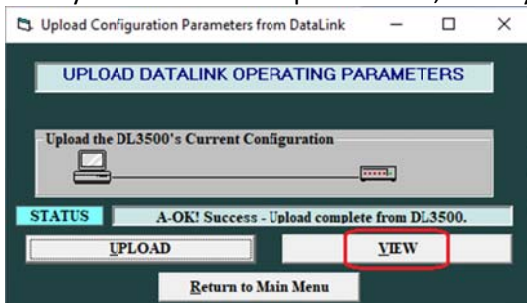
It will come with PRESS THE CONFIGURE PUSHBUTTON NOW message, the pushbutton switch was pressed earlier so either click on OK or you can press the bush button again if wouldn't matter.



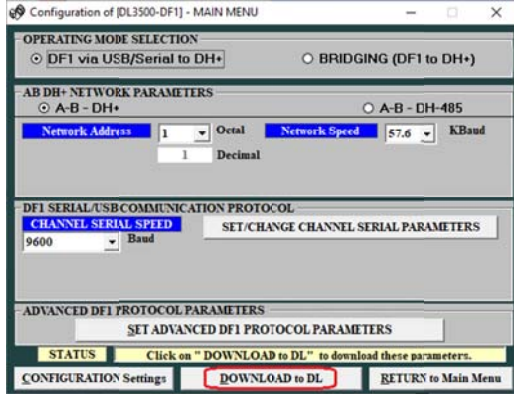
It will come up with a windows where you can save the uploaded configuration file, type in the name you want and click on save.



Here you can view the uploaded file, when you click on VIEW.



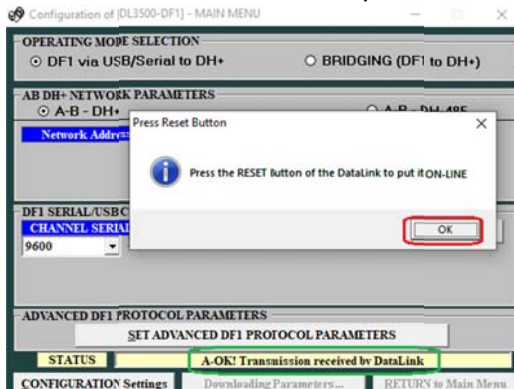
In this example here we are showing the DL3500-DF1/DH+, in yours it could be different depending on the DL3500 MODEL, do the necessary changes then click on DOWNLOAD to DL.



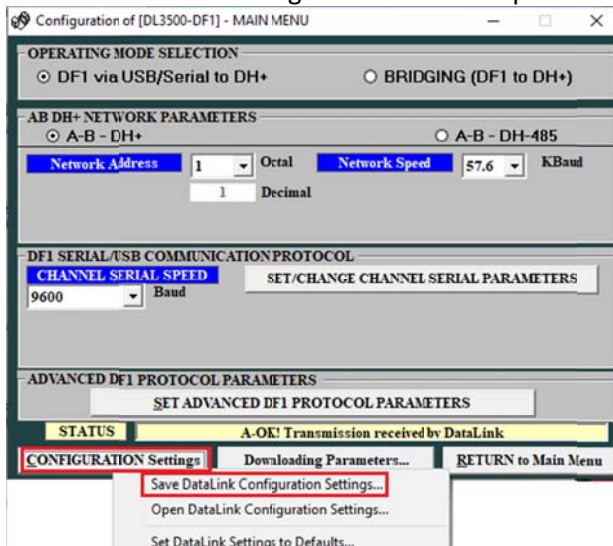
Here it will again come with the PRESS THE CONFIGURE PUSHBUTTON NOW message, please Press it and click on OK.



Now after a successful download you will get the Press RESET Button message and you will notice the A-OK Transmission received by DataLink in the main Menu, press the RESET pushbutton and click on OK.

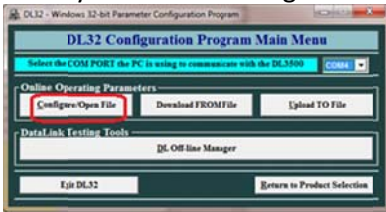


In case you want to save the configuration file after you made changes for future use click on CONFIGURATION Setting and from the drop menu click on Save DataLink Configuration Settings.

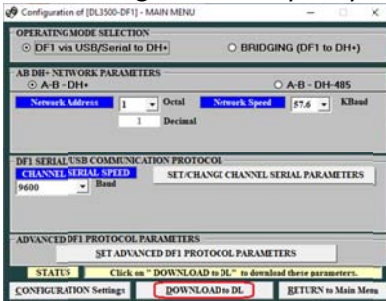




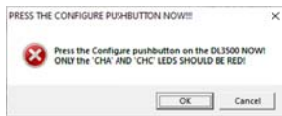
3- If you need to configure a new unit Click on (Configure/Open File).



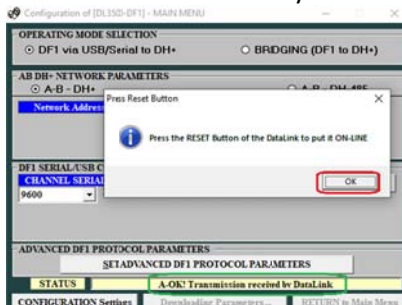
Do all changes necessary for your application and click on (DOWNLOAD to DL).



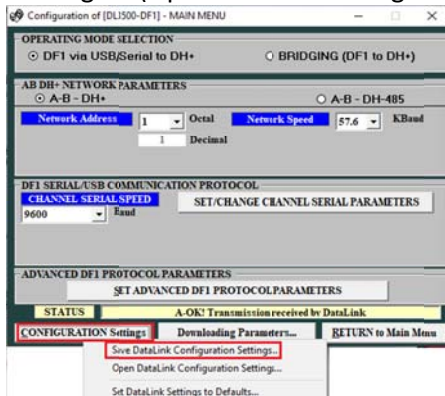
Here it will come with the PRESS THE CONFIGURE PUSHBUTTON NOW message, please Press it and click on OK.



After a successful download you will get the Press RESET Button message and you will notice the A-OK Transmission received by DataLink in the main Menu, press the RESET pushbutton and click on OK.



In case you want to save the configuration file for future use click on CONFIGURATION Setting and from the drop menu click on (Save DataLink Configuration Settings), you can use that file in the future by clicking on (Open DataLink Configuration Setting...)



Close the DL32 configuration software, your unit is ready for online use.