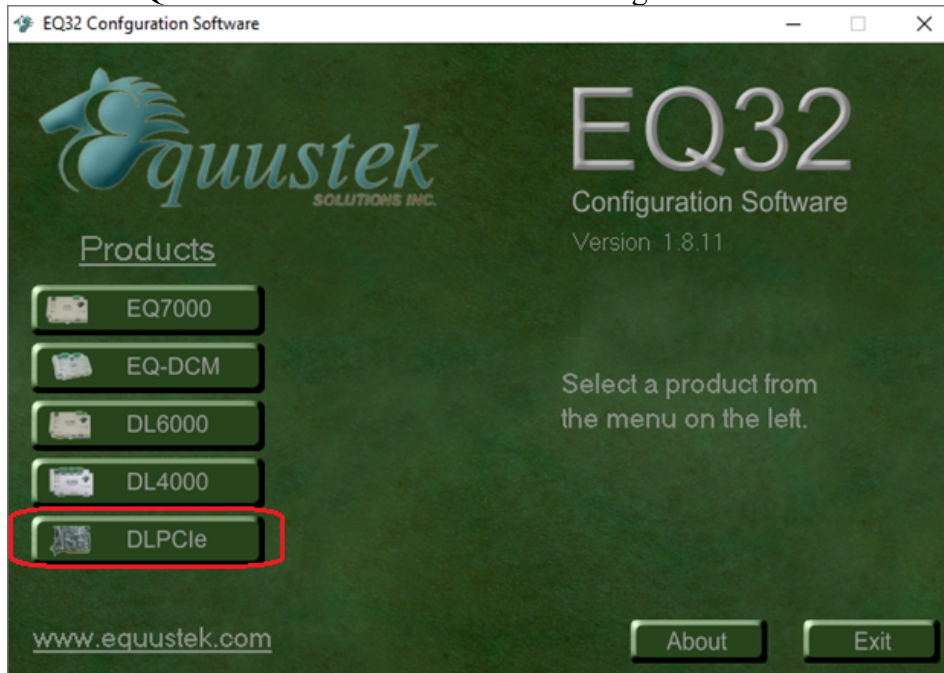


## How to Configure the DLPCI/104 DF1 to DH485

To configure the DLPCI/104 DF1 to DH485 you need the EQ32 configuration software installed. Download the latest version from Equustek website under download section. Once completed the download unzip the file and run setup follow the instruction until installation is completed.

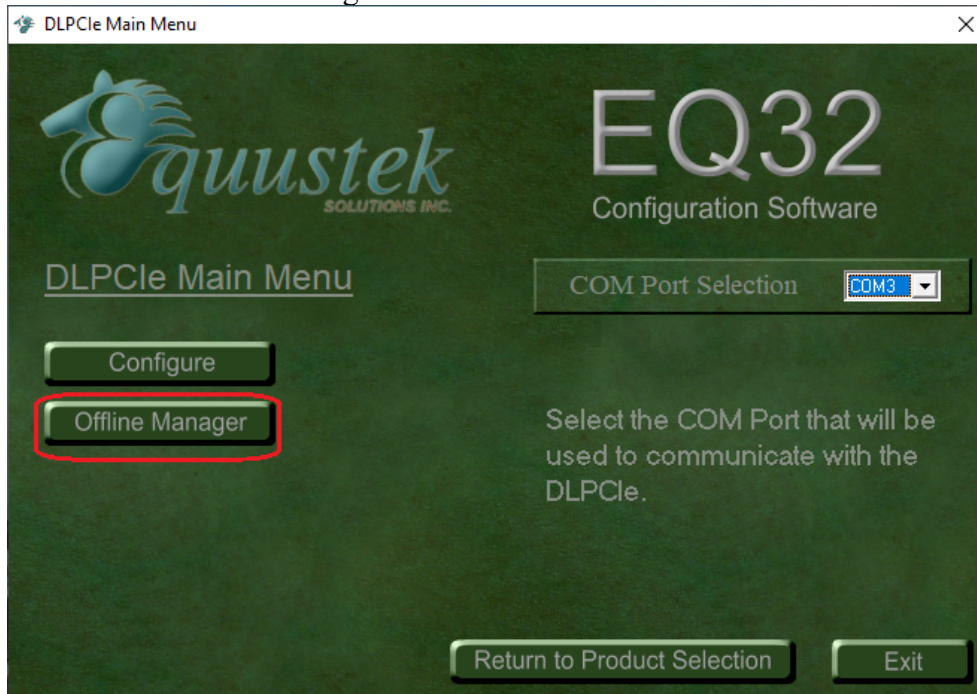
Start the EQ32 & Click on DLPCIe to start configuration of the DLPCI/104 card.



From the EQ32 Main Menu, select the COM Port that has been assigned to the DLPCI/104. Or if you are using the 3pin RS232 connection to an external PC then select that PC port.



Click on DL Offline manager



Hit enter key, the menu will be displayed again, that confirms that your PC is communicating with the card and you can see the menu shown below.

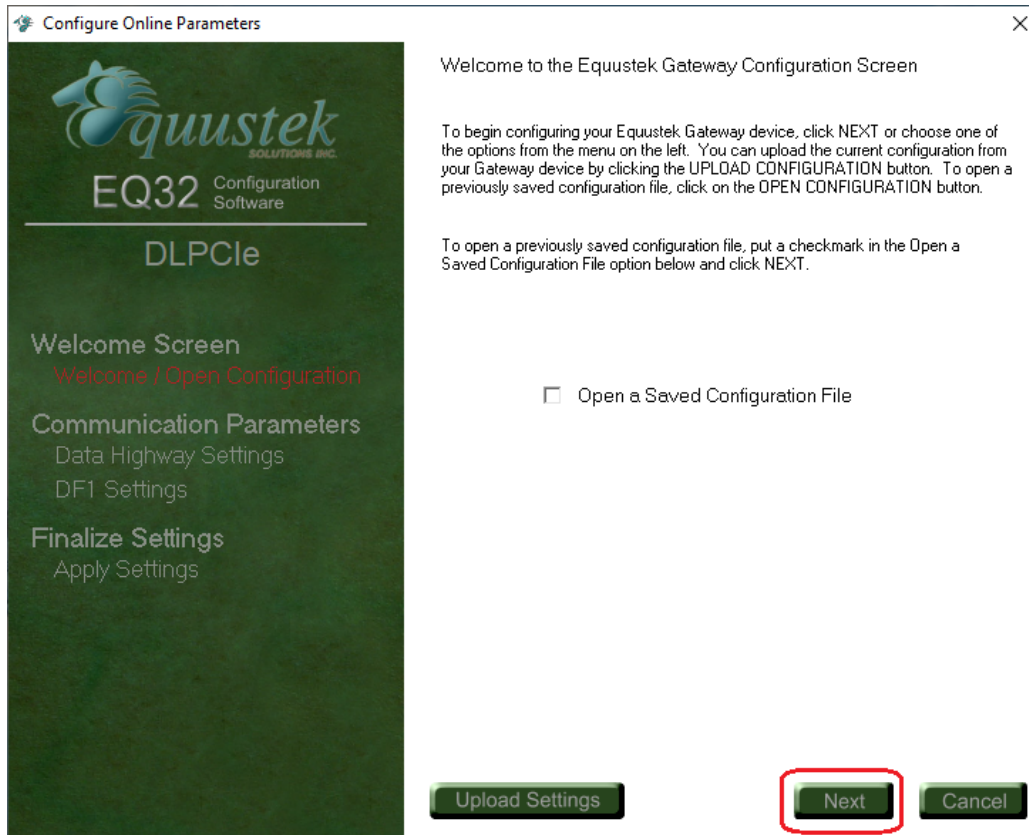
Click on Close to return to the main menu.



Click the Configure button.

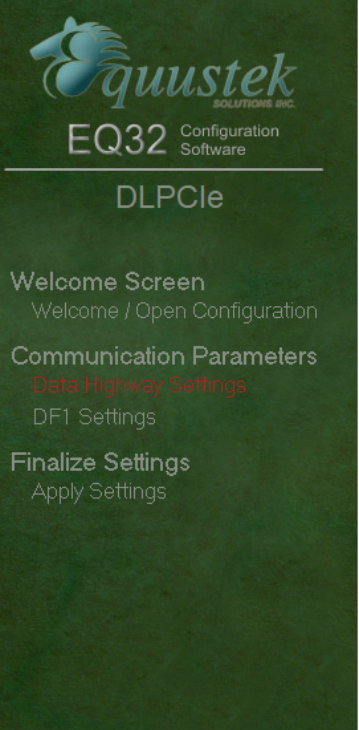


Click On Next.



Select Network Type depending on your card, here will continue with a DH485 Network.

Configure Online Parameters



### DH+ Communication Settings

**Network Mode**

DH+  DH485

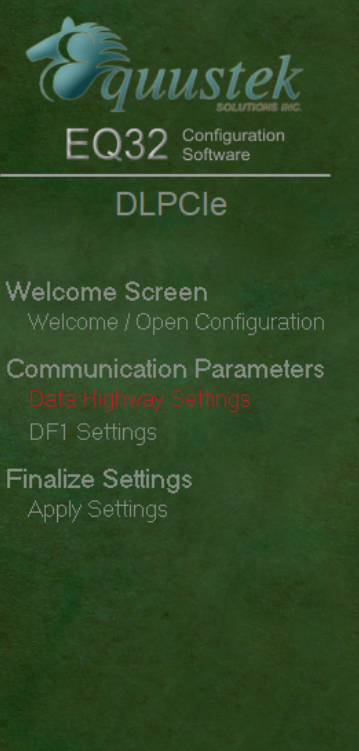
**DH485 Parameters**

Node Address  Decimal

Network Speed  kBaud

Select a Node address from the drop menu of node address.

Configure Online Parameters



### DH+ Communication Settings

**Network Mode**

DH+  DH485

**DH485 Parameters**

Node Address  Decimal

Network Speed  kBaud

Select DH485 network Speed (baud rate).

Configure Online Parameters

**quustek**  
SOLUTIONS INC.  
EQ32 Configuration Software  
DLPCle

Welcome Screen  
Welcome / Open Configuration

Communication Parameters  
Data Highway Settings  
DF1 Settings

Finalize Settings  
Apply Settings

### DH+ Communication Settings

Network Mode  
 DH+  DH485

DH485 Parameters

Node Address  Decimal

Network Speed  kBaud

4800  
9600  
19.2

Upload Settings Back Next Cancel

Click on Next.

Configure Online Parameters

**quustek**  
SOLUTIONS INC.  
EQ32 Configuration Software  
DLPCle

Welcome Screen  
Welcome / Open Configuration

Communication Parameters  
Data Highway Settings  
DF1 Settings

Finalize Settings  
Apply Settings

### DH+ Communication Settings

Network Mode  
 DH+  DH485

DH485 Parameters

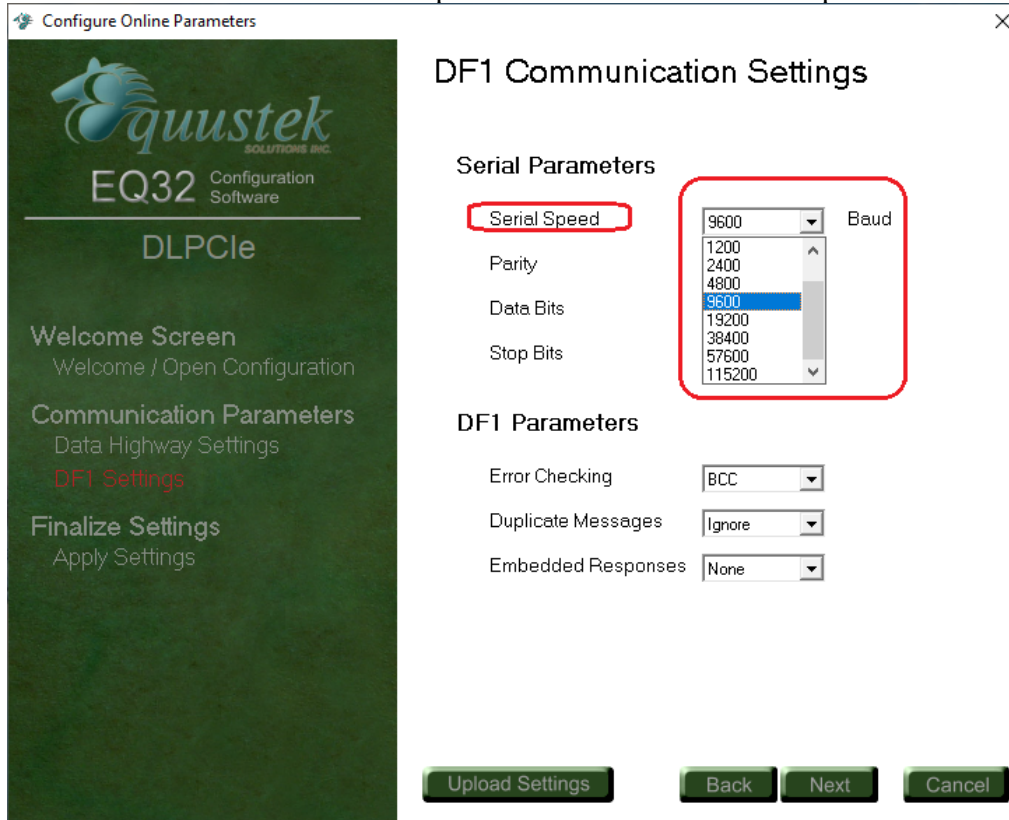
Node Address  Decimal

Network Speed  kBaud

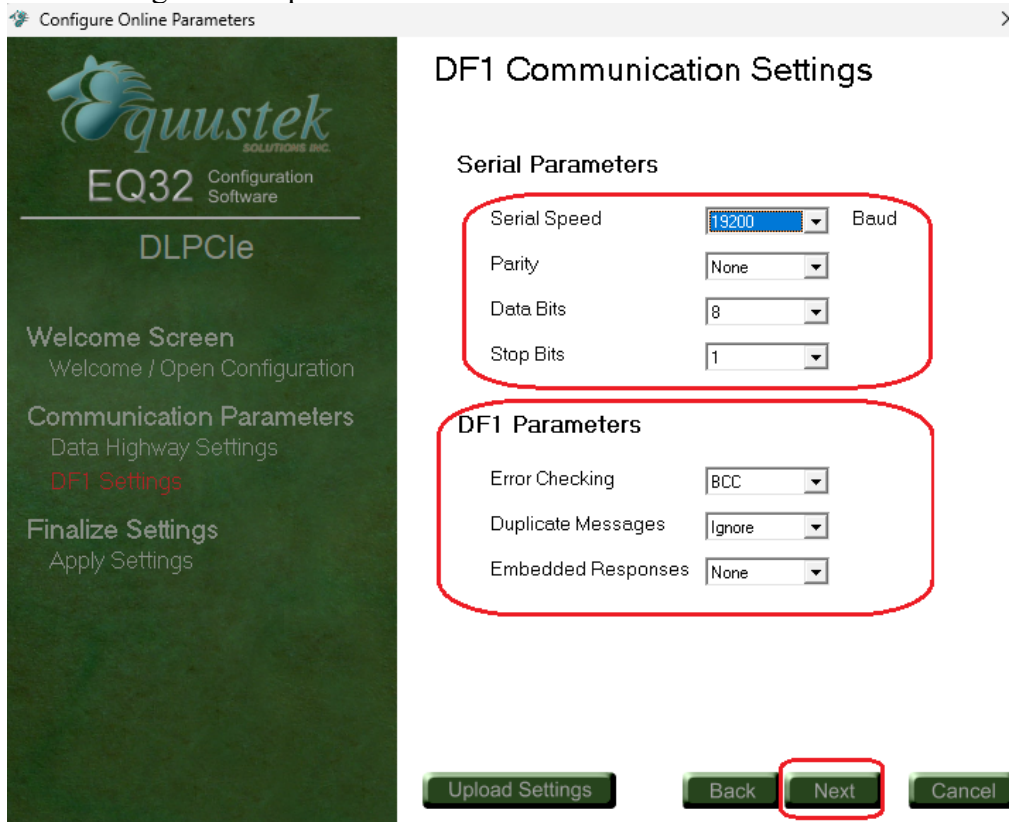
4800  
9600  
19.2

Upload Settings Back Next Cancel

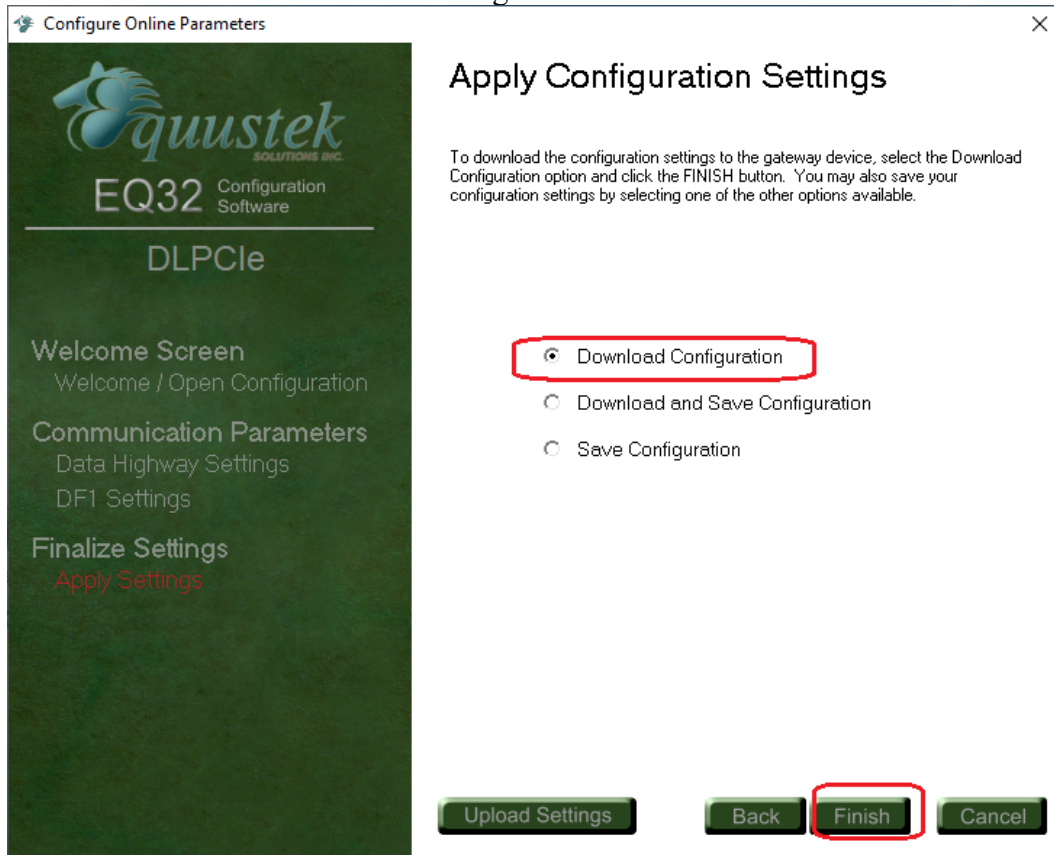
Set the emulated DF1 serial bus speed and all of the DF1 serial parameters settings.



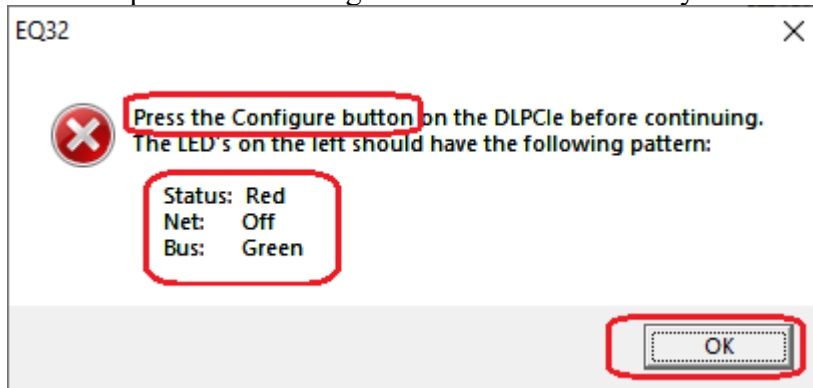
After setting the DF1 parameters click on Next.



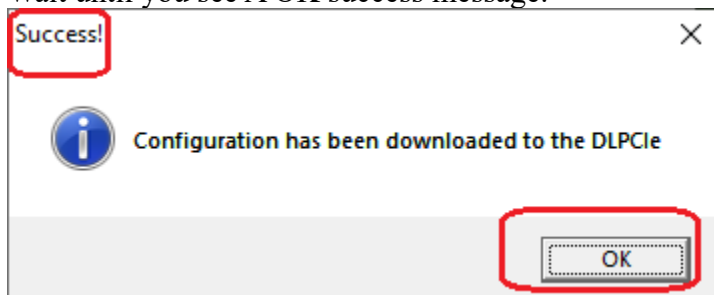
Click on Finish to download the configuration.



Press the pushbutton configure switch on the card if you have not done that yet and click on ok.



Wait until you see A OK success message.



This completes the DLPCI/104 DF1 to DH485 card configuration, close the program and restart the PC.