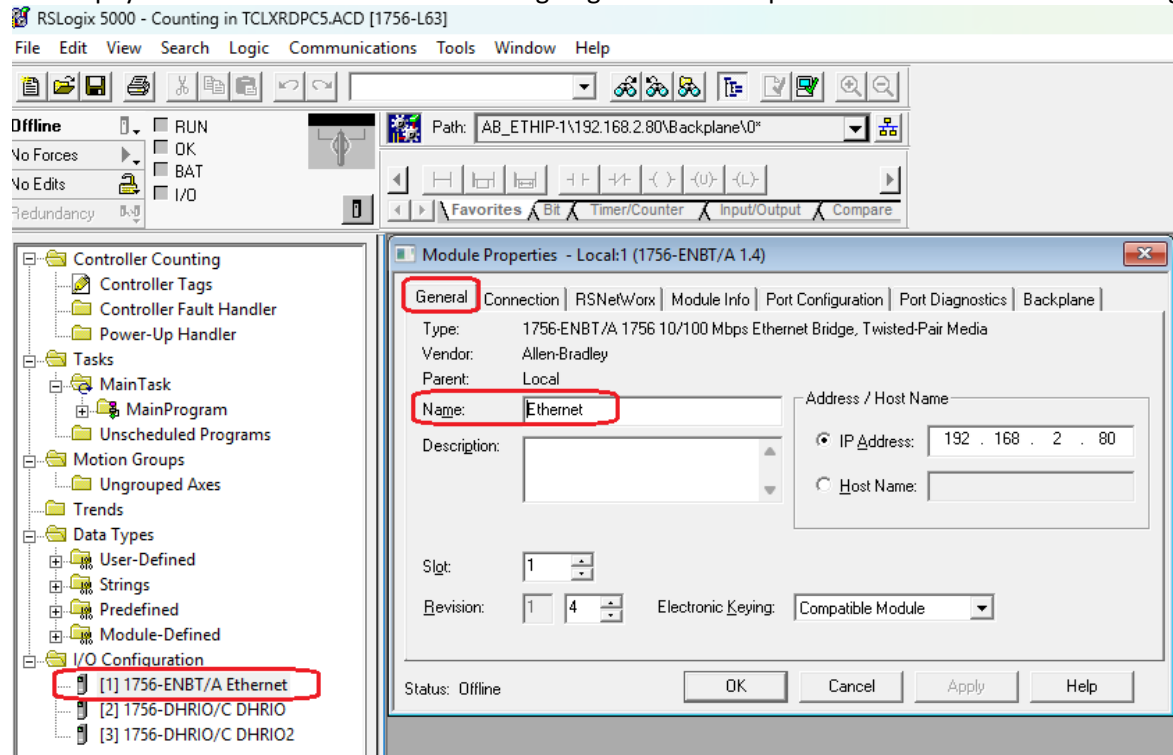


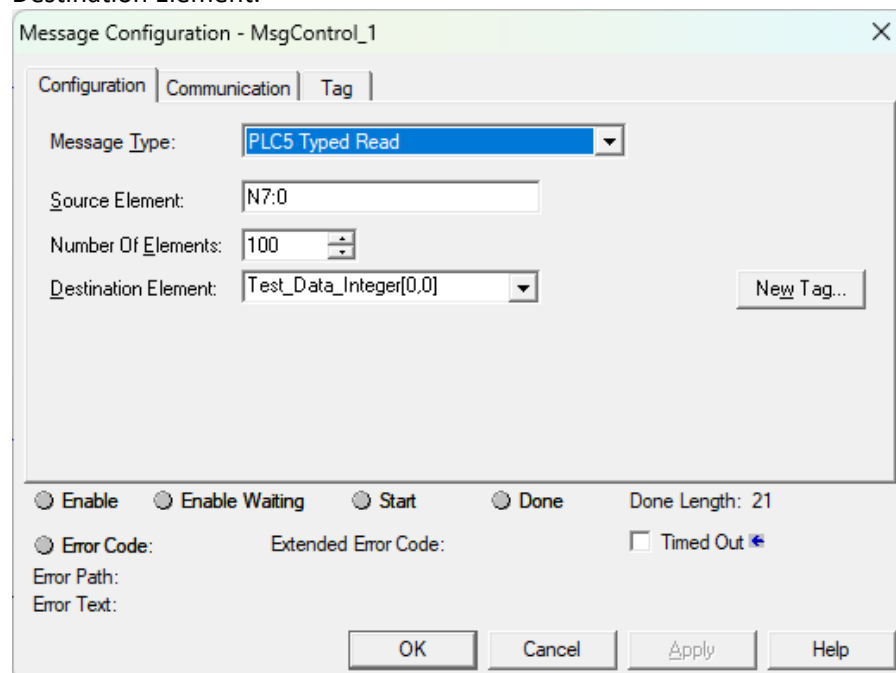
Control Logix Ethernet Module Reads data from PLC5 using EQ7000

Ethernet Module Name of the Control Logix and it's IP address in RSLOGIX 5000.

Please pay attention to that name since it is going to be used in path of the read command message.



PLC5 Typed Read Unconnected Message from Control Logix Configuration Tab, to read 100 words from Integer file N7 of the PLC5 starting at word 0 to be read into Control Logix tag named here under Destination Element.



Description under Communication tab in PLC5 Typed Read Unconnected Message from Control Logix.

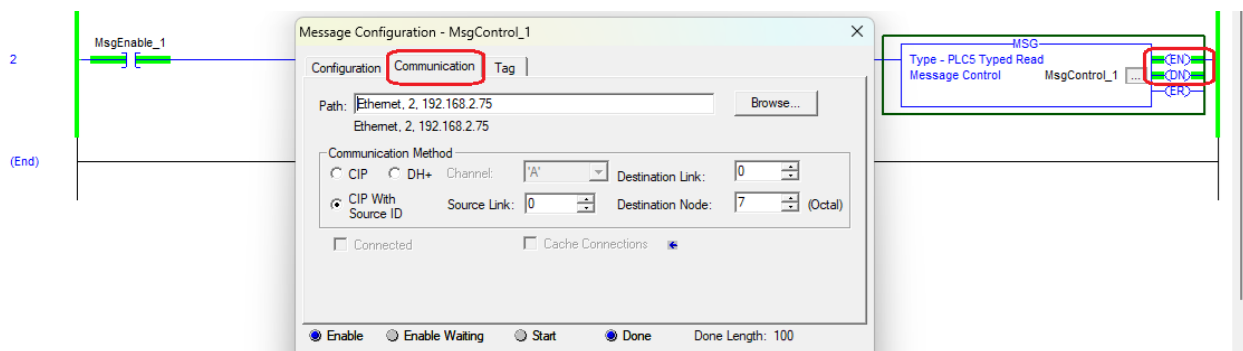
Ethernet is the Module name from the 1st screen shot of the RSLOGIX5000, (that can be any name that you have for your Control Logix Ethernet 1756 ENET Module.

2 is for Ethernet IP

192.168.2.75 is for the EQ7000 IP address

7 is the PLC5 node address.

The screenshot shows the 'Message Configuration - MsgControl_1' dialog box with the 'Configuration' tab selected. The 'Path' field is set to 'Ethernet, 2, 192.168.2.75'. The 'Communication Method' section has 'CIP With Source ID' selected. The 'Channel' is set to 'A', 'Destination Link' is '0', and 'Destination Node' is '7 (Octal)'. There are checkboxes for 'Connected' and 'Cache Connections'. At the bottom, there are radio buttons for 'Enable', 'Enable Waiting', 'Start', and 'Done', with 'Done' being selected. The 'Done Length' is set to '21'. There are also fields for 'Error Code', 'Extended Error Code', 'Error Path', and 'Error Text', and a 'Timed Out' checkbox.



Integer file 7 data from PLC5 monitored by RSLINX we can see the same values read in Control Logix.

PLC-5/80E (6): Data File N7

	0	1	2	3	4	5	6	7	8	9
N7:0	387	774	1161	387	387	387	387	387	387	387
N7:10	387	387	387	387	387	387	387	387	387	387
N7:20	387	387	387	387	387	387	387	387	387	387
N7:30	3355	12345	4567	0	0	0	0	0	0	0
N7:40	0	0	0	0	0	0	0	0	0	0
N7:50	1551	3102	4653	0	0	0	0	0	0	0
N7:60	0	0	0	0	0	0	0	0	0	0
N7:70	0	0	0	0	0	0	0	0	0	0
N7:80	0	0	0	0	0	0	0	0	0	0

Status: Active Selection: N7:0

Here are the same data in Control Logix after the read command is done.

[illegible]