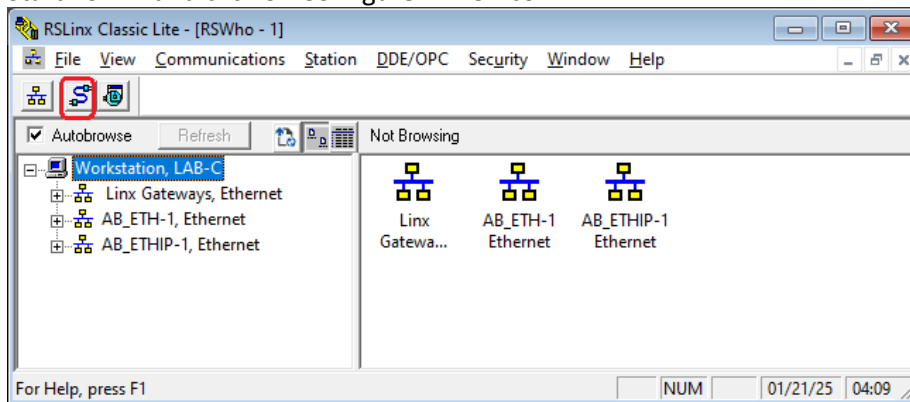


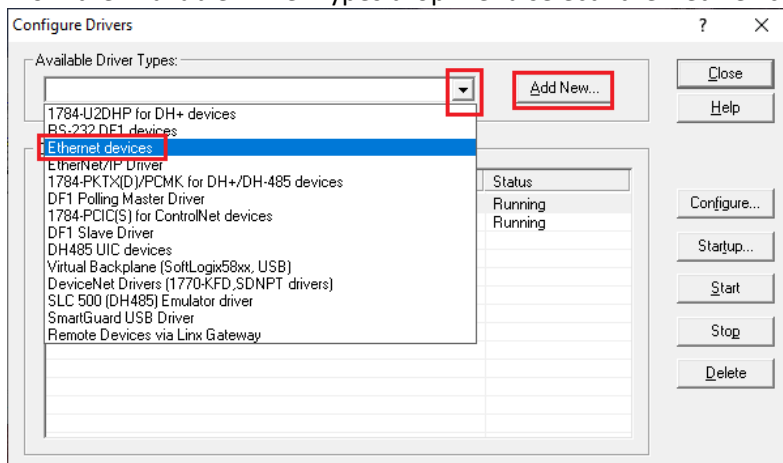
FactoryTalk monitoring Data in PLC5 & SLC504 on DH+ using AB Ethernet Driver with Equustek EQ7000



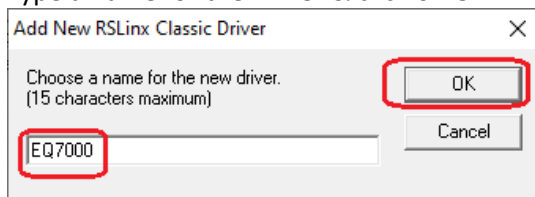
Start RSLinx and click on Configure Driver Icon.



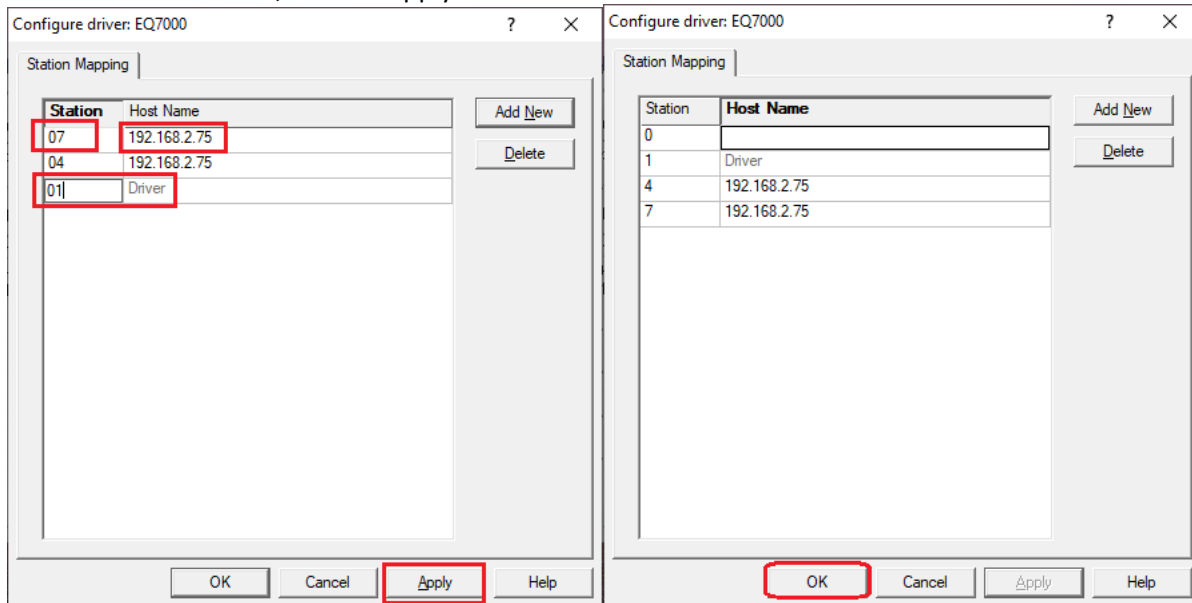
From the Available Driver Types drop menu select Ethernet Devices & click on Add New.



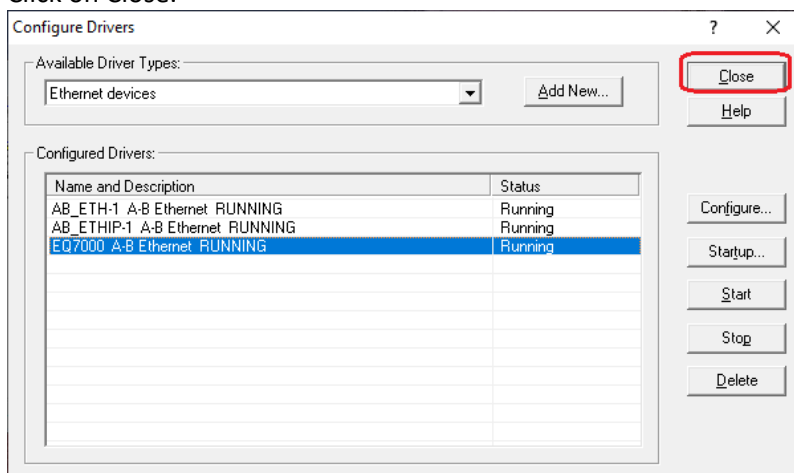
Type a name for the Driver & click on OK.



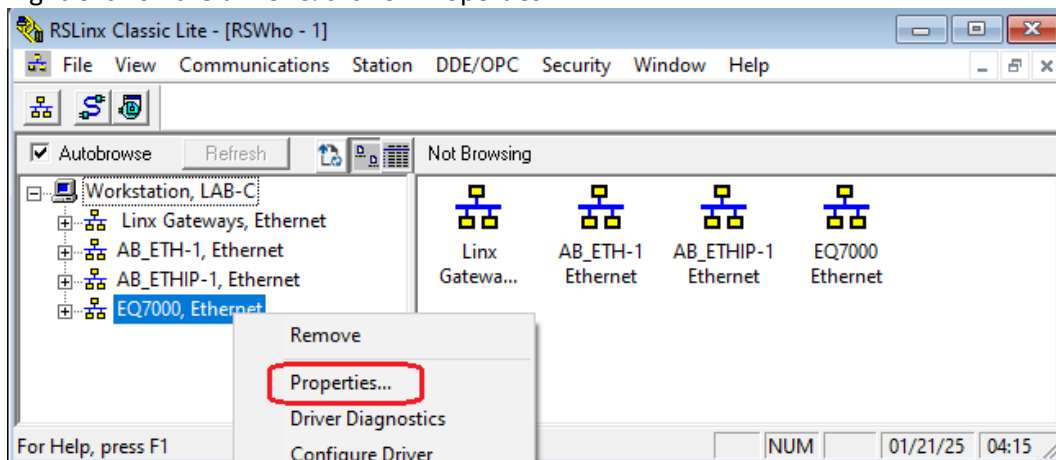
Under Station enter the node address numbers of the DH+ PLCs here we have PLC5 node 7 & SLC5/04 node 4 as for driver enter the node address number of the EQ7000, under Host name enter the IP address of the EQ7000, click on Apply & then on OK.



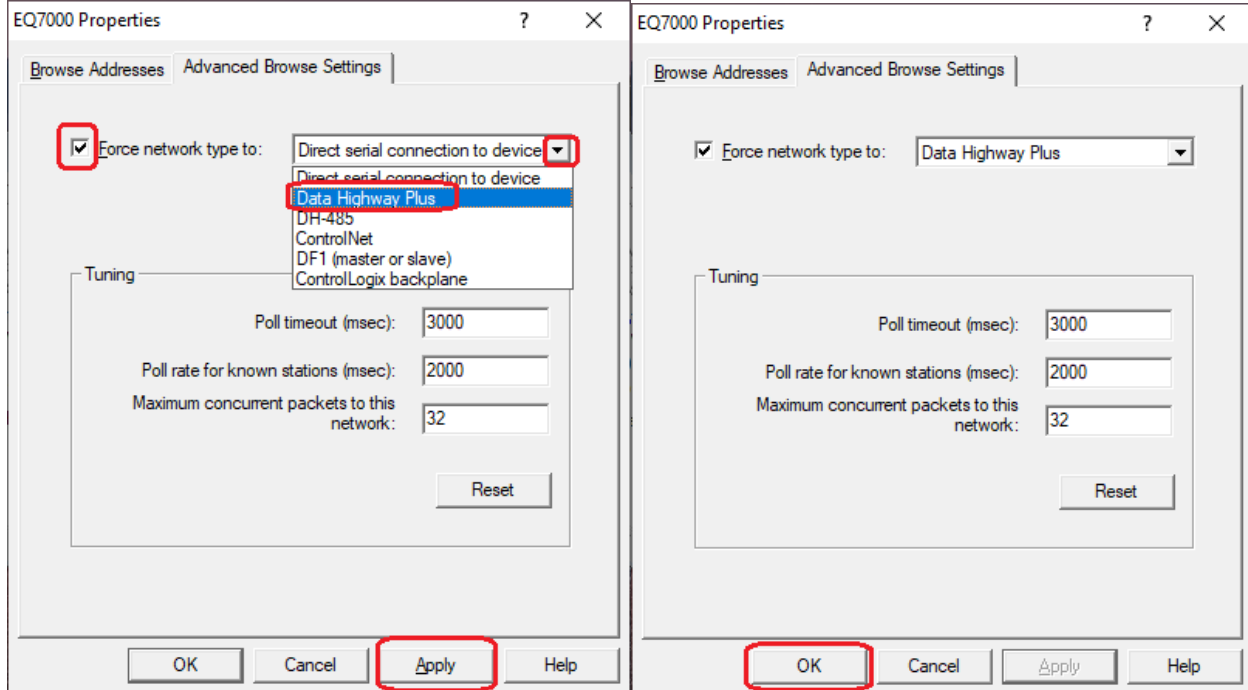
Click on Close.



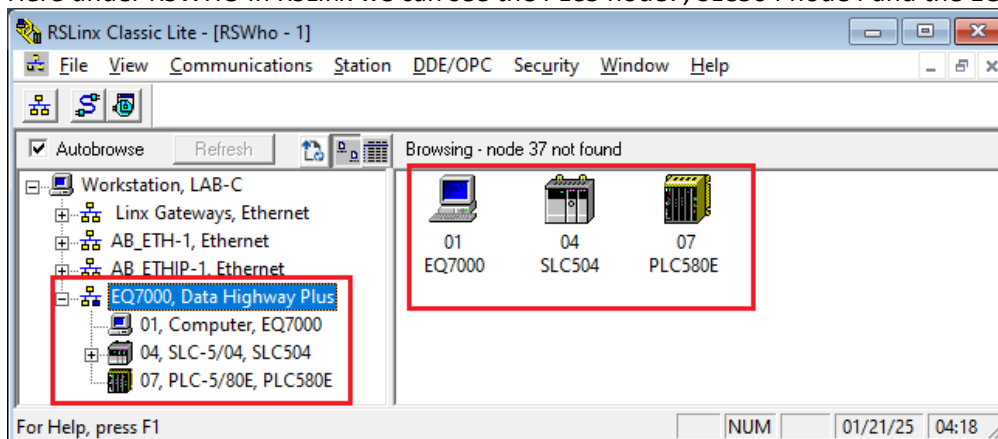
Right Click on the driver & click on Properties.



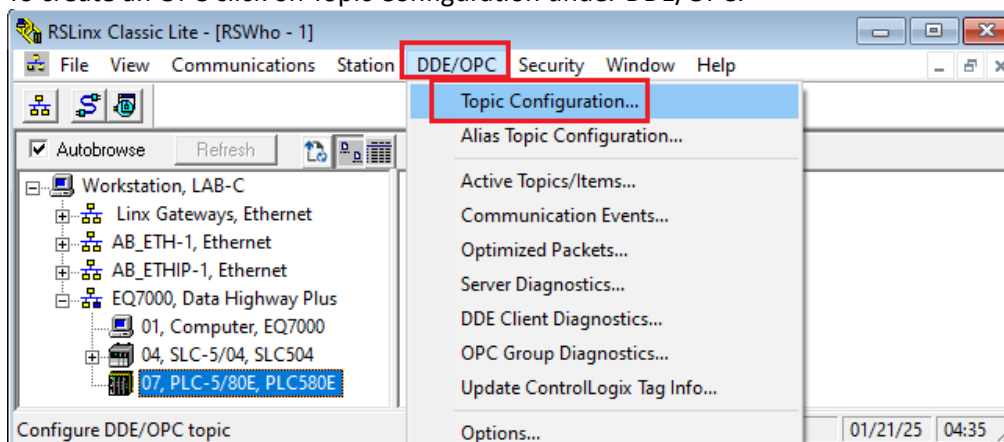
On Advanced Browse Setting Check Mark Force network type, from the drop menu select Data Highway Plus then click on Apply & OK.



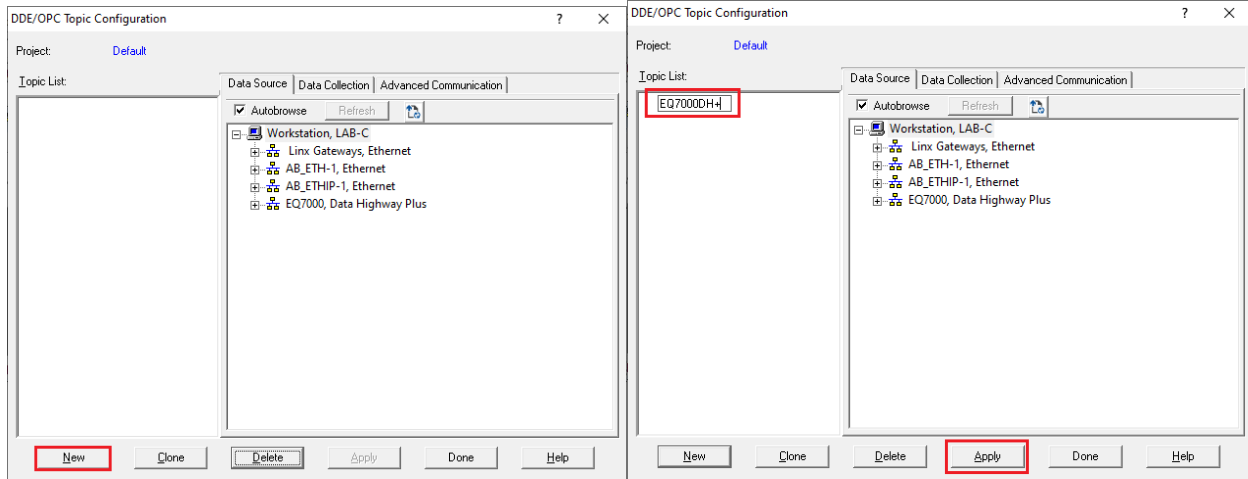
Here under RSWHO in RSLinx we can see the PLC5 node7, SLC504 node4 and the EQ7000 as station 1.



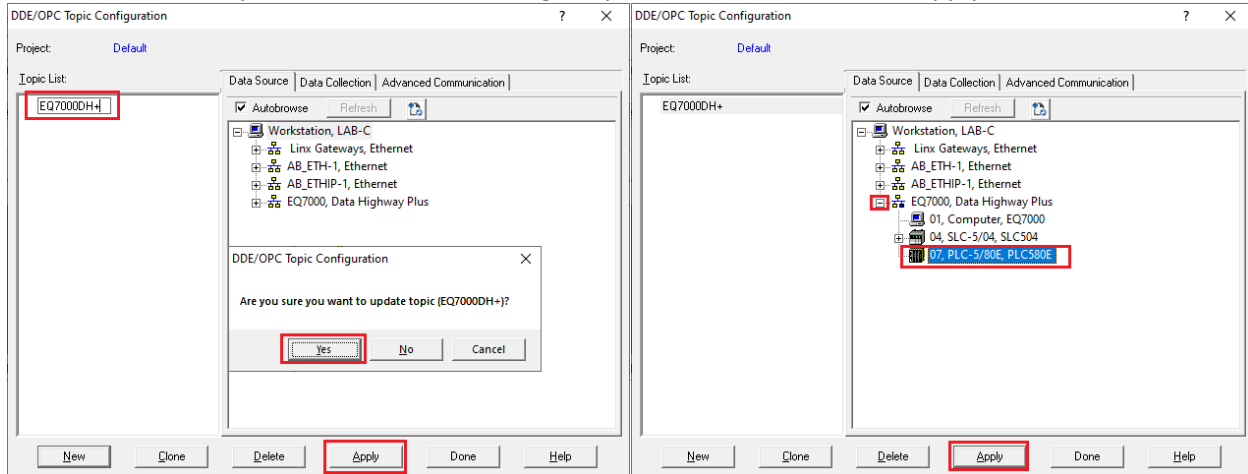
To create an OPC click on Topic Configuration under DDE/OPC.



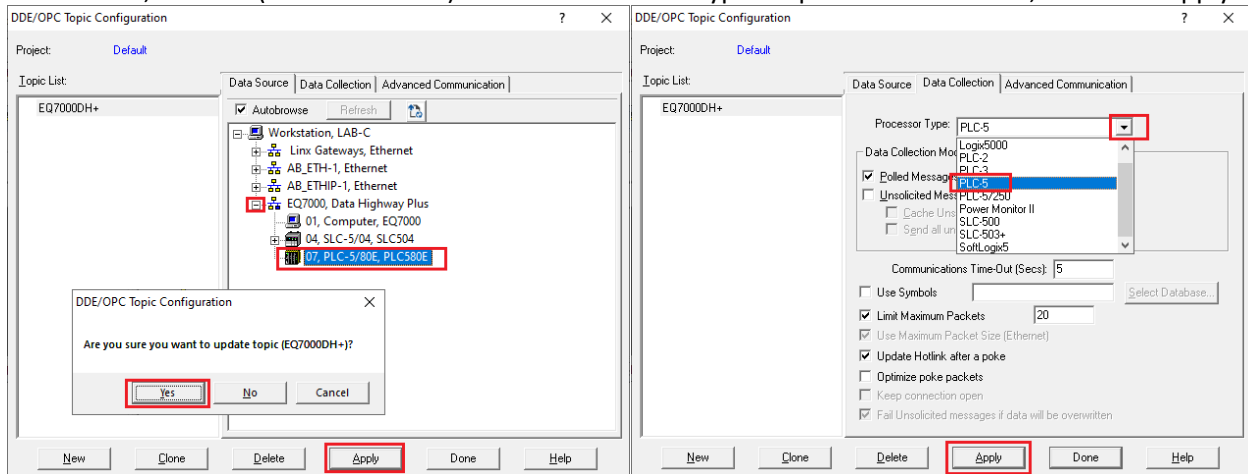
Click on New, type a name for the Topic then click on Apply.



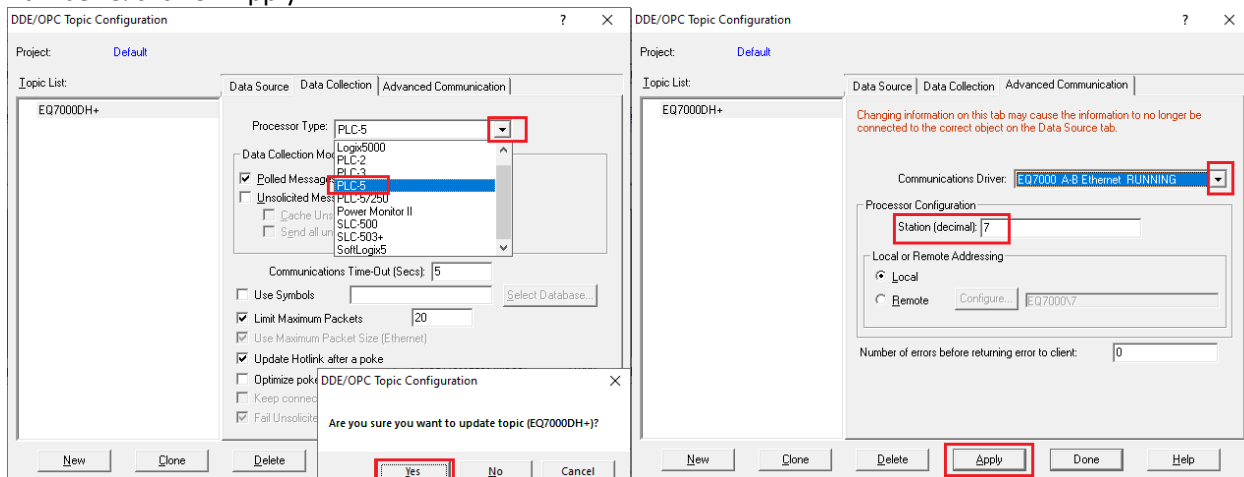
Click on Yes then expand the EQ7000 Data Highway Plus Driver then click on Apply.



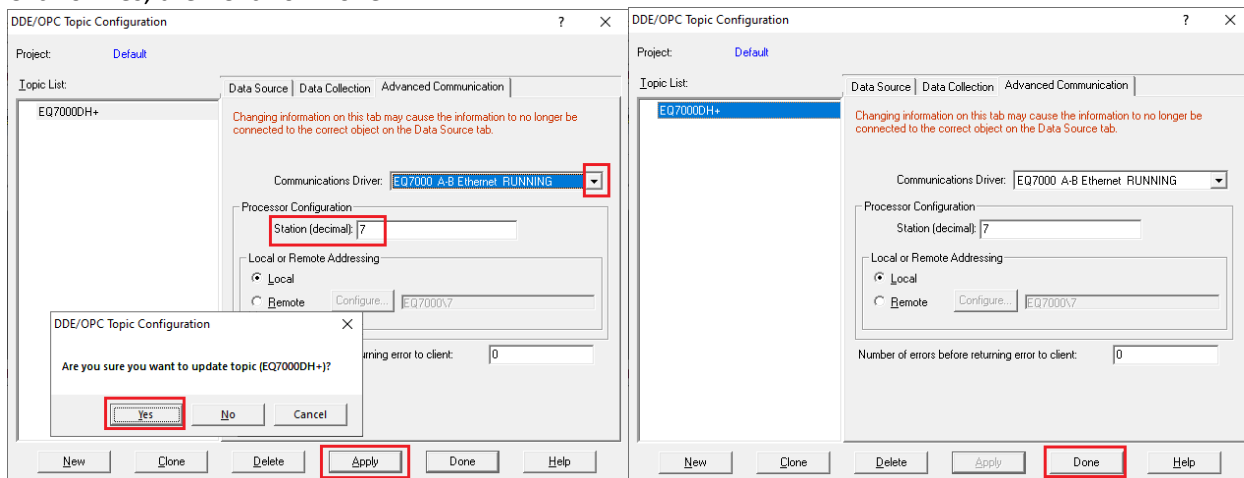
Click on Yes, then on (Data Collection) tab from Processor Type drop menu select PLC5, then click Apply.



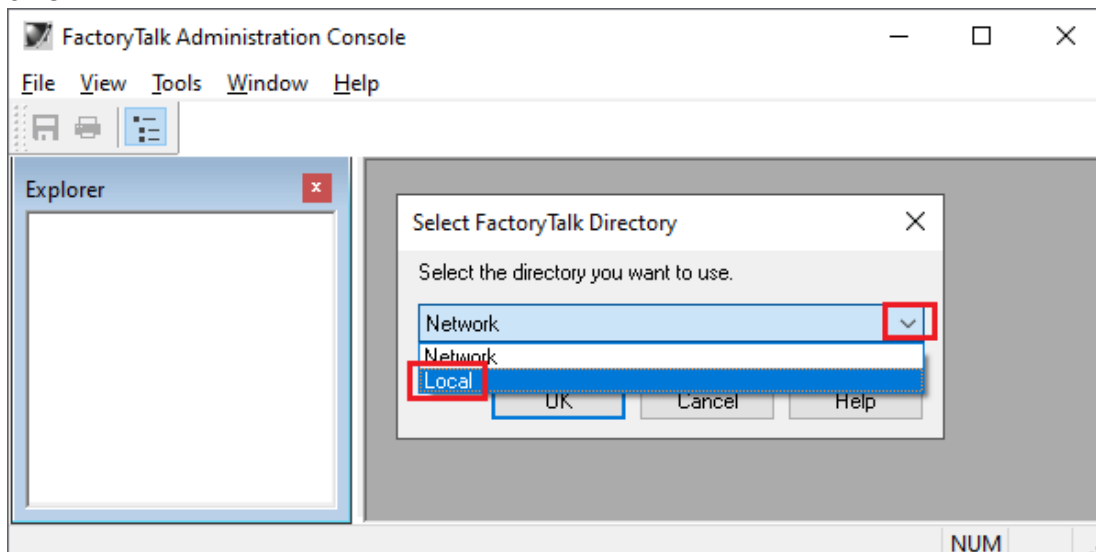
Click on Yes, then under (Advanced Communication) Tab, select the Communication Driver that was created in RSLinx from the Communications Driver drop menu, then enter the PLC5 node address number & click on Apply.



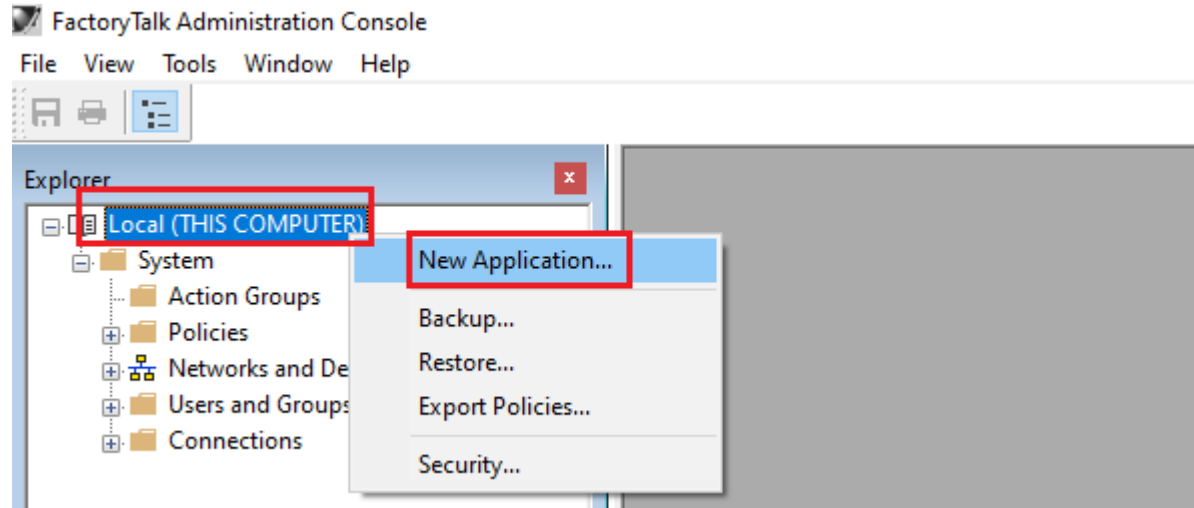
Click on Yes, then Click on Done.



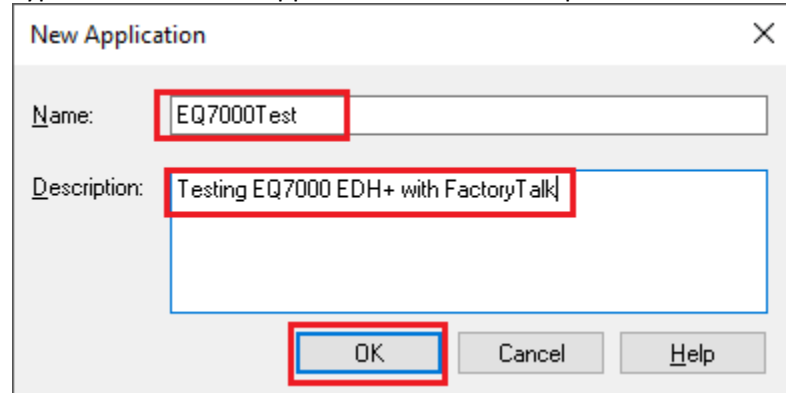
Start FactoryTalk Administration Console & Select the Directory to use, here we selected Local, then Click on OK.



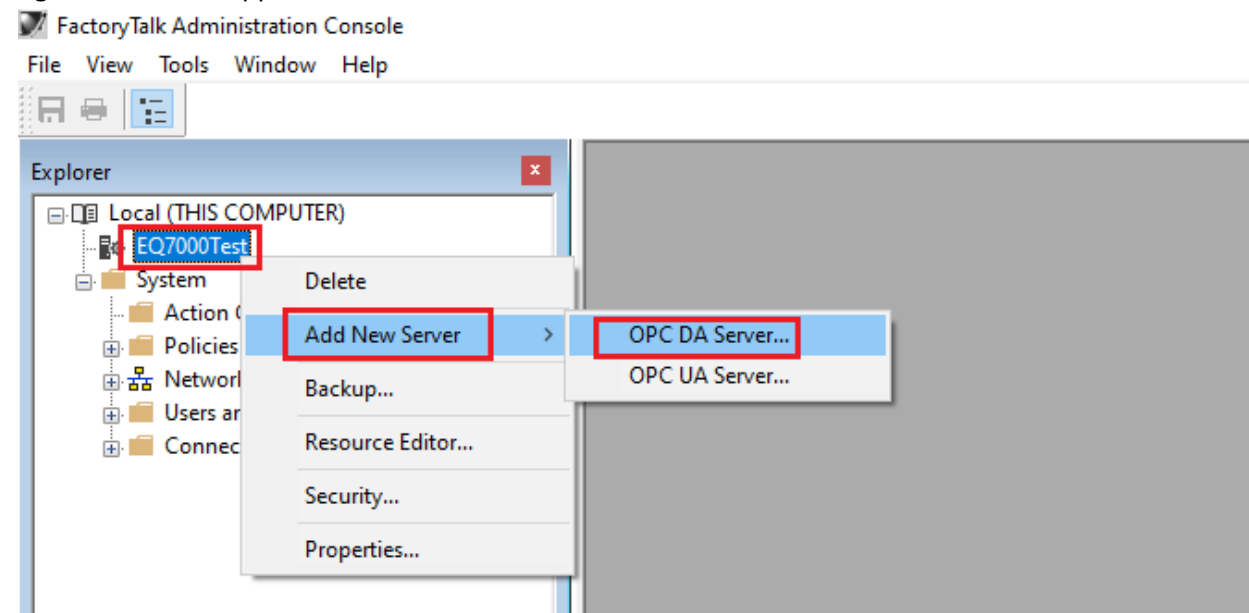
Right Click on Local This Computer and select New Application.



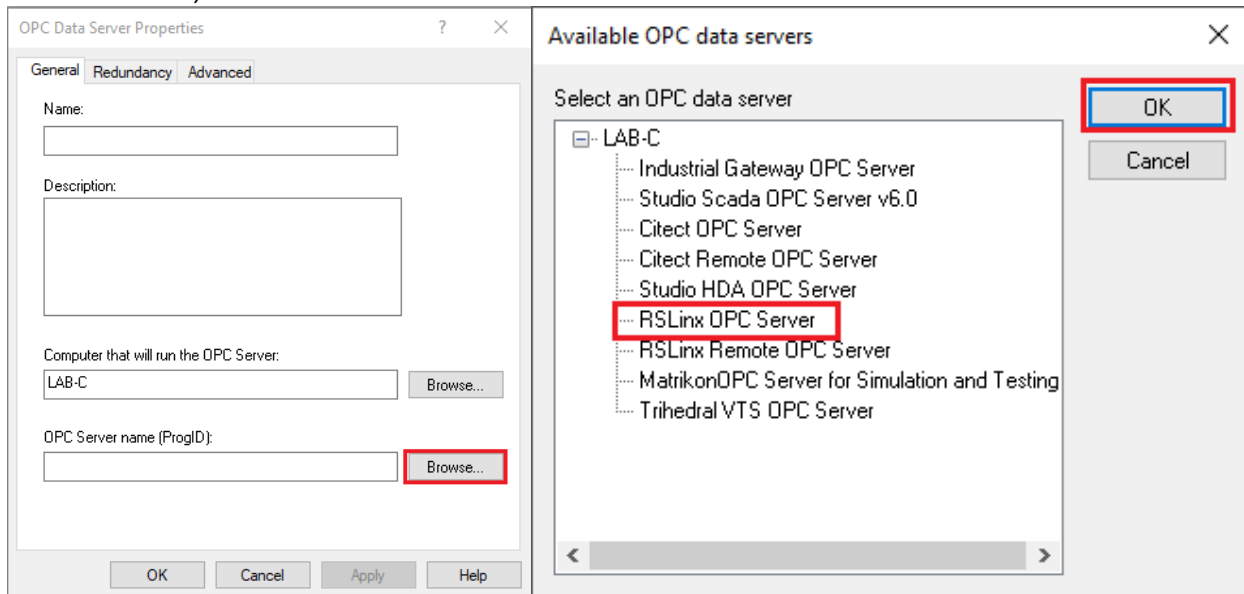
Type a Name for the Application and it's description then click on OK.



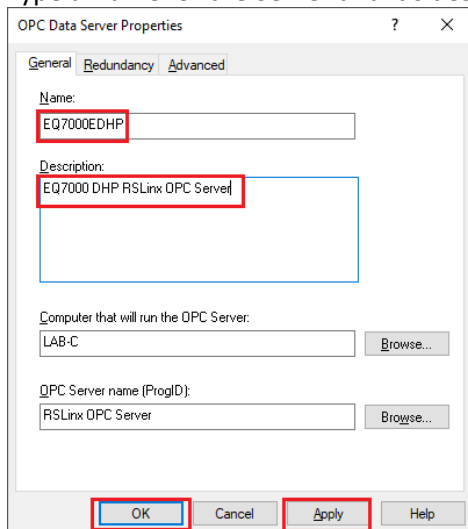
Right Click on the App created the click Add New Server to add OPC DAServer.



Click on Browse, in Available OPC data servers Select RSLinx OPC Server & click on OK.



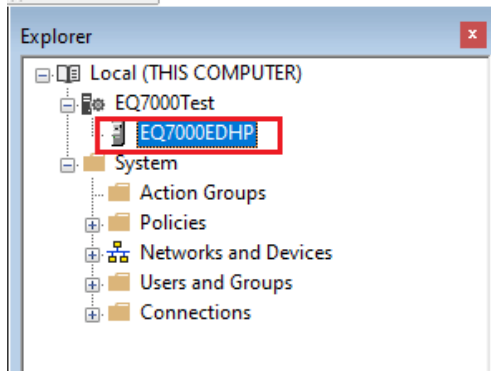
Type a Name for the Server and it's description & click on Apply then click on OK.



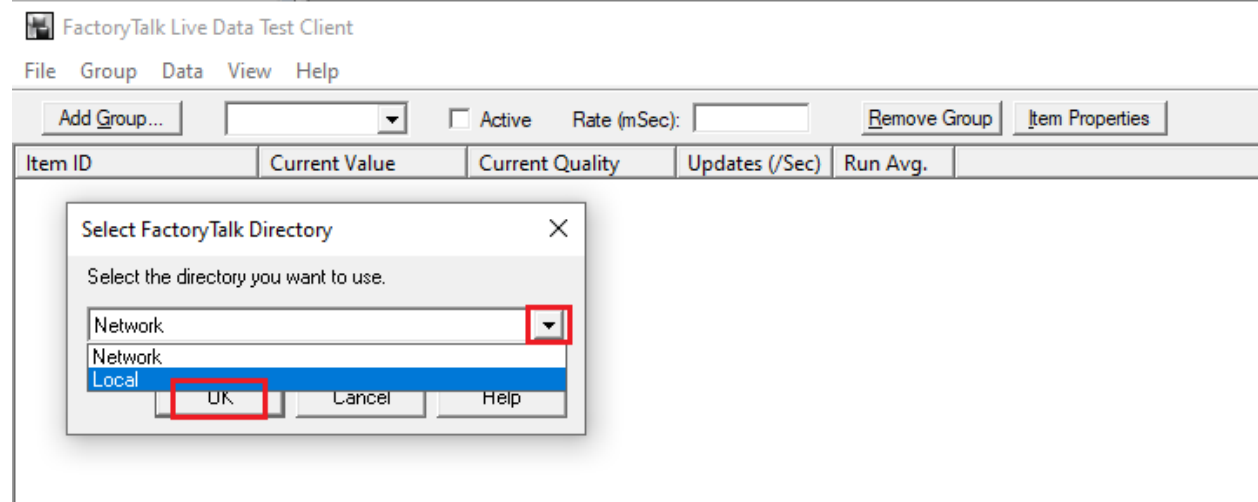
This completes adding the OPC Server to FactoryTalk.

FactoryTalk Administration Console

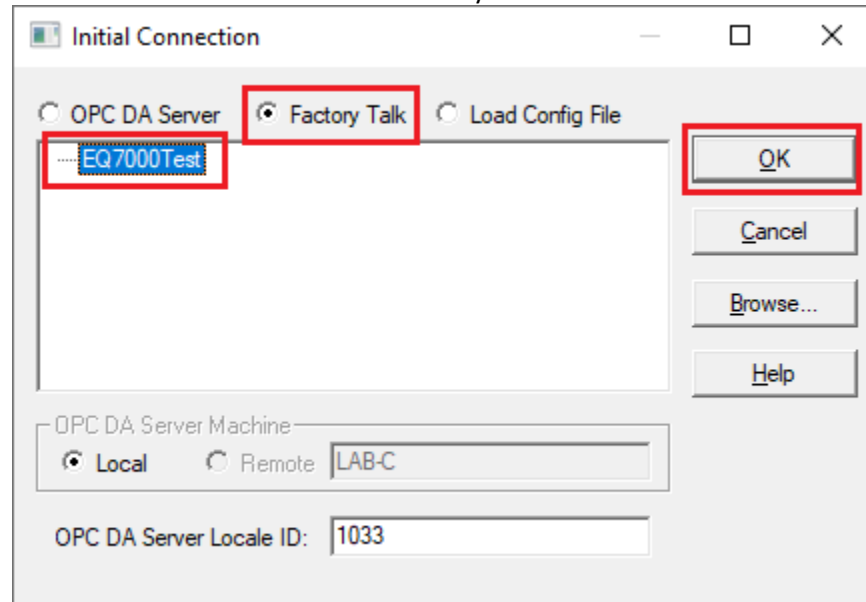
File View Tools Window Help



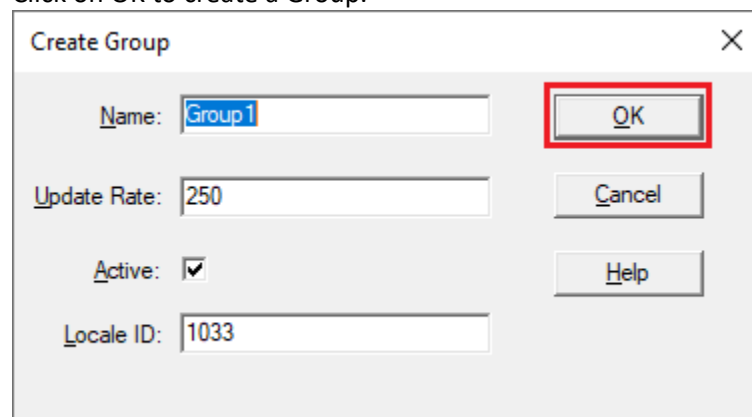
To monitor data from the PLC5 open (FactoryTalk Live Data Test Client) select the directory & click on OK.



Select the server and make sure Factory Talk is selected then click on OK.

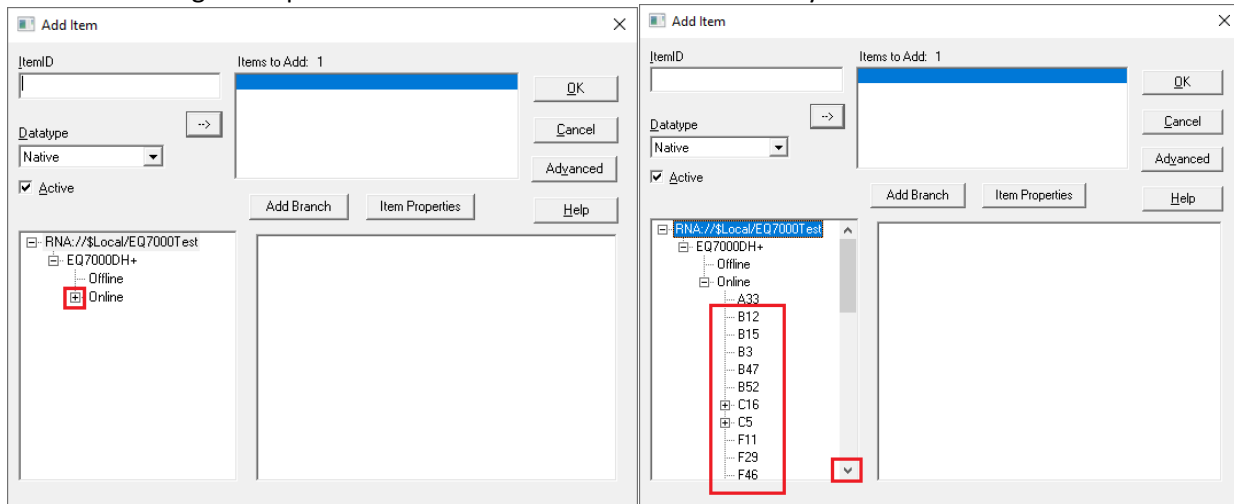


Click on OK to create a Group.

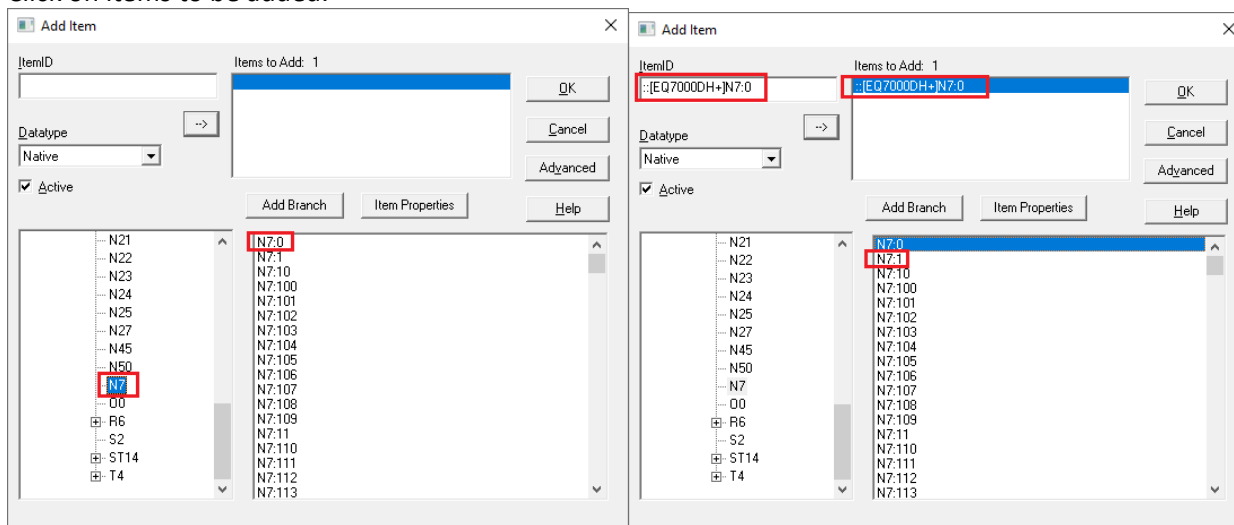




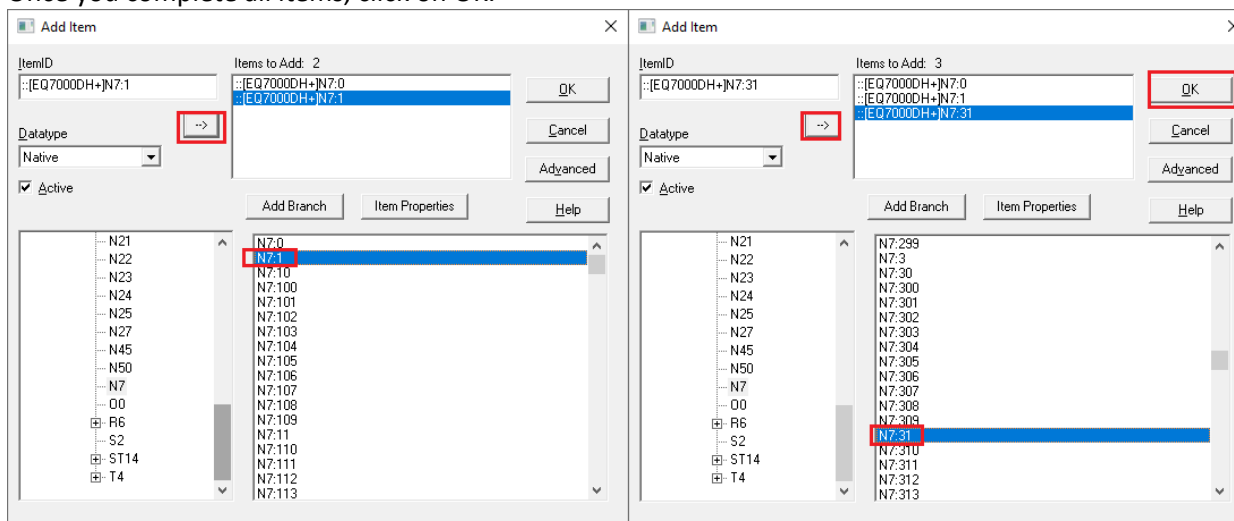
Click on the + sign to expand the online then scroll down to the file you want to read from.



Click on items to be added.



Once you complete all items, click on OK.



In a similar way we can add the SLC5/04 if needed.

File View Tools Window Help

[illegible]